

Finishes

Nowy Styl Group



ELCOND
ENGINEERING

PISARNIŠKO POHIŠTVO

www.elcond.si

01/583 73 73



Table of contents

0	Basic Fabric	14	Finishes for Denuo	72
	Imitation Leather	16	Mesh	76
	Micro	18	Elasto-net	88
	Oban	20	Felt	89
	Polyester 4510	22	Plastic	90
1	Bondai	24	Laminate for chairs	94
	Era	26	Veneer for chairs	95
	Erika	28	Wood	96
	Kaiman	30	Enamels	98
	Lucia	32	Veneer for furniture	99
	Oflum	34	Melamine	100
	Sempre / Sempre Melange	36	Melamine for table tops	102
			Cellular board	102
2	Felicity	38	Laminate for furniture	104
	Hush	40	Laser edge ABS	105
	Mafra	42	Lacquered MDF	105
	Radio	44	Topalit® table tops	106
	Valencia	46	Linoleum for table tops	107
	Xtreme	48	Metal	108
			Glass	110
3	Runner	50		
	Silvertex	52		
	Split Leather	54		
	Step / Step Melange	56		
4	Blazer	58		
	Fame	60		
	Hi-Tech	62		
	Synergy	64		
	24/7 Flax	66		
4	5	Fine Leather	68	
6	Nappa Leather	70		



Colours are emotions

The colours in the office should match the image of the company and its employees as well as the specifics of performed tasks. Well chosen colours can influence the employees' moods, stimulate their creativity and be the perfect background for effective work and communication. The finishes in our new sample book have been selected, taking into account the current colour and fabric trends. Finishes are not only about colours, but an all-embracing experience of the texture, shape and tone which involves the two senses: sight and touch.
Get inspired by our moodboards.

Kolory to emocje

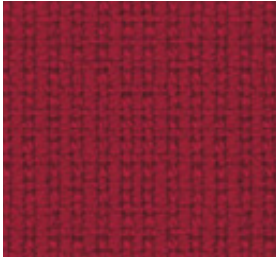
Kolory w biurze powinny być dopasowane do wizerunku firmy i jej pracowników oraz specyfiki wykonywanych zadań. Odpowiednio dobrana kolorystyka może wpływać na nastrój pracowników, pobudzać ich kreatywność, być idealnym tłem do efektywnej pracy i komunikacji. Wykończenia w naszym nowym wzorniku zostały wybrane z uwzględnieniem trendów kolorystycznych i materiałowych. Wykończenia to nie tylko kolory, to całościowe doświadczenie faktury, kształtu, tekstury i barw, angażujące dwa zmysły: wzrok i dotyk. Zainspiruj się naszymi moodboardami.

Farben und emotionen

Die Farbvielfalt eines Unternehmens ist meist an das Corporate Design geknüpft und passt sich idealerweise im direkten Arbeitsumfeld den Mitarbeitern und deren auszuführender Aufgaben an. Eine entsprechend abgestimmte Koloristik kann die Stimmung der Mitarbeiter positiv beeinflussen, Kreativität wecken und als ideale Basis für eine möglichst effiziente Arbeitsweise und Kommunikation dienen. Gezeigte Stoffe und Oberflächen in dieser Finishes Collection wurden unter Berücksichtigung aktueller Trends ausgewählt und zeigen neben Farben auch Strukturen, Formen, Texturen und Töne, um beide Sinne anzusprechen: unseren Tast- und Sehsinn. Lassen Sie sich von folgenden Moodboards inspirieren.

Les couleurs sont des emotions

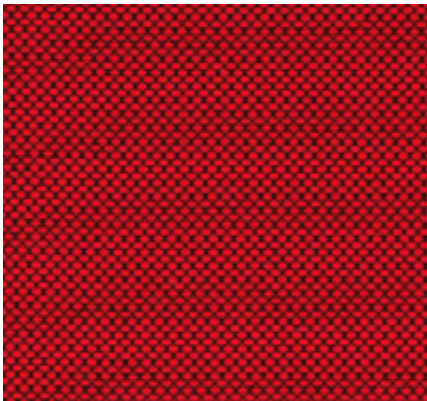
Les couleurs dans un bureau devraient être adaptées à l'image de l'entreprise, à ses employés et à la spécificité des tâches réalisées. Les coloris bien choisis peuvent influencer l'humeur des employés, éveiller leur créativité, et former un arrière-plan parfait pour le travail et la communication efficaces. Les finitions de notre nouveau nuancier ont été sélectionnés en tenant compte des tendances dans la matière de couleurs et matériaux. Les finitions ne sont pas uniquement des couleurs ; c'est un ensemble de sensations de factures, formes, textures et teintes, impliquant deux sens : la vue et le toucher. Laissez-vous inspirer par nos moodboards.



Fame F18



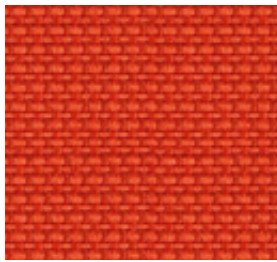
Blazer CUZ63



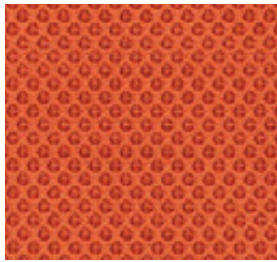
Radio RDXF4528



Synergy LDS75



Sempre SM09

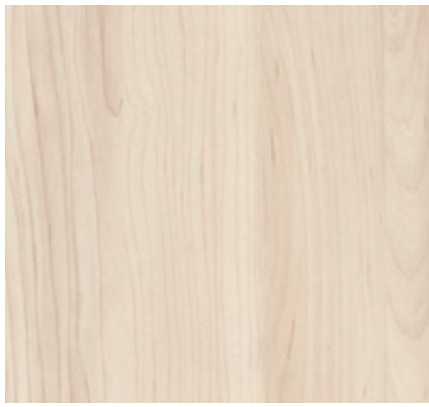


Runner RN63034

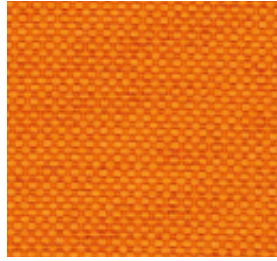


Topalit® W.011 Red Beech





Melamine NC Champagne Hard Maple



Radio RDF3082



Erika ERF4030



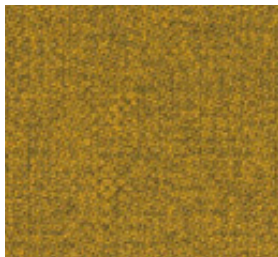
Synergy LDS44



Micro M15



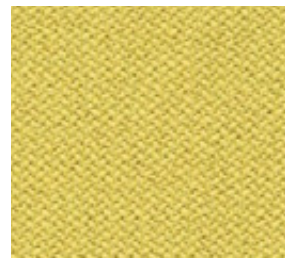
Blazer CUZ82



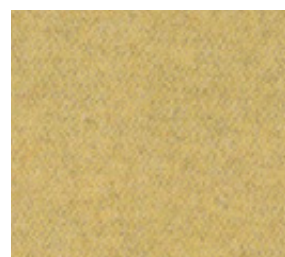
Step Melange STMG62057



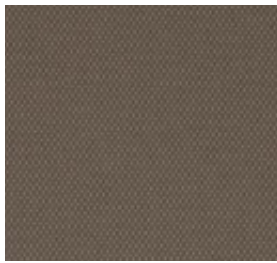
Ofium OL09



Era CSE03



Synergy LDS45



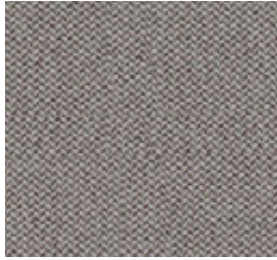
Felicity FLG61165



Erika ERF2005



Step Melange STMG61103



Era CSE02



Blazer CUZ67



Oban EF002



Erika ERF8033



Era CSE21



Hush HG60155



Lucia YB038



Oflum OL02



Blazer CUZ2Q



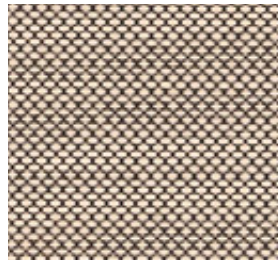
Runner RN60061



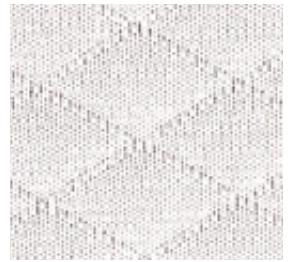
Era CSE01



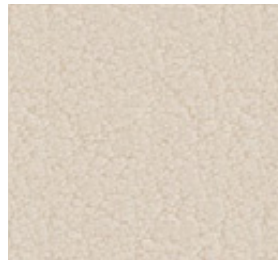
Radio RDF1008



Radio RDXF1510



3D pattern fabric MDP02/FDP02



Valencia VL1048



Laminate H1733 Mainau Birch



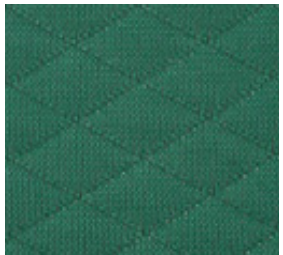
Runner RN66140



Blazer CUZ3B



Oflum OL03



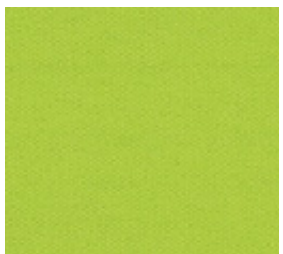
3D pattern fabric MDPO5/FDPO5



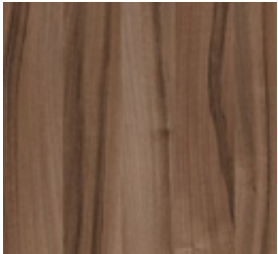
Mesh MD05



Lucia YB200



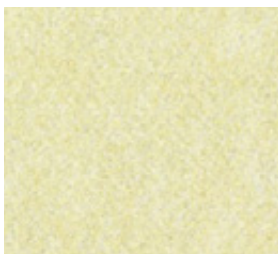
Era CSE07



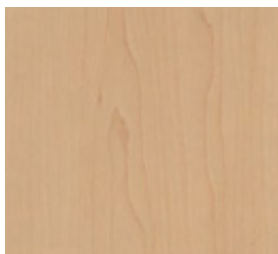
Melamine NP Tiepolo Nut



Erika ERF7011



Hush HG68102



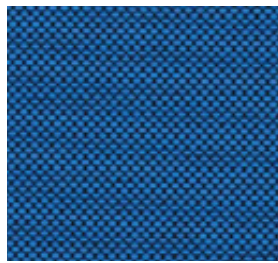
Melamine NH Maple



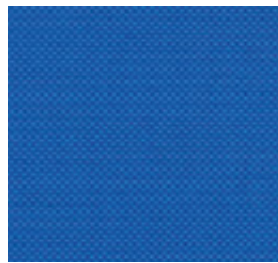
Synergy LDS63



Silvertex SX3007



Radio RDXF6575



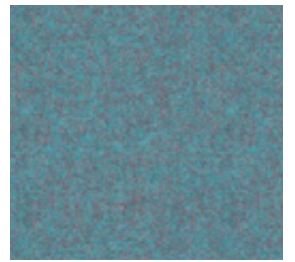
Radio RDF6075



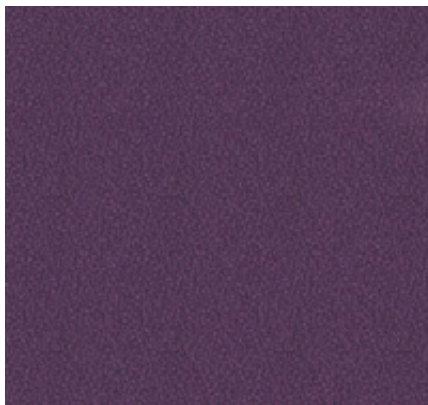
Era CSE10



Hush HG67046



Synergy LDS56



Lucia YB090



Hush HG65077



Synergy LDS07



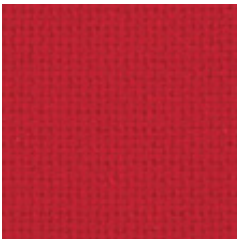
EN Range of finishes for each product line available at www.NowyStyl.com
PL Dedykowana paleta wykończeń dla każdej linii produktowej dostępna na www.NowyStyl.com
DE Alle verfügbaren Stoffe und Oberflächen jeder Produktlinie finden Sie unter www.NowyStyl.com
FR Pour chaque ligne de produits, les gammes de finitions sont disponibles sur notre site www.NowyStyl.com

Exactly the same product may look different in so many ways. Have a look at the range of colours, patterns and textures. Discover new opportunities.

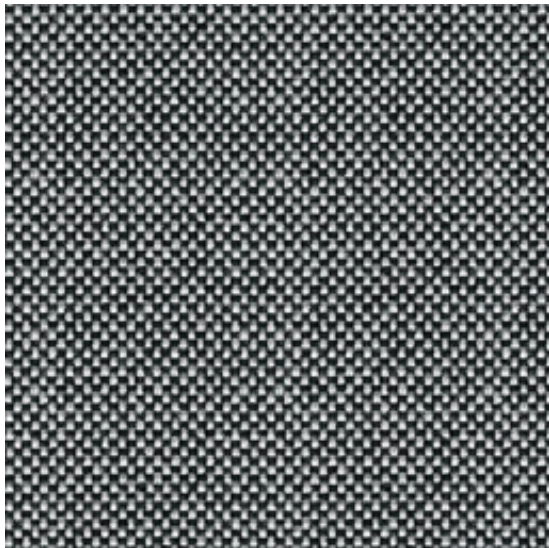
Ten sam produkt może wyglądać różnie na tak wiele sposobów. Zobacz wachlarz kolorów, wzorów i tekstur. Odkryj nowe możliwości.

Ein Produkt kann sich in vielerlei Hinsicht unterscheiden. Eine breite Auswahl an Farben, Dekoren und Texturen bietet viele neue Möglichkeiten.

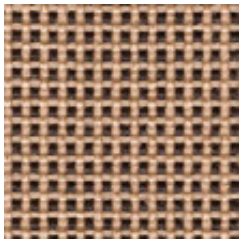
Le même produit peut avoir plusieurs aspect différents. La vaste gamme de coloris, dessins et textures vous permet de découvrir des nouvelles possibilités.



C2



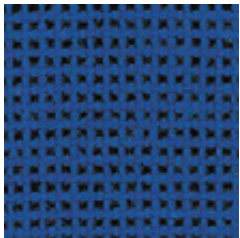
C73



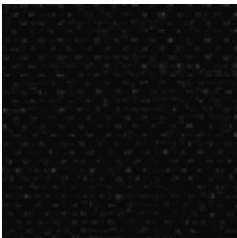
C4



C29



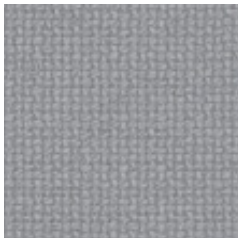
C14



C11




C38



C12



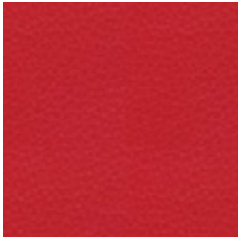
C6

Price group: Grupa cenowa: Preisgruppe: Groupe de prix :		
Composition: Skład: Material: Composition :	100%	polyester poliester Polyester polyester
Weight: Gramatura: Gewicht: Poids :	270 g/m ²	
Abrasion resistance: Odporność na ścieranie: Scheuerfestigkeit: Résistance à l'abrasion :	90 000	Martindale cycles cykli Martindale Touren Martindale cycles Martindales
Colour fastness to light: Odporność barwy na światło: Lichtechtheit: Résistance de la couleur à la lumière :	EN ISO 105-B02 (6-7)	
Colour fastness to rubbing: Odporność barwy na tarcie: Reibechtheit: Résistance de la couleur au frottement:	EN ISO 105-X12 (wet: 4-5 / dry: 4-5)	
Pilling: Odporność na pilling: Pilling: Résistance au boulochage :	EN ISO 12945-2 (4-5)	

Imitation Leather | V



V16N



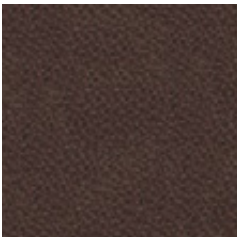
V79N



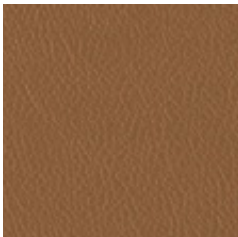
V83



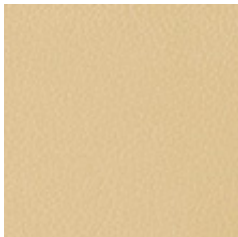
V26



V62



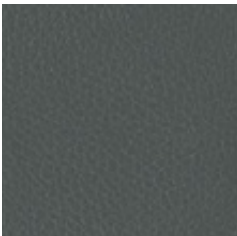
V49



V46



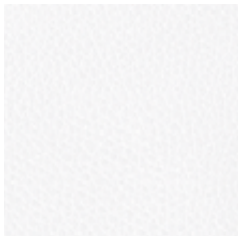
V18N



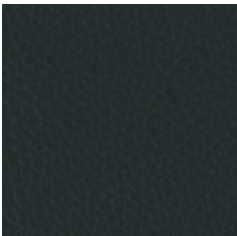
V02N



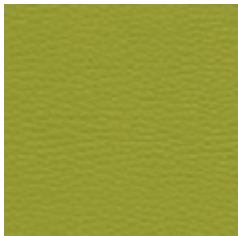
V28



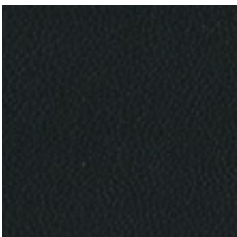
V01



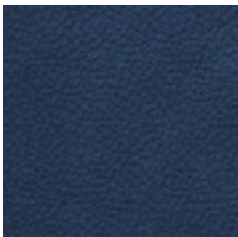
V04



V82




V14N

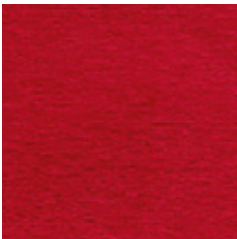


V53N



Imitation Leather | V

Price group: Grupa cenowa: Preisgruppe: Groupe de prix :		
Composition: Skład: Material: Composition :	100%	PVC coated polyester poliester pokryty warstwą PCV PVC-beschichtetes Polyestergewebe polyester enduit PVC
Weight: Gramatura: Gewicht: Poids :	460 g/m ²	
Abrasion resistance: Odporność na ścieranie: Scheuerfestigkeit: Résistance à l'abrasion :	>30 000	Martindale cycles cykli Martindale Touren Martindale cycles Martindales
Flammability: Trudnozapałność: Brandschutznormen: Résistance au feu :		EN 1021-1, EN 1021-2, BS 5852-1 applies to colours marked with N symbol dotyczy kolorów oznaczonych symbolem N gilt für Farben mit „N“- Kennzeichnung coloris marqués N sont non-inflammables
Other: Inne: Sonstiges: Autres :		easy to keep clean łatwy w utrzymaniu czystości einfach zu reinigen facile à nettoyer



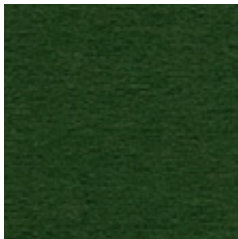
M04



M15



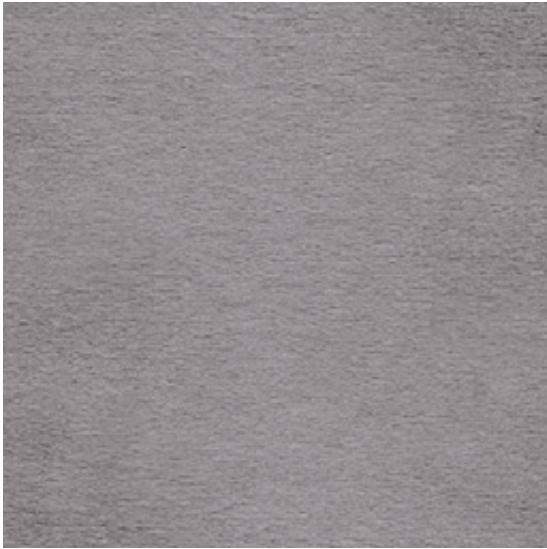
M38



M07



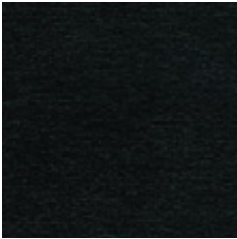
M54



M47



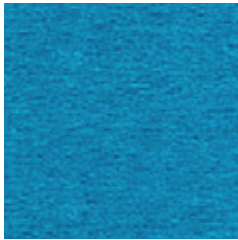
M62



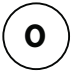
M43



M28

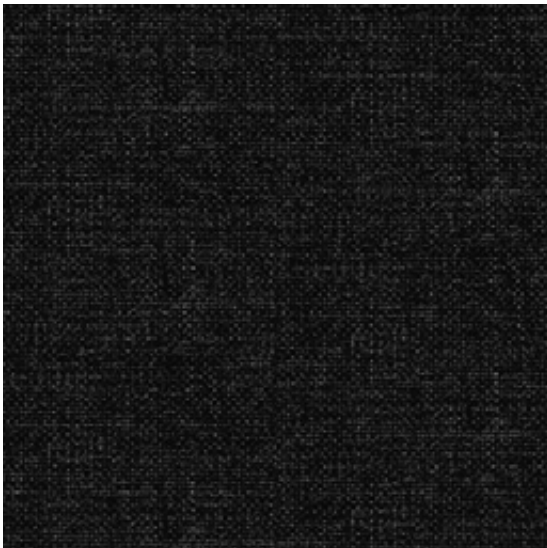


M31

Price group: Grupa cenowa: Preisgruppe: Groupe de prix :		
Composition: Skład: Material: Composition :	100%	polyester poliester Polyester polyester
Weight: Gramatura: Gewicht: Poids :	160 g/m ²	
Abrasion resistance: Odporność na ścieranie: Scheuerfestigkeit: Résistance à l'abrasion :	50 000	Martindale cycles cykli Martindale Touren Martindale cycles Martindales
Flammability: Trudnozapałność: Brandschutznormen: Résistance au feu :	EN 1021-1, EN 1021-2	
Other: Inne: Sonstiges: Autres :	EN 71-1 EN 71-2 EN 71-3	safety of toys (mechanical and physical properties) bezpieczeństwo zabawek (właściwości mechaniczne i fizyczne) Sicherheit von Spielzeug (mechanische und physikalische Eigenschaften) sécurité des jouets (propriétés mécaniques et physiques) safety of toys (flammability) bezpieczeństwo zabawek (palność) Sicherheit von Spielzeug (Entflammbarkeit) sécurité des jouets (inflammabilité) safety of toys (migration of certain elements) bezpieczeństwo zabawek (migracja określonych pierwiastków) Sicherheit von Spielzeug (Migration bestimmter Elemente) sécurité des jouets (migration de certains éléments)



EF076



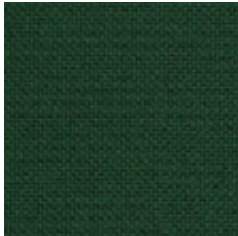
EF002



EF046



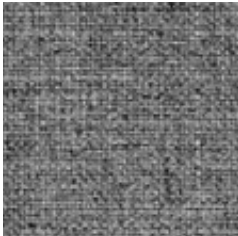
EF037



EF069



EF019



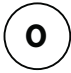
EF031



EF078



EF010

Price group: Grupa cenowa: Preisgruppe: Groupe de prix :		
Composition: Skład: Material: Composition :	100%	polypropylene polipropylen Polypropylen polypropylène
Weight: Gramatura: Gewicht: Poids :	230 g/m ²	
Abrasion resistance: Odporność na ścieranie: Scheuerfestigkeit: Résistance à l'abrasion :	≥30 000	Martindale cycles cykli Martindale Touren Martindale cycles Martindales
Colour fastness to light: Odporność barwy na światło: Lichtechtheit: Résistance de la couleur à la lumière :	EN ISO 105-B02 (min. 5)	
Flammability: Trudnozupalność: Brandschutznormen: Résistance au feu :	EN 1021-1	

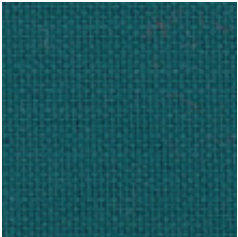
Polyester 4510



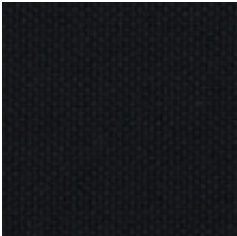
10-309



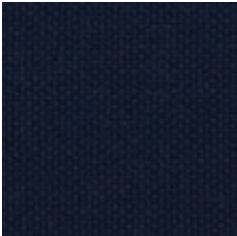
10-313



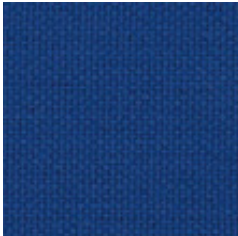
10-310



10-303




10-304



10-301

Polyester 4510

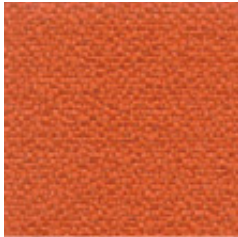
Price group: Grupa cenowa: Preisgruppe: Groupe de prix :		
Composition: Skład: Material: Composition :	100%	polyester poliester Polyester polyester
Weight: Gramatura: Gewicht: Poids :	238 g/m ²	
Abrasion resistance: Odporność na ścieranie: Scheuerfestigkeit: Résistance à l'abrasion :	60 000	Martindale cycles cykli Martindale Touren Martindale cycles Martindales



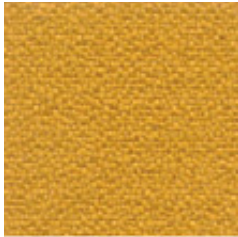
BN4007



BN4011



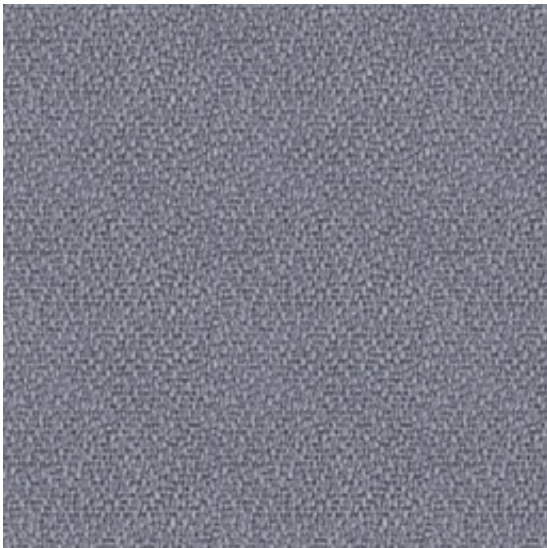
BN3012



BN3005



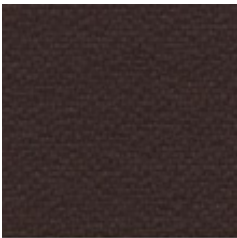
BN4017



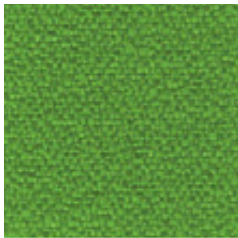
BN8078



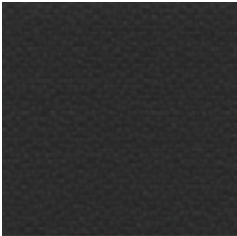
BN1008



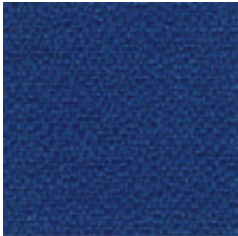
BN2036



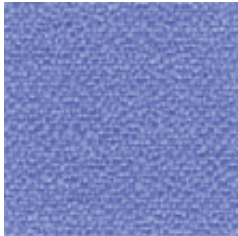
BN7048



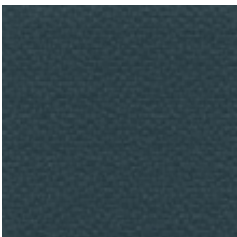
BN8033



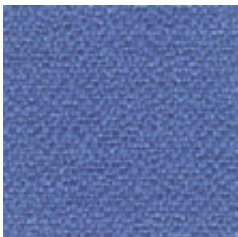
BN6016



BN6006



BN8010

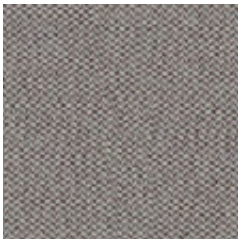


BN6003

Price group: Grupa cenowa: Preisgruppe: Groupe de prix :	1	
Composition: Skład: Material: Composition :	100%	polyester poliester Polyester polyester
Weight: Gramatura: Gewicht: Poids :	250 g/m ²	
Abrasion resistance: Odporność na ścieranie: Scheuerfestigkeit: Résistance à l'abrasion :	150 000	Martindale cycles cykli Martindale Touren Martindale cycles Martindales
Colour fastness to light: Odporność barwy na światło: Lichtechtheit: Résistance de la couleur à la lumière :	EN ISO 105-B02 (min. 6)	
Colour fastness to rubbing: Odporność barwy na tarcie: Reibechtheit: Résistance de la couleur au frottement:	EN ISO 105-X12 (wet: 4-5 / dry: 4-5)	
Pilling: Odporność na pilling: Pilling: Résistance au boulochage :	EN ISO 12945-2 (5)	
Flammability: Trudnozupalność: Brandschutznormen: Résistance au feu :	EN 1021-1, EN 1021-2, BS 5852 Crib 5, BS 7176 medium hazard	
Other: Inne: Sonstiges: Autres :	Oeko-Tex Standard 100 certificate	



CSE21



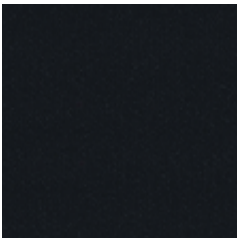
CSE02



CSE01



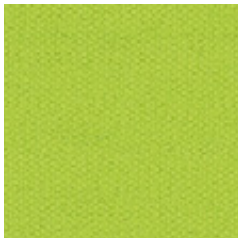
CSE03



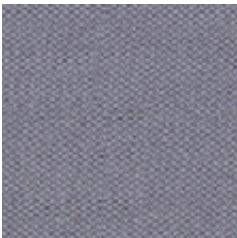
CSE14



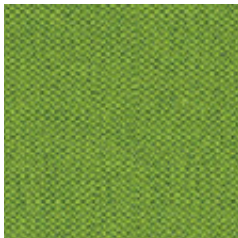
CSE13



CSE07



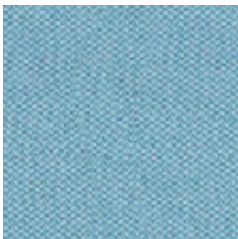
CSE11



CSE16



CSE19



CSE20



CSE10

Price group: Grupa cenowa: Preisgruppe: Groupe de prix :	1	
Composition: Skład: Material: Composition :	100%	polyester, non metallic dyestuffs poliester, nie zawiera pigmentów metalicznych Polyester, nicht schwermetallhaltige Farbstoffe polyester, teintures non métalliques
Weight: Gramatura: Gewicht: Poids :	320 g/m ²	
Abrasion resistance: Odporność na ścieranie: Scheuerfestigkeit: Résistance à l'abrasion :	≥100 000	Martindale cycles cykli Martindale Touren Martindale cycles Martindales
Colour fastness to light: Odporność barwy na światło: Lichtechtheit: Résistance de la couleur à la lumière :	EN ISO 105-B02 (min. 5)	
Flammability: Trudnozupalność: Brandschutznormen: Résistance au feu :	EN 1021-1, EN 1021-2 BS 7176 low hazard	
Other: Inne: Sonstiges: Autres :	Oeko-Tex Standard 100 certificate	



ERF4007



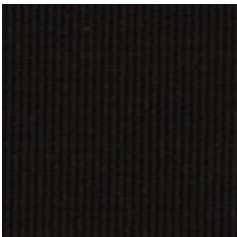
ERF4030



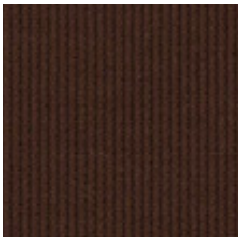
ERF3005



ERF7011



ERF8033



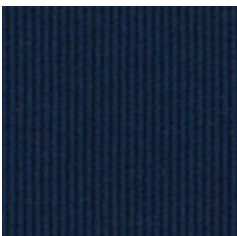
ERF2036



ERF2005



ERF1006



ERF6098



ERF8003



ERF8078



ERF6026



ERF7026

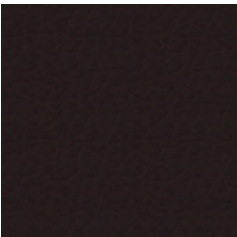


ERF6005

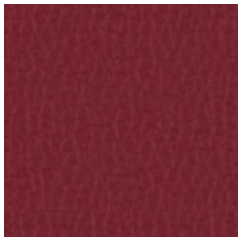


ERF6031

Price group: Grupa cenowa: Preisgruppe: Groupe de prix :	1	
Composition: Skład: Material: Composition :	100%	polyester poliester Polyester polyester
Weight: Gramatura: Gewicht: Poids :	220 g/m ²	
Abrasion resistance: Odporność na ścieranie: Scheuerfestigkeit: Résistance à l'abrasion :	70 000	Martindale cycles cykli Martindale Touren Martindale cycles Martindales
Colour fastness to light: Odporność barwy na światło: Lichtechtheit: Résistance de la couleur à la lumière :	EN ISO 105-B02 (min. 6)	
Colour fastness to rubbing: Odporność barwy na tarcie: Reibechtheit: Résistance de la couleur au frottement:	EN ISO 105-X12 (wet: 4-5 / dry: 4-5)	
Flammability: Trudnozupalność: Brandschutznormen: Résistance au feu :	EN 1021-1, EN 1021-2 BS 5852 Crib 5 BS 7176 medium hazard	
Other: Inne: Sonstiges: Autres :	Oeko-Tex Standard 100 certificate	



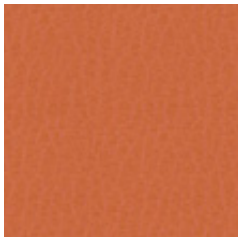
KN250



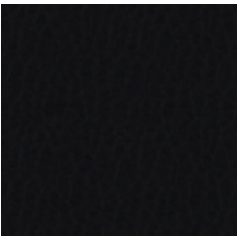
KN615



KN32



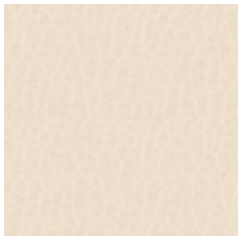
KN143



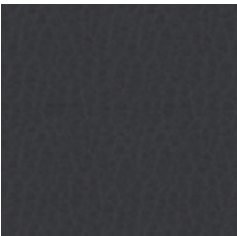
KN780



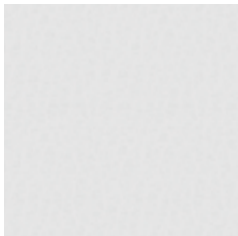
KN484



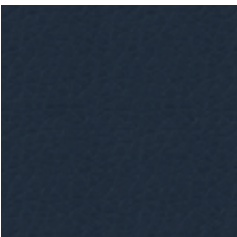
KN75/01



KN755



KN03



KN49



KN429

Price group:
Grupa cenowa:
Preisgruppe:
Groupe de prix :

1

Composition: Skład: Material: Composition :	upper layer: warstwa wierzchnia: Deckmaterial: couche supérieure :	100%	polyurethane poliuretan Polyurethan polyuréthane	
	bottom layer: podkład: Trägermaterial: couche inférieure :	65%	polyester poliester Polyester polyester	35% cotton bawełna Baumwolle coton

Weight:
Gramatura:
Gewicht:
Poids :

420 g/m²

Abrasion resistance:
Odporność na ścieranie:
Scheuerfestigkeit:
Résistance à l'abrasion :

100 000

Martindale cycles
cykli Martindale
Touren Martindale
cycles Martindales

Colour fastness to light:
Odporność barwy na światło:
Lichtechtheit:
Résistance de la couleur à la lumière :

EN ISO 105-B02
(min. 5)

Colour fastness to rubbing:
Odporność barwy na tarcie:
Reibechtheit:
Résistance de la couleur au frottement:

EN ISO 105-X12
(dry: 5)

Flammability:
Trudnozapałność:
Brandschutznormen:
Résistance au feu :

EN 1021-1
BS 5852 Source 0



YB105



YB130



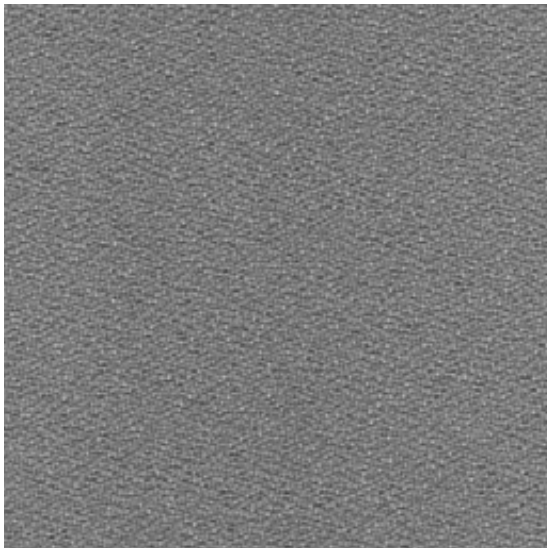
YB093



YB096



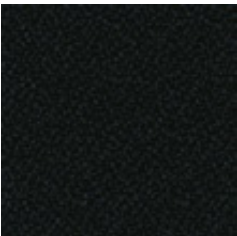
YB046



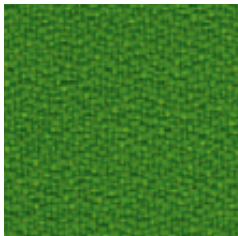
YB094



YB156



YB009



YB200



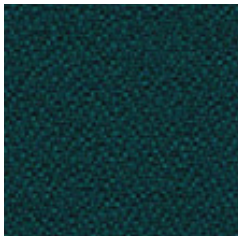
YB026



YB097



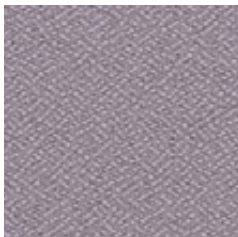
YB086



YB011



YB090



YB038

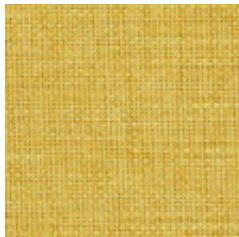
Price group: Grupa cenowa: Preisgruppe: Groupe de prix :	1	
Composition: Skład: Material: Composition :	100%	recycled polyester, non metallic dyestuffs poliester pochodzący z recyklingu, nie zawiera pigmentów metalicznych recycltes Polyester, nicht schwermetallhaltige Farbstoffe polyester recyclé, teintures non métalliques
Weight: Gramatura: Gewicht: Poids :	260 g/m ²	
Abrasion resistance: Odporność na ścieranie: Scheuerfestigkeit: Résistance à l'abrasion :	50 000	Martindale cycles cykli Martindale Touren Martindale cycles Martindales
Colour fastness to light: Odporność barwy na światło: Lichtechtheit: Résistance de la couleur à la lumière :	EN ISO 105-B02 (6)	
Flammability: Trudnozapalność: Brandschutznormen: Résistance au feu :	EN 1021-1, EN 1021-2 BS 7176 low hazard BS 476 Class 1	
Other: Inne: Sonstiges: Autres :	EU Ecolabel certificate Oeko-Tex Standard 100 certificate	



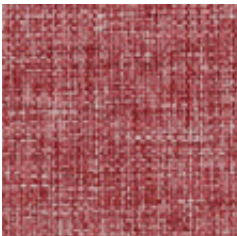
OL05



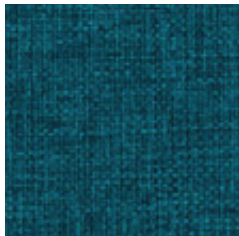
OL02



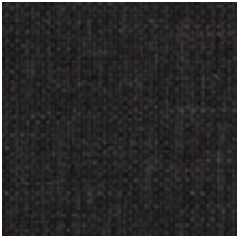
OL09



OL04



OL03



OL07



OL08



OL01



OL06

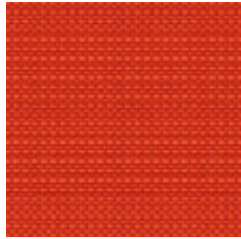
Price group: Grupa cenowa: Preisgruppe: Groupe de prix :	1	
Composition: Skład: Material: Composition :	100%	polyester poliester Polyester polyester
Weight: Gramatura: Gewicht: Poids :	310 g/m ²	
Abrasion resistance: Odporność na ścieranie: Scheuerfestigkeit: Résistance à l'abrasion :	162 500	Martindale cycles cykli Martindale Touren Martindale cycles Martindales
Colour fastness to light: Odporność barwy na światło: Lichtechtheit: Résistance de la couleur à la lumière :	EN ISO 105-B02 (5)	
Colour fastness to rubbing: Odporność barwy na tarcie: Reibechtheit: Résistance de la couleur au frottement:	EN ISO 105-X12 (wet: 4-5 / dry: 4-5)	
Pilling: Odporność na pilling: Pilling: Résistance au boulochage :	EN ISO 12945-2 (4-5)	
Flammability: Trudnozupalność: Brandschutznormen: Résistance au feu :	EN 1021-1, EN 1021-2	
Other: Inne: Sonstiges: Autres :	EU Ecolabel certificate Oeko-Tex Standard 100 certificate	

Sempre | SM

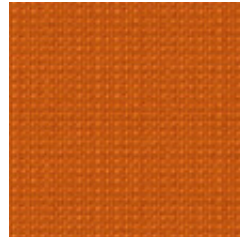
1



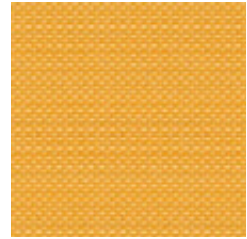
SM12



SM09



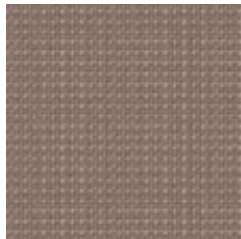
SM10



SM11



SM06



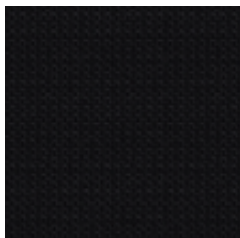
SM04



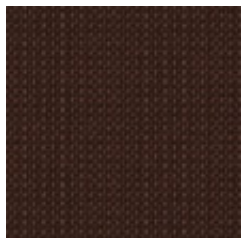
SM08



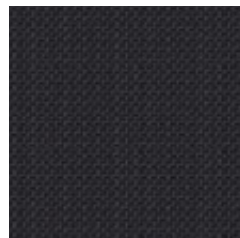
SM03



SM01



SM05

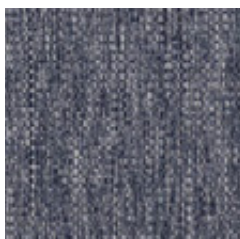


SM02



SM07

Sempre Melange | SMM



SMM03



SMM02



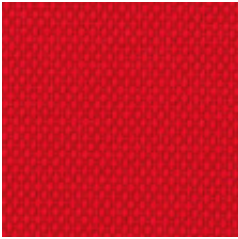
SMM01



Price group: Grupa cenowa: Preisgruppe: Groupe de prix :	1		
Composition: Skład: Material: Composition :	100%	polyester poliester Polyester polyester	
Weight: Gramatura: Gewicht: Poids :	366 g/m ²		
Abrasion resistance: Odporność na ścieranie: Scheuerfestigkeit: Résistance à l'abrasion :	155 000 ± 5 000	Martindale cycles cykli Martindale Touren Martindale cycles Martindales	
Colour fastness to light: Odporność barwy na światło: Lichtechtheit: Résistance de la couleur à la lumière :	EN ISO 105-B02 (3-4)	Colour fastness to rubbing: Odporność barwy na tarcie: Reibechtheit: Résistance de la couleur au frottement :	EN ISO 105-X12 (wet: 4-5 / dry: 4-5)
Pilling: Odporność na pilling: Pilling: Résistance au boulochage :	EN ISO 12945-2 (4-5)		
Flammability: Trudnozupalność: Brandschutznormen: Résistance au feu :	EN 1021-1, EN 1021-2	Other: Inne: Sonstiges: Autres :	EU Ecolabel certificate Oeko-Tex Standard 100 certificate

Sempre Melange | SMM

Price group: Grupa cenowa: Preisgruppe: Groupe de prix :	1		
Composition: Skład: Material: Composition :	100%	polyester poliester Polyester polyester	Weight: Gramatura: Gewicht: Poids : 375 g/m ²
Abrasion resistance: Odporność na ścieranie: Scheuerfestigkeit: Résistance à l'abrasion :	125 000	Martindale cycles cykli Martindale Touren Martindale cycles Martindales	
Colour fastness to light: Odporność barwy na światło: Lichtechtheit: Résistance de la couleur à la lumière :	EN ISO 105-B02 (4-5)		
Colour fastness to rubbing: Odporność barwy na tarcie: Reibechtheit: Résistance de la couleur au frottement :	EN ISO 105-X12 (wet: 4-5 / dry: 4-5)	Pilling: Odporność na pilling: Pilling: Résistance au boulochage :	EN ISO 12945-2 (5)
Flammability: Trudnozupalność: Brandschutznormen: Résistance au feu :	EN 1021-1, EN 1021-2	Other: Inne: Sonstiges: Autres :	EU Ecolabel certificate Oeko-Tex Standard 100 certificate



FLG64190



FLG64189



FLG61163



FLG62080



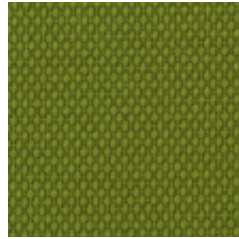
FLG64191



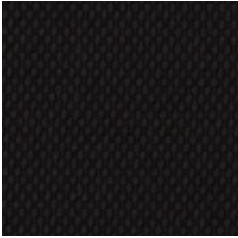
FLG61165



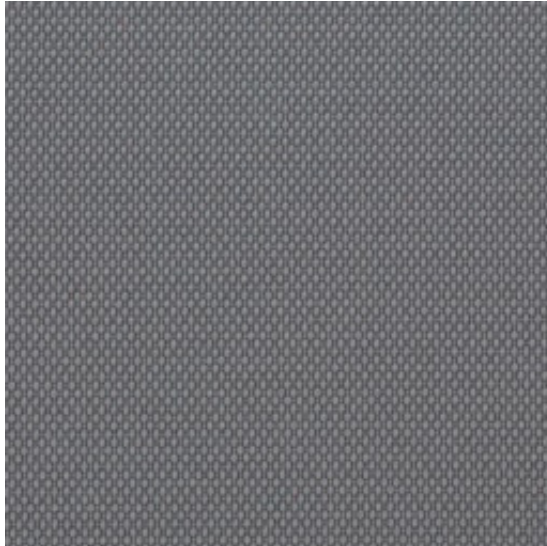
FLG61164



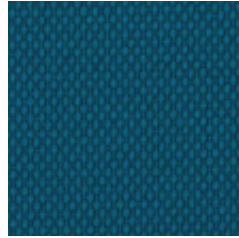
FLG68179



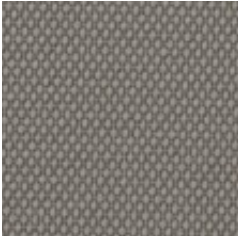
FLG60999



FLG60107



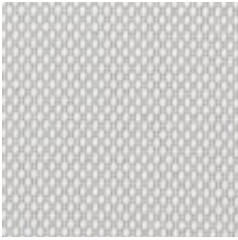
FLG67083



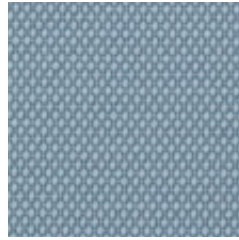
FLG60106



FLG67079

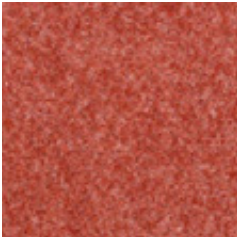


FLG60105



FLG66161

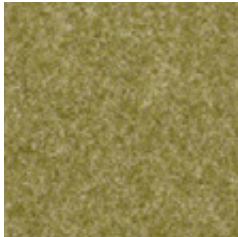
Price group: Grupa cenowa: Preisgruppe: Groupe de prix :	2	
Composition: Skład: Material: Composition :	100%	post-consumer recycled polyester poliester pochodzący z recyklingu recycltes Post-Consumer-Polyester polyester recyclé de récupération
Weight: Gramatura: Gewicht: Poids :	307 g/m ²	
Abrasion resistance: Odporność na ścieranie: Scheuerfestigkeit: Résistance à l'abrasion :	90 000	Martindale cycles cykli Martindale Touren Martindale cycles Martindales
Colour fastness to light: Odporność barwy na światło: Lichtechtheit: Résistance de la couleur à la lumière :	EN ISO 105-B02 (min. 5-7)	
Colour fastness to rubbing: Odporność barwy na tarcie: Reibechtheit: Résistance de la couleur au frottement :	EN ISO 105-X12 (wet: 4-5 / dry: 4-5)	
Pilling: Odporność na pilling: Pilling: Résistance au boulochage :	EN ISO 12945-2 (5)	
Flammability: Trudnozupalność: Brandschutznormen: Résistance au feu :	EN 1021-1, EN 1021-2 Calif. Bull. 117E	
Other: Inne: Sonstiges: Autres :	EU Ecolabel certificate Cradle to Cradle certificate Oeko-Tex Standard 100 certificate	



HG63058



HG68102



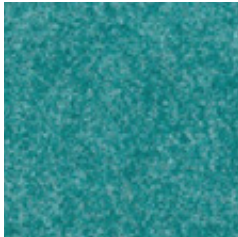
HG68103



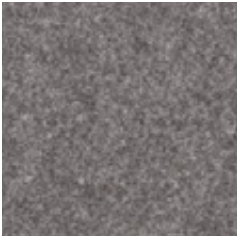
HG60158



HG60155



HG67048



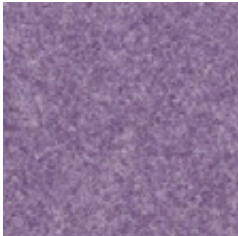
HG60159



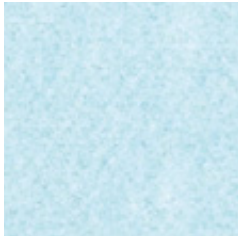
HG66133



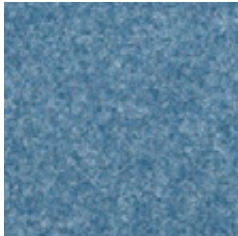
HG65078




HG65077



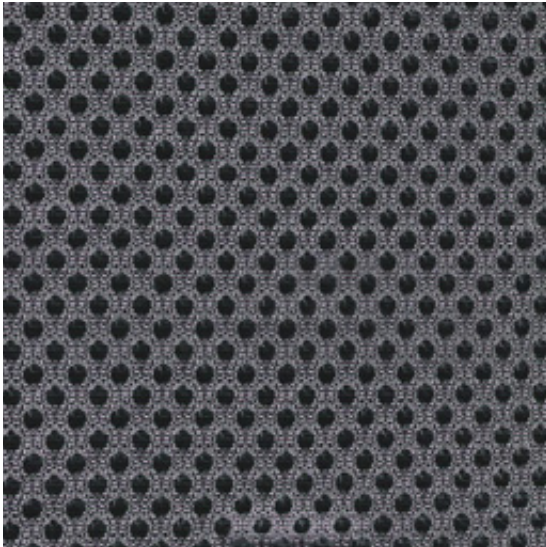
HG66135



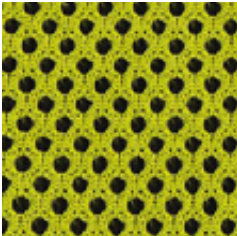
HG67046

Price group: Grupa cenowa: Preisgruppe: Groupe de prix :			
Composition: Skład: Material: Composition :	80%	polyester poliester Polyester polyester	viscose wiskoza Viskose viscose
Weight: Gramatura: Gewicht: Poids :	170 g/m ²		
Colour fastness to light: Odporność barwy na światło: Lichtechtheit: Résistance de la couleur à la lumière :	EN ISO 105-B02 (5-7)		
Colour fastness to rubbing: Odporność barwy na tarcie: Reibechtheit: Résistance de la couleur au frottement :	EN ISO 105-X12 (wet: min. 4-5 / dry: min. 4-5)		
Flammability: Trudnozupalność: Brandschutznormen: Résistance au feu :	BS 476-7 Class 1 Contains no flame retardant chemicals		
Other: Inne: Sonstiges: Autres :	Oeko-Tex Standard 100 certificate		

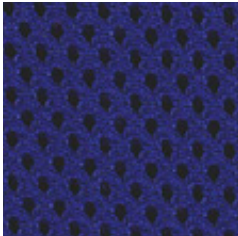
mesh 3D fabric



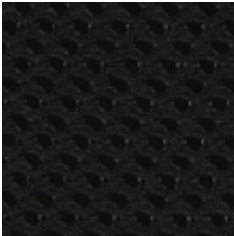
MR02



MR04



MR03



MR01

Price group:
Grupa cenowa:
Preisgruppe:
Groupe de prix :

2

Composition:
Skład:
Material:
Composition :

100%

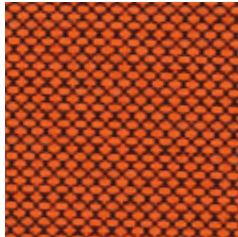
polyester
poliester
Polyester
polyester

Weight:
Gramatura:
Gewicht:
Poids :

275 g/m²



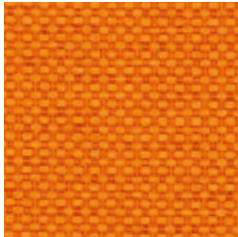
RDF4028



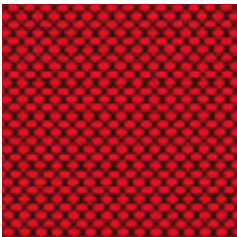
RDXF3594



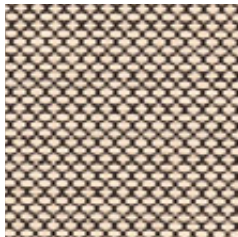
RDF3094



RDF3082



RDXF4528



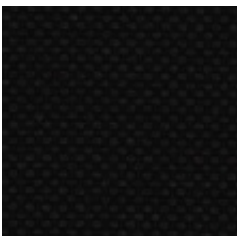
RDXF1510



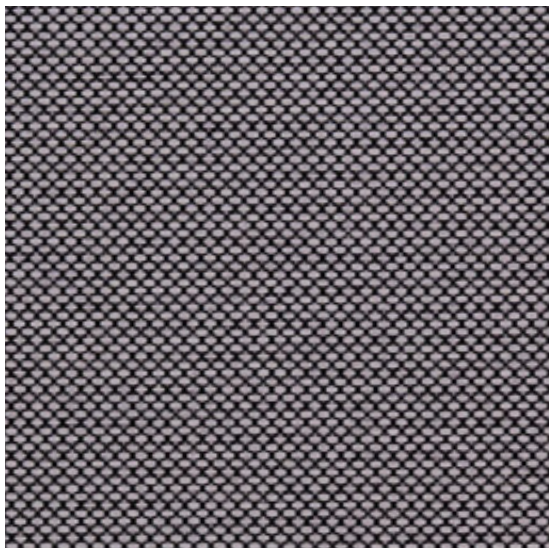
RDF1008



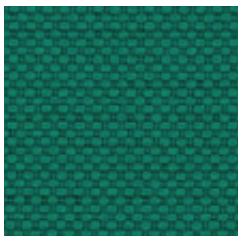
RDF7025



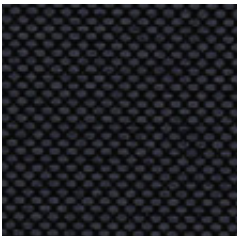
RDF8033



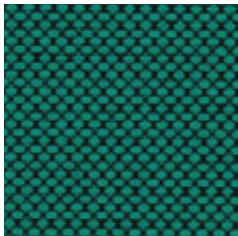
RDXF8532



RDF7008



RDXF8517



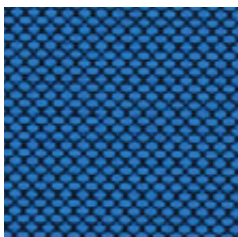
RDXF7508



RDF8032

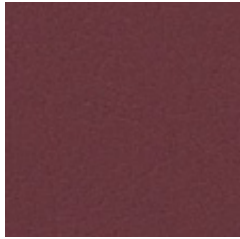


RDF6075



RDXF6575

Price group: Grupa cenowa: Preisgruppe: Groupe de prix :	2	
Composition: Skład: Material: Composition :	100%	polyester FR poliester FR Polyester FR polyester FR
Weight: Gramatura: Gewicht: Poids :	400 g/m ²	
Abrasion resistance: Odporność na ścieranie: Scheuerfestigkeit: Résistance à l'abrasion :	80 000	Martindale cycles cykli Martindale Touren Martindale cycles Martindales
Colour fastness to light: Odporność barwy na światło: Lichtechtheit: Résistance de la couleur à la lumière :	EN ISO 105-B02 (6)	
Colour fastness to rubbing: Odporność barwy na tarcie: Reibechtheit: Résistance de la couleur au frottement :	EN ISO 105-X12 (wet: 4-5 / dry: 4-5)	
Flammability: Trudnozapalność: Brandschutznormen: Résistance au feu :	EN 1021-1, EN 1021-2 BS 5852 Crib 5 BS 7176 medium hazard DIN 4102 B1, NF D 60-013 AM 18 NF P 92-501-7 M1 Önorm A 3800-1 Class B1-Q1-TR1 Önorm B 3825, Calif. Bull. 117E	
Other: Inne: Sonstiges: Autres :	Oeko-Tex Standard 100 certificate	



VL2001



VL2075



VL6019



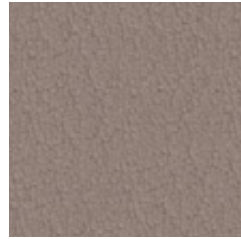
VL6012



VL0020



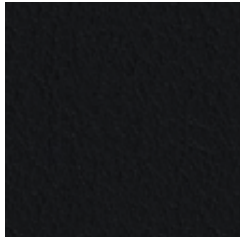
VL4041



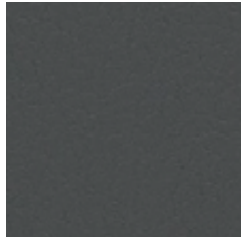
VL0034



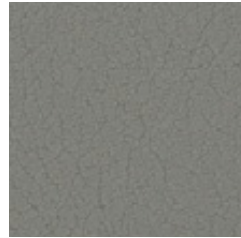
VL1048



VL9035



VL4003



VL4052



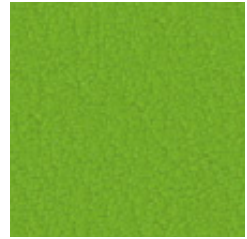
VL4040



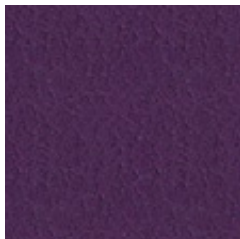
VL4043



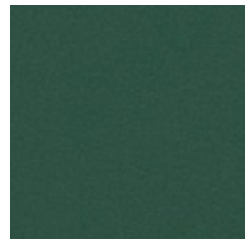
VL4045



VL5041



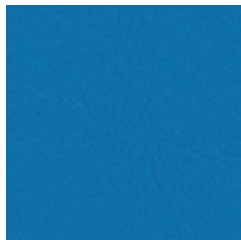
VL7001



VL5069



VL3067



VL3069



Cigarette & Match



High abrasion resistance

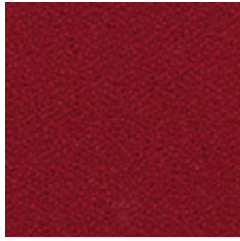


Easily washable



Confirmed safety

Price group: Grupa cenowa: Preisgruppe: Groupe de prix :	2		
Composition: Skład: Material: Composition :	upper layer: warstwa wierzchnia: Deckmaterial: couche supérieure :	100%	vinyl / urethane winył / uretan Vinyl / Urethan vinyle / uréthane
	bottom layer: podkład: Trägermaterial: couche inférieure :	100%	Hi-Loft polyester Hi-Loft poliester Hi-Loft Polyester polyester Hi-Loft
Weight: Gramatura: Gewicht: Poids :	650 g/m ²		
Abrasion resistance: Odporność na ścieranie: Scheuerfestigkeit: Résistance à l'abrasion :	300 000		Martindale cycles cykli Martindale Touren Martindale cycles Martindales
Colour fastness to light: Odporność barwy na światło: Lichtechtheit: Résistance de la couleur à la lumière :	EN ISO 105-B02 (5)		
Flammability: Trudnozupalność: Brandschutznormen: Résistance au feu :	EN 1021-1, EN 1021-2 DIN 4102 B2 NF P 92-503 M2 Önorm A 3800-1 Q1 Önorm B 3825		
Other: Inne: Sonstiges: Autres :	EN 71-3		safety of toys (migration of certain elements) bezpieczeństwo zabawek (migracja określonych pierwiastków) Sicherheit von Spielzeug (Migration bestimmter Elemente) sécurité des jouets (migration de certains éléments)
	PERMABLOK3®		superior antibacterial, stain resistant and antifungal protection doskonała ochrona przed bakteriami, plamami i grzybami hervorragender Schutz gegen Bakterien, Flecken und Pilzbefall traitement de protection, antibactérien, antitaches et antifongique



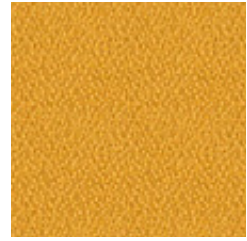
XR136



XR079



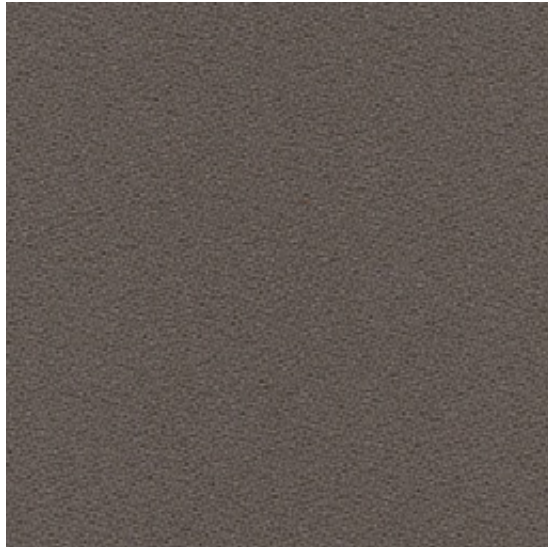
XR076



XR072



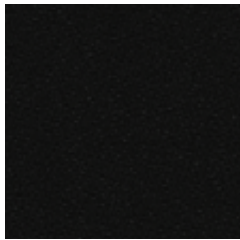
XR046



XR081



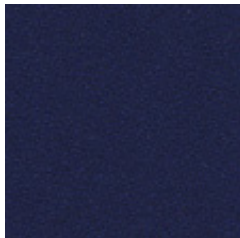
XR108



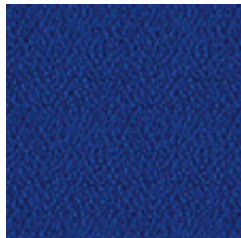
XR009



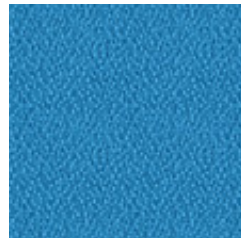
XR047



XR026



XR005



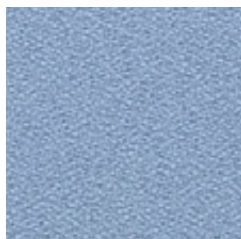
XR073



XR160



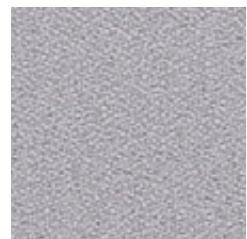
XR171



XR095



XR102



XR094



Cigarette & Match



High flame resistance



Environmentally friendly



Recycled origin



High abrasion resistance



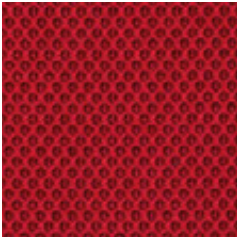
Confirmed safety

Price group: Grupa cenowa: Preisgruppe: Groupe de prix :	2	
Composition: Skład: Material: Composition :	100%	recycled flame retardant polyester, non metallic dyestuffs trudnopalny poliester pochodzący z recyklingu, nie zawiera pigmentów metalicznych recycltes, schwerentflammbares Polyester, nicht schwermetallhaltige Farbstoffe polyester recyclé ignifuge, teintures non métalliques
Weight: Gramatura: Gewicht: Poids :	310 g/m ²	
Abrasion resistance: Odporność na ścieranie: Scheuerfestigkeit: Résistance à l'abrasion :	≥100 000	Martindale cycles cykli Martindale Touren Martindale cycles Martindales
Colour fastness to light: Odporność barwy na światło: Lichtechtheit: Résistance de la couleur à la lumière :	EN ISO 105-B02 (6)	
Colour fastness to rubbing: Odporność barwy na tarcie: Reibechtheit: Résistance de la couleur au frottement :	EN ISO 105-X12 (wet: 4 / dry: 4)	
Pilling: Odporność na pilling: Pilling: Résistance au boulochage :	EN ISO 12945-2 (5)	
Flammability: Trudnozapałność: Brandschutznormen: Résistance au feu :	EN 1021-1, EN 1021-2 BS 5852 Crib 5 BS 7176 medium hazard BS 476 Class 1 DIN 4102 B1	
Other: Inne: Sonstiges: Autres :	EU Ecolabel certificate Oeko-Tex Standard 100 certificate	

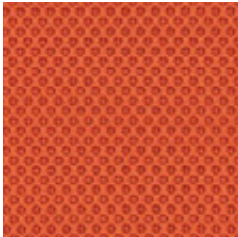
Runner | RN

3

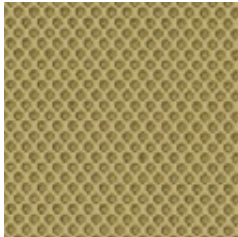
mesh 3D fabric



RN64089



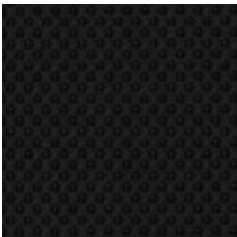
RN63034



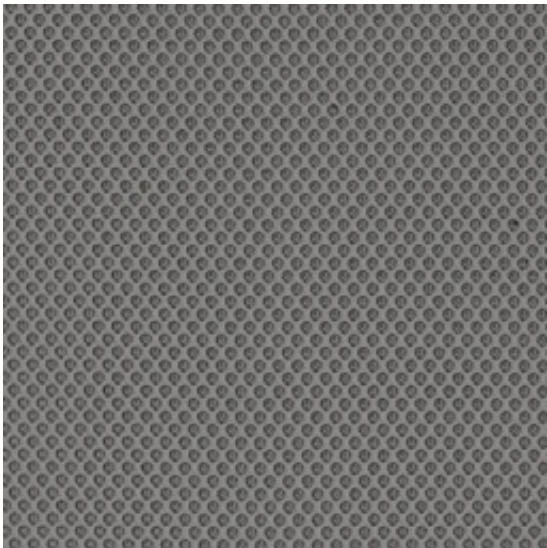
RN62064



RN61128



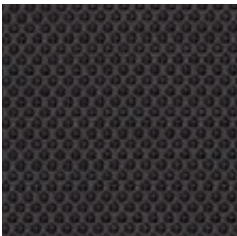
RN60999



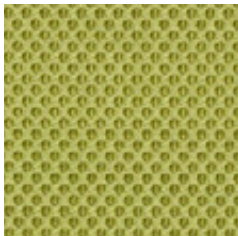
RN60011



RN60061



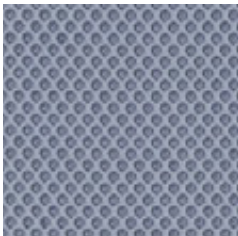
RN60025



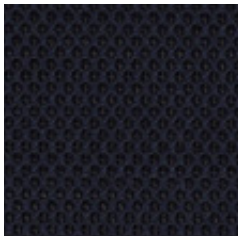
RN68056



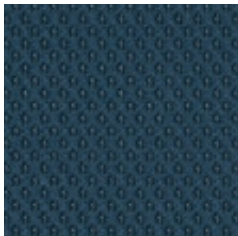
RN60165



RN65078



RN66064



RN66140



Cigarette & Match



Confirmed safety

Price group: Grupa cenowa: Preisgruppe: Groupe de prix :	3	
Composition: Skład: Material: Composition :	100%	polyester poliester Polyester polyester
Weight: Gramatura: Gewicht: Poids :	318 g/m ²	
Abrasion resistance: Odporność na ścieranie: Scheuerfestigkeit: Résistance à l'abrasion :	70 000	Martindale cycles cykli Martindale Touren Martindale cycles Martindales
Colour fastness to light: Odporność barwy na światło: Lichtechtheit: Résistance de la couleur à la lumière :	EN ISO 105-B02 (5-7)	
Colour fastness to rubbing: Odporność barwy na tarcie: Reibechtheit: Résistance de la couleur au frottement:	EN ISO 105-X12 (wet: 4-5 / dry: 4-5)	
Pilling: Odporność na pilling: Pilling: Résistance au boulochage :	EN ISO 12945-2 (5)	
Flammability: Trudnozapałność: Brandschutznormen: Résistance au feu :	EN 1021-1, EN 1021-2 Calif. Bull. 117E	
Other: Inne: Sonstiges: Autres :	Oeko-Tex Standard 100 certificate 100% free of heavy metals	



SX2012



SX0013



SX5008



SX5020



SX4024



SX0009



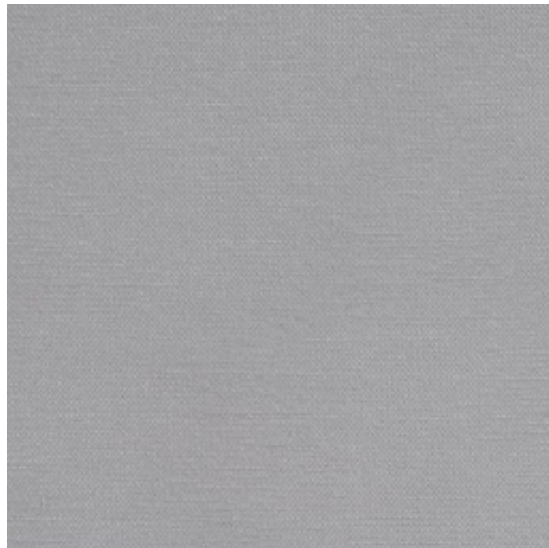
SX0001



SX4002



SX9001



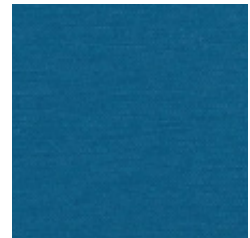
SX4001



SX3007



SX2016



SX3066



Cigarette & Match



High abrasion resistance



Easily washable

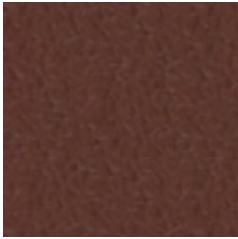


Confirmed safety

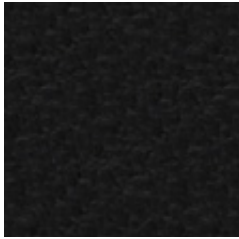
Price group: Grupa cenowa: Preisgruppe: Groupe de prix :	3		
Composition: Skład: Material: Composition :	upper layer: warstwa wierzchnia: Deckmaterial: couche supérieure :	100%	vinyl / urethane winył / uretan Vinyl / Urethan vinyle / uréthane
	bottom layer: podkład: Trägermaterial: couche inférieure :	100%	Hi-Loft polyester Hi-Loft poliester Hi-Loft Polyester polyester Hi-Loft
Weight: Gramatura: Gewicht: Poids :	685 g/m ²		
Abrasion resistance: Odporność na ścieranie: Scheuerfestigkeit: Résistance à l'abrasion :	300 000		Martindale cycles cykli Martindale Touren Martindale cycles Martindales
Flammability: Trudnozapałność: Brandschutznormen: Résistance au feu :	EN 1021-1, EN 1021-2 DIN 4102 B2 NF P 92-503 M2 Önorm B 3825 Önorm A 3800-1 Q1		
Other: Inne: Sonstiges: Autres :	EN 71-3		safety of toys (migration of certain elements) bezpieczeństwo zabawek (migracja określonych pierwiastków) sicherheit von Spielzeug (Migration bestimmter Elemente) sécurité des jouets (migration de certains éléments)
	PERMABLOK3®		superior antibacterial, stain resistant and antifungal protection doskonała ochrona przed bakteriami, plamami i grzybami hervorragender Schutz gegen Bakterien, Flecken und Pilzbefall traitement de protection, antibactérien, antitaches et antifongique

Split Leather | SP

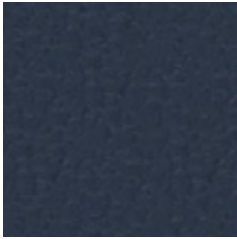
3



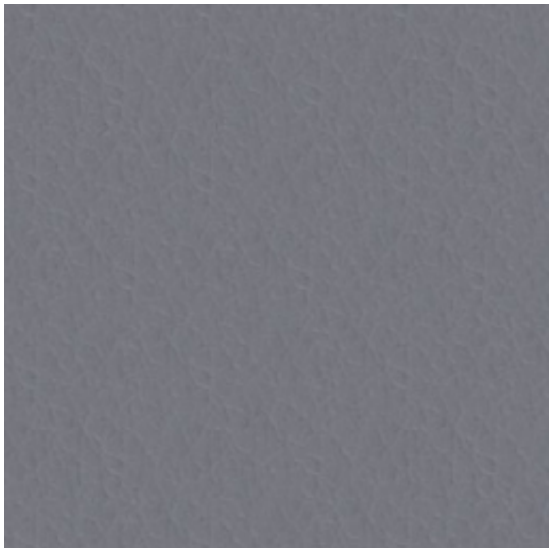
SP02



SP01



SP06



SP03

Split Leather | SP

Price group: Grupa cenowa: Preisgruppe: Groupe de prix :	3	leather in front front tapicerowany skórą Leder nur auf der Vorderseite partie avant tapissée de cuir
Composition: Skład: Material: Composition :	100%	pigmented split leather (1.1 - 1.3 mm) skóra dwoina (1,1 - 1,3 mm) Spaltleder (1,1 - 1,3 mm) croûte de cuir (1,1 - 1,3 mm)
Flammability: Trudnozapałność: Brandschutznormen: Résistance au feu :	EN 1021-1, EN 1021-2	

EN Split Leather SP in front, matching Imitation Leather V in back

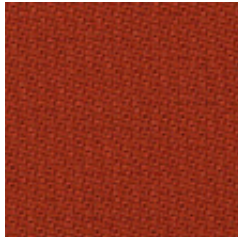
PL przód krzesła Split Leather SP, tył Imitation Leather V, w pasujących do siebie kolorach

DE Vorderseite der Stühle in Split Leather SP, Rückseite der Stühle in Imitation Leather V in identischen Farben

FR partie avant du siège en Split Leather SP, partie arrière en Imitation Leather V de la couleur correspondante

Step | STG

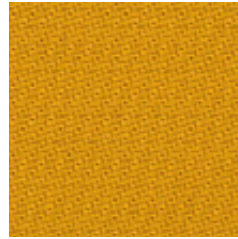
3



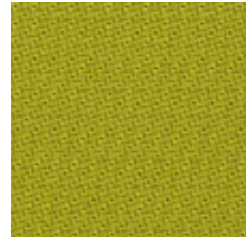
STG63075



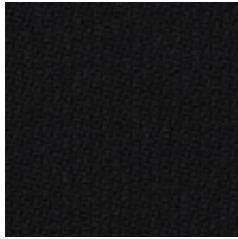
STG63012



STG62057



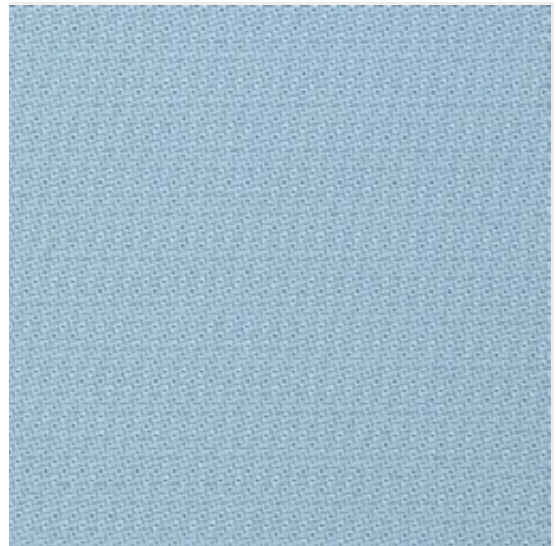
STG68119



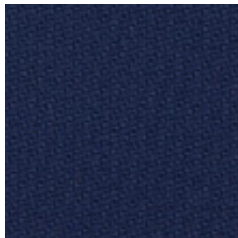
STG60999



STG68120



STG67004



STG65011



STG66018

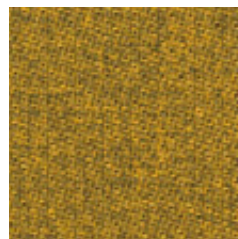
Step Melange | STMG



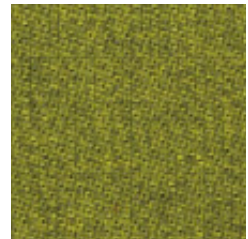
STMG63075



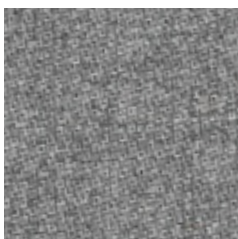
STMG61103



STMG62057



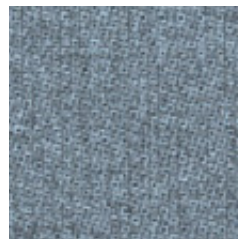
STMG68119



STMG60004



STMG61104



STMG67004



Cigarette & Match



High flame resistance



Environmentally friendly

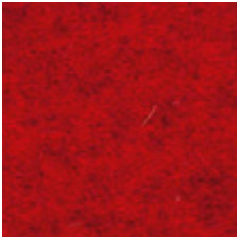


Confirmed safety

Step | STG

Step Melange | STMG

Price group: Grupa cenowa: Preisgruppe: Groupe de prix :	3	
Composition: Skład: Material: Composition :	100%	Trevira CS
Weight: Gramatura: Gewicht: Poids :	335 g/m ²	
Abrasion resistance: Odporność na ścieranie: Scheuerfestigkeit: Résistance à l'abrasion :	100 000	Martindale cycles cykli Martindale Touren Martindale cycles Martindales
Colour fastness to light: Odporność barwy na światło: Lichtechtheit: Résistance de la couleur à la lumière :	EN ISO 105-B02 (min. 5-7)	
Colour fastness to rubbing: Odporność barwy na tarcie: Reibechtheit: Résistance de la couleur au frottement:	EN ISO 105-X12 (wet: 4-5 / dry: 4-5)	
Pilling: Odporność na pilling: Pilling: Résistance au boulochage :	EN ISO 12945-2 (min. 4-5)	
Flammability: Trudnozupalność: Brandschutznormen: Résistance au feu :	EN 1021-1, EN 1021-2, BS 5852 Crib 5, BS 7176 medium hazard, DIN 4102 B1, NF P 92-503-5 M1, NF D 60-013 AM 18, Calif. Bull. 117E	
Other: Inne: Sonstiges: Autres :	EU Ecolabel certificate Oeko-Tex Standard 100 certificate	



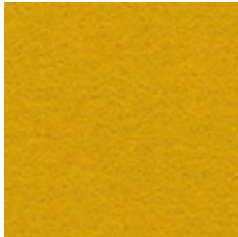
CUZ63



CUZ13



CUZ82



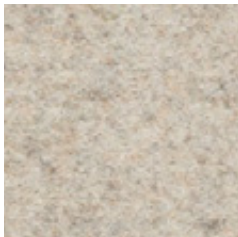
CUZ2W



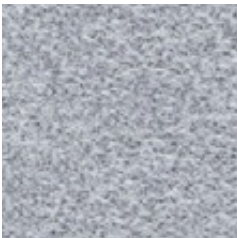
CUZ30



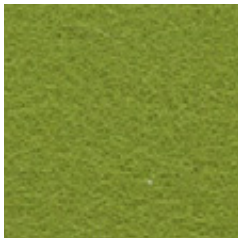
CUZ28



CUZ2Q



CUZ1E



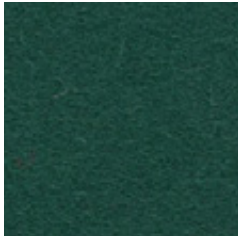
CUZ53



CUZ1R



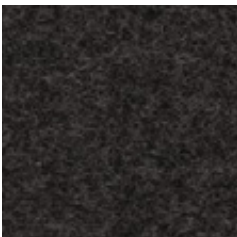
CUZ2Z



CUZ1N



CUZ1K



CUZ67



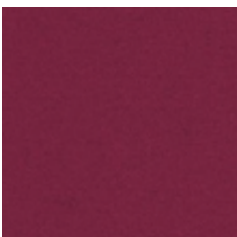
CUZ1W



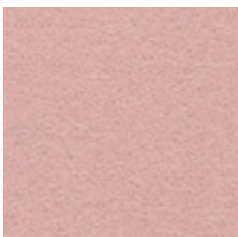
CUZ3B



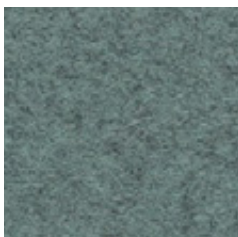
CUZ1M



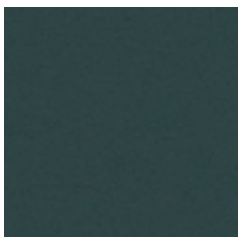
CUZ21



CUZ2R



CUZ33



CUZ1P



Cigarette & Match

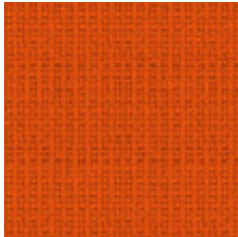


Natural origin

Price group: Grupa cenowa: Preisgruppe: Groupe de prix :	4	
Composition: Skład: Material: Composition :	100%	virgin wool, non metallic dyestuffs czysta wełna, nie zawiera pigmentów metalicznych Schurwolle, nicht schwermetallhaltige Farbstoffe pure laine vierge, teintures non métalliques
Weight: Gramatura: Gewicht: Poids :	460 g/m ²	
Abrasion resistance: Odporność na ścieranie: Scheuerfestigkeit: Résistance à l'abrasion :	≥50 000	Martindale cycles cykli Martindale Touren Martindale cycles Martindales
Colour fastness to light: Odporność barwy na światło: Lichtechtheit: Résistance de la couleur à la lumière :	EN ISO 105-B02 (5)	
Colour fastness to rubbing: Odporność barwy na tarcie: Reibechtheit: Résistance de la couleur au frottement:	EN ISO 105-X12 (wet: 4 / dry: 4)	
Flammability: Trudnozupalność: Brandschutznormen: Résistance au feu :	EN 1021-1, EN 1021-2 BS 7176 low hazard BS 476 Class 1 NF D 60-013	



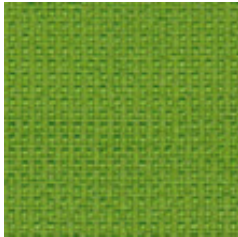
F18



F45



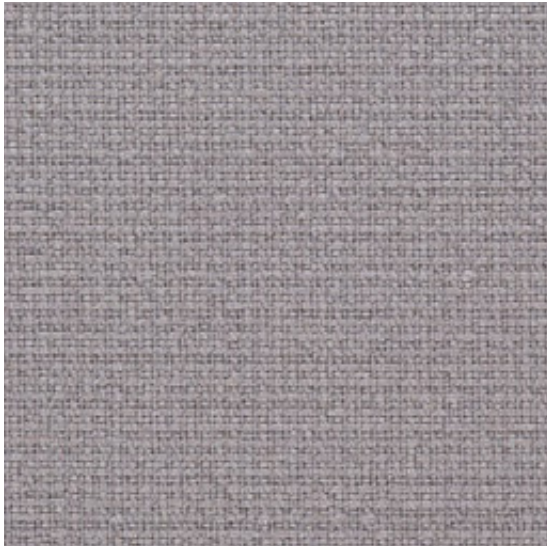
F19



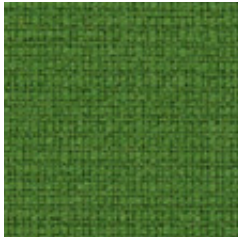
F03



F46



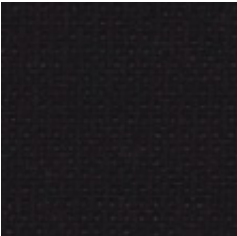
F47



F49



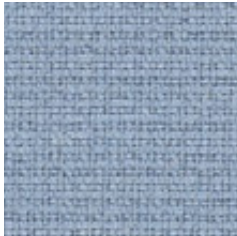
F07



F10



F40

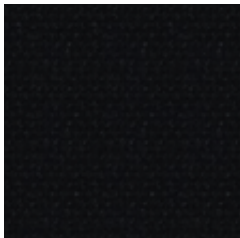


F80

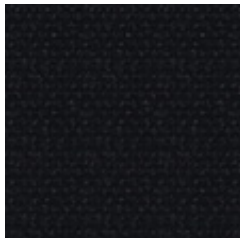
Price group: Grupa cenowa: Preisgruppe: Groupe de prix :	4		
Composition: Skład: Material: Composition :	95%	wool wełna Wolle laine	5% polyamide poliamid Polyamid polyamide
Weight: Gramatura: Gewicht: Poids :	450 g/m ²		
Abrasion resistance: Odporność na ścieranie: Scheuerfestigkeit: Résistance à l'abrasion :	200 000	Martindale cycles cykli Martindale Touren Martindale cycles Martindales	
Colour fastness to light: Odporność barwy na światło: Lichtechtheit: Résistance de la couleur à la lumière :	EN ISO 105-B02 (min. 5-7)		
Colour fastness to rubbing: Odporność barwy na tarcie: Reibechtheit: Résistance de la couleur au frottement:	EN ISO 105-X12 (wet: 4-5 / dry: 4-5)		
Pilling: Odporność na pilling: Pilling: Résistance au boulochage :	EN ISO 12945-2 (4)		
Flammability: Trudnozupalność: Brandschutznormen: Résistance au feu :	EN 1021-1, EN 1021-2 BS 5852 Crib 5 NF D 60-013 AM 18 Önorm B 3825-B1-3 800-Q1 UK Calif. Bull. 117E		
Other: Inne: Sonstiges: Autres :	EU Ecolabel certificate Oeko-Tex Standard 100 certificate		



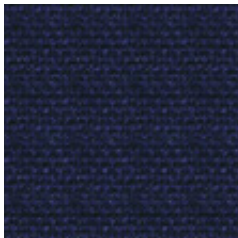
AS078



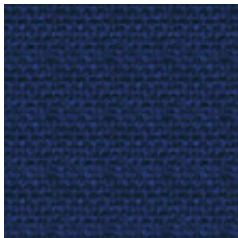
AS064



AS000



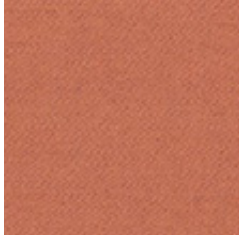
AS061



AS004

Price group: Grupa cenowa: Preisgruppe: Groupe de prix :	4							
Composition: Skład: Material: Composition :	60%	polypropylene polipropylen Polypropylen polypropylène	29%	wool wełna Wolle laine	10%	viscose wiskoza Viskose viscose	1%	carbon fibre włókno węglowe Carbon Faser fibre de carbone
Weight: Gramatura: Gewicht: Poids :	385 g/m ²							
Abrasion resistance: Odporność na ścieranie: Scheuerfestigkeit: Résistance à l'abrasion :	≥60 000			Martindale cycles cykli Martindale Touren Martindale cycles Martindales				
Colour fastness to light: Odporność barwy na światło: Lichtechtheit: Résistance de la couleur à la lumière :	EN ISO 105-B02 (5)							
Flammability: Trudnozupalność: Brandschutznormen: Résistance au feu :	EN 1021-1, EN 1021-2 BS 7176 Low Hazard							
Other: Inne: Sonstiges: Autres :	<p>The fabric with unique anti-static properties. It has been specifically designed to dissipate any build up of static electricity so there are no nasty shocks.</p> <p>Tkanina o wyjątkowych właściwościach antystatycznych. Została zaprojektowana tak, aby rozpraszać nagromadzone ładunki elektrostatyczne i uniknąć nieprzyjemnych dla człowieka wyładowań.</p> <p>Hi-Tech ist ein besonders leistungsstarker Polsterstoff mit einzigartigen antistatischen Eigenschaften. Er wurde speziell entwickelt, um den Aufbau statischer Aufladung vom Möbelstück zur Erde abzuleiten, so dass es keine unangenehmen Schläge gibt.</p> <p>Tissu ayant des propriétés antistatiques exceptionnelles. Grâce à sa structure, il disperse des charges électrostatiques qui s'accumulent, et il évite ainsi des petites décharges désagréables.</p>							

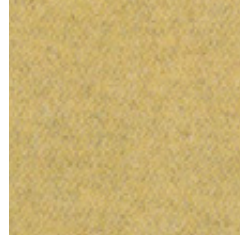
EN for selected products, details in price lists and finishes matrix
PL do wybranych produktów, szczegóły w cennikach oraz matrixie wykończeń
DE für ausgewählte Produkte, Details in den Preislisten und der Finishes Matrix
FR uniquement aux sélectionnés produits, pour plus d'informations,
 veuillez vous reporter aux tarifs publics et à la matrice de finitions



LDS75



LDS74



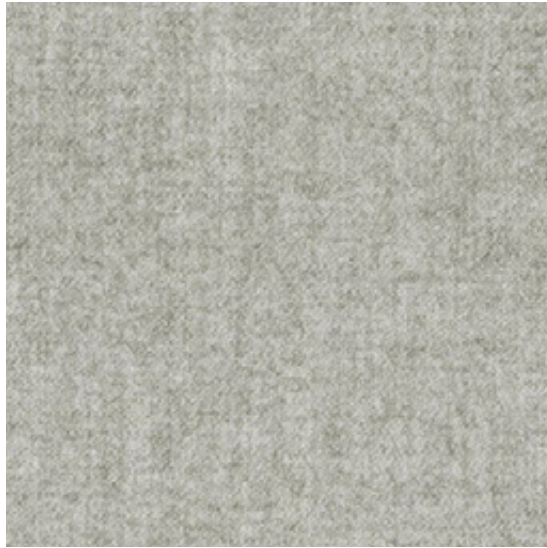
LDS45



LDS44



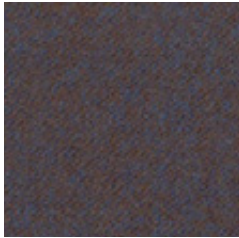
LDS73



LDS08



LDS28



LDS38



LDS46



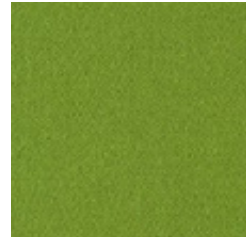
LDS17



LDS62



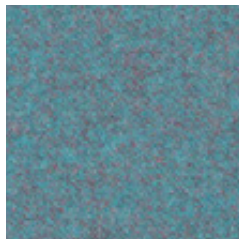
LDS63



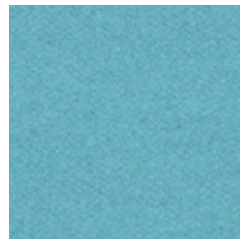
LDS47



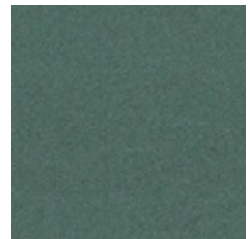
LDS07



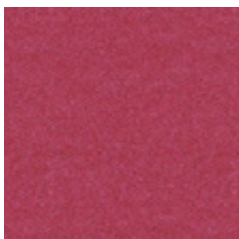
LDS56



LDS55



LDS49



LDS36



Cigarette & Match



High abrasion resistance



Environmentally friendly

Price group: Grupa cenowa: Preisgruppe: Groupe de prix :	4			
Composition: Skład: Material: Composition :	95%	virgin wool czysta wełna Schurwolle pure laine vierge	5%	polyamide poliamid Polyamid polyamide
Weight: Gramatura: Gewicht: Poids :	400 g/m ²			
Abrasion resistance: Odporność na ścieranie: Scheuerfestigkeit: Résistance à l'abrasion :	≥100 000	Martindale cycles cykli Martindale Touren Martindale cycles Martindales		
Colour fastness to light: Odporność barwy na światło: Lichtechtheit: Résistance de la couleur à la lumière :	EN ISO 105-B02 (5)			
Colour fastness to rubbing: Odporność barwy na tarcie: Reibechtheit: Résistance de la couleur au frottement:	EN ISO 105-X12 (wet: 4 / dry: 4)			
Pilling: Odporność na pilling: Pilling: Résistance au boulochage :	EN ISO 12945-2 (4)			
Flammability: Trudnozapałność: Brandschutznormen: Résistance au feu :	EN 1021-1, EN 1021-2 BS 7176 low hazard NF D 60-013 Önorm A 3800-1 Q1 Önorm B 3825			
Other: Inne: Sonstiges: Autres :	EU Ecolabel certificate			



FYR21

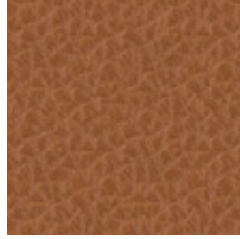
Price group: Grupa cenowa: Preisgruppe: Groupe de prix :	4					
Composition: Skład: Material: Composition :	50%	polyamide poliamid Polyamid polyamide	30%	wool wełna Wolle laine	20%	flax len Flachs lin
Weight: Gramatura: Gewicht: Poids :	390 g/m ²					
Abrasion resistance: Odporność na ścieranie: Scheuerfestigkeit: Résistance à l'abrasion :	≥200 000			Martindale cycles cykli Martindale Touren Martindale cycles Martindales		
Colour fastness to light: Odporność barwy na światło: Lichtechtheit: Résistance de la couleur à la lumière :	EN ISO 105-B02 (5)					
Flammability: Trudnozapalność: Brandschutznormen: Résistance au feu :	EN 1021-1, EN 1021-2 BS 5852 Crib 5 BS 7176 medium hazard NF D 60 - 013 AM 18					

Fine Leather | SD

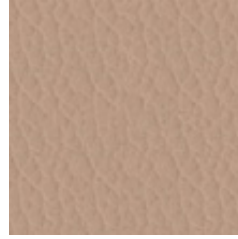
4 5



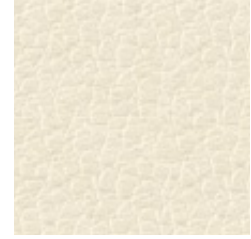
SD15



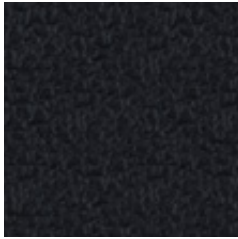
SD09



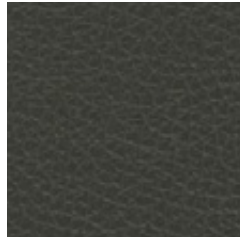
SD16



SD06



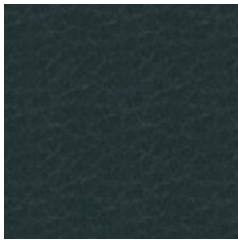
SD01



SD19



SD18



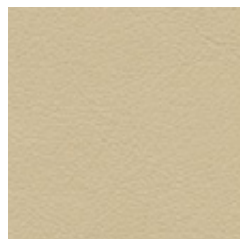
SD08

Fine Leather | LE

4 5



LE01



LE06

Fine Leather | SD, LE

Price group: Grupa cenowa: Preisgruppe: Groupe de prix :	4	leather in front ¹ front tapicerowany skórą ¹ Leder nur auf der Vorderseite ¹ partie avant tapissée de cuir ¹	5	fully upholstered in leather całość tapicerowana skórą Komplett gepolstert in Leder entièrement tapissé de cuir
Composition: Skład: Material: Composition :	100%	pigmented soft grain leather (0.9 - 1.1 mm), dyed through miękka skóra licowa (0,9 - 1,1mm), barwiona weiches Oberleder (0,9 - 1,1mm), durchgefärbt cuir pleine fleur corrigé (épaisseur 0,9 - 1,1 mm), entièrement teinté		
Flammability: Trudnozapałność: Brandschutznormen: Résistance au feu :	EN 1021-1, EN 1021-2			

EN ¹ Fine Leather SD/LE in front, matching Imitation Leather V in back

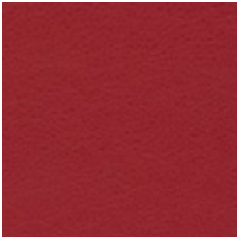
PL ¹ przód krzesła Fine Leather SD/LE, tył Imitation Leather V, w pasujących do siebie kolorach

DE ¹ Vorderseite der Stühle in Fine Leather SD/LE, Rückseite der Stühle in Imitation Leather V in identischen Farben

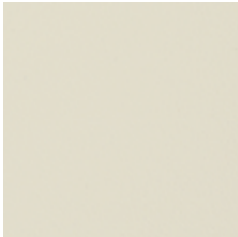
FR ¹ partie avant du siège en Fine Leather SD/LE, partie arrière en Imitation Leather V de la couleur correspondante

Nappa Leather

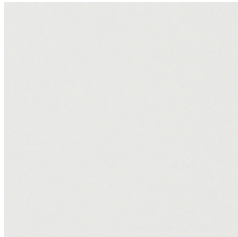
6



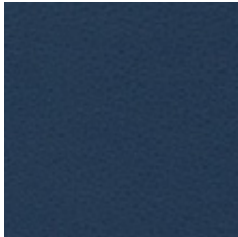
55-63735



55-49261



55-03300



55-29702



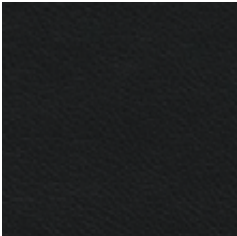
55-72763



55-07338



55-34327



55-00760



Environmentally friendly



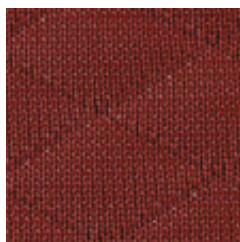
Natural origin

Nappa Leather

Price group: Grupa cenowa: Preisgruppe: Groupe de prix :	6	
Composition: Skład: Material: Composition :	100%	semi aniline leather (1.0 - 1.1mm), natural corrected grain skóra semianilinowa (grubość 1,0 - 1,1mm), naturalne ziarno bez wytłaczania geprägtes Nappaleder, 100% Westeuropäische Bullenhäute. Lederdicke: 1,0 - 1,1mm cuir de semi-aniline (1,0 - 1,1mm), grain naturellement corrigé
Flammability: Trudnozapałność: Brandschutznormen: Résistance au feu :	EN 1021-1, EN 1021-2	

3D pattern fabric

for Denuo (Mesh Plus, UPH/Plastic Plus backrest)



MDP03/FDP03



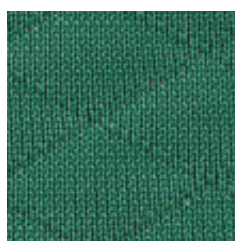
MDP02/FDP02



MDP01/FDP01



MDP04/FDP04



MDP05/FDP05

Composition:		polyester
Skład:		poliester
Material:	100%	Polyester
Composition :		polyester

Weight:	840 g/m ²	MDP
Gramatura:		
Gewicht:		
Poids :	655 g/m ²	FDP

EN woven fabric with 3D diamond pattern dedicated for Mesh Plus and UPH/Plastic Plus backrest (backside of 3D pattern fabric for Mesh Plus version is always black)

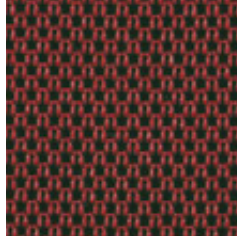
PL wykończenie tkaniny z wzorem 3D romby dedykowane dla oparcia Mesh Plus oraz UPH/Plastic Plus (dla wersji Mesh Plus tkanina na tylnej części oparcia zawsze w kolorze czarnym)

DE 3-D-Strickgewebe mit Rautenmuster für Rückenlehnenvariante Mesh Plus und UPH/Plastic Plus (bei der Rückenlehnenvariante Mesh Plus ist die sichtbare Stoffrückseite immer schwarz)

FR finition tissée à surpiqûres 3D en losange pour les versions de dossier Mesh Plus et UPH/Plastic Plus (pour la version Mesh Plus, le tissu sur la partie arrière du dossier reste toujours noir)

Plain woven fabric

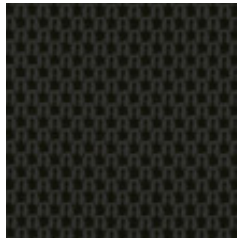
for Denuo (UPH/Plastic backrest)



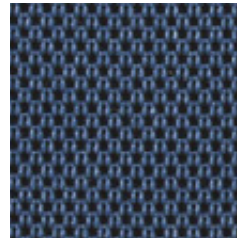
FD03



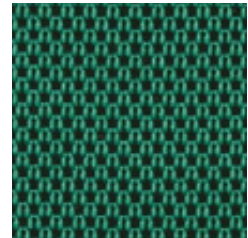
FD02



FD01



FD04



FD05

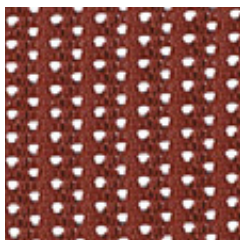
Composition:		polyester
Skład:		poliester
Material:	100%	Polyester
Composition :		polyester

Weight:	
Gramatura:	450 g/m ²
Gewicht:	
Poids :	

- EN** plain woven fabric dedicated for UPH/Plastic backrest
PL wykończenie tkane z wzorem gładkim dedykowane dla oparcia UPH/Plastic
DE glattgewebter Bezugsstoff für Rückenlehnenvariante UPH/Plastic
FR finition tissée uniforme pour la version de dossier UPH/Plastic

Mesh

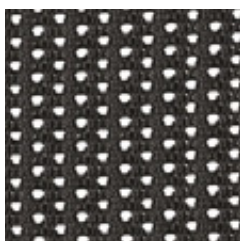
for Denuo (Mesh backrest)



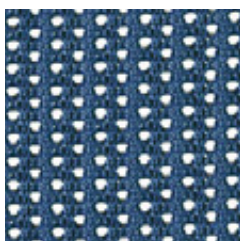
MD03



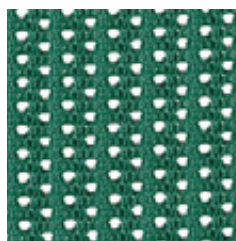
MD02



MD01



MD04



MD05

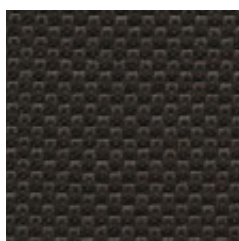
Composition:		polyester
Skład:	100%	poliester
Material:		Polyester
Composition :		polyester

Weight:	
Gramatura:	540 g/m ²
Gewicht:	
Poids :	

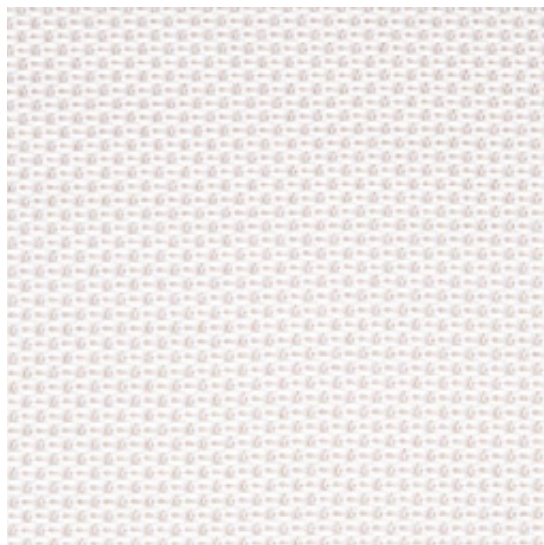
- EN** transparent mesh dedicated for Mesh backrest
- PL** transparentna siatka dedykowana dla oparcia Mesh
- DE** transparentes Netzgewebe für Rückenlehnenvariante Mesh
- FR** résille transparente pour la version de dossier Mesh

Plain woven fabric

for Denuo (seat)



FDS01



FDS02

Composition:		polyester
Skład:		poliester
Material:	100%	Polyester
Composition :		polyester

Weight:	
Gramatura:	560 g/m ²
Gewicht:	
Poids :	

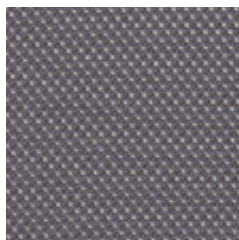
- EN** plain woven fabric dedicated for the seat
- PL** wykończenie tkane z wzorem gładkim dedykowane dla siedziska
- DE** glattgewebter Bezugsstoff für Sitz
- FR** finition tissée uniforme pour assise

Mesh AX

for Xilium



AX01



AX02

Composition: Skład: Material: Composition :	100%	polyester poliester Polyester polyester
Weight: Gramatura: Gewicht: Poids :	700 g/m ²	
Abrasion resistance: Odporność na ścieranie: Scheuerfestigkeit: Résistance à l'abrasion :	≥45 000	Martindale cycles cykli Martindale Touren Martindale cycles Martindales
Colour fastness to light: Odporność barwy na światło: Lichtechtheit: Résistance de la couleur à la lumière :	EN ISO 105-B02 (>6)	
Colour fastness to rubbing: Odporność barwy na tarcie: Reibechtheit: Résistance de la couleur au frottement:	EN ISO 105-X12 (wet: 5 / dry: 4-5)	
Pilling: Odporność na pilling: Pilling: Résistance au boulochage :	EN ISO 12945-2 (5)	
Flammability: Trudnozupalność: Brandschutznormen: Résistance au feu :	EN 1021-1, EN 1021-2	

Mesh WX

for Xilium



WX01

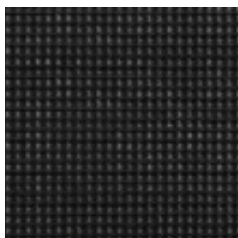


WX02

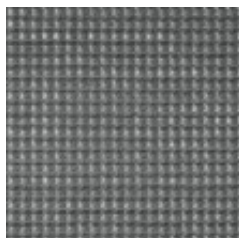
Composition: Skład: Material: Composition :	50,9%	polyelastomer polielastomer Polyelastomer polyelastomer	49,1%	PA6
Weight: Gramatura: Gewicht: Poids :	309 g/m ²			
Abrasion resistance: Odporność na ścieranie: Scheuerfestigkeit: Résistance à l'abrasion :	≥45 000	Martindale cycles cykli Martindale Touren Martindale cycles Martindales		
Colour fastness to light: Odporność barwy na światło: Lichtechtheit: Résistance de la couleur à la lumière :	EN ISO 105-B02 (4)			
Colour fastness to rubbing: Odporność barwy na tarcie: Reibechtheit: Résistance de la couleur au frottement:	EN ISO 105-X12 (wet: 4-5 / dry: 4-5)			
Pilling: Odporność na pilling: Pilling: Résistance au boulochage :	EN ISO 12945-2 (4-5)			
Flammability: Trudnozupalność: Brandschutznormen: Résistance au feu :	EN 1021-1, EN 1021-2			

Mesh MX

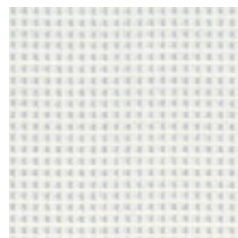
for Xenium



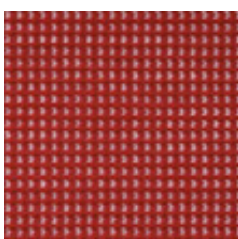
XNSW



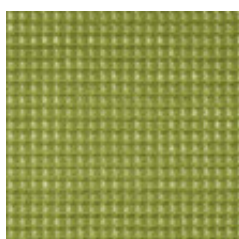
XNGR



XNWE



XNRO

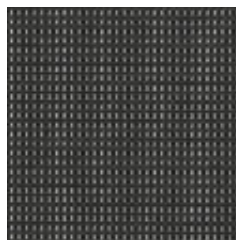


XNGN

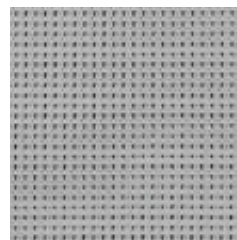
Composition: Skład: Material: Composition :	25%	polyamide poliamid Polyamid polyamide	75%	polyester poliester Polyester polyester
Weight: Gramatura: Gewicht: Poids :	350 g/m ²			
Abrasion resistance: Odporność na ścieranie: Scheuerfestigkeit: Résistance à l'abrasion :	40 000	Martindale cycles cykli Martindale Touren Martindale cycles Martindales		
Colour fastness to rubbing: Odporność barwy na tarcie: Reibechtheit: Résistance de la couleur au frottement:	EN ISO 105-X12 (wet: 4-5 / dry: 4-5)			
Flammability: Trudnozapalność: Brandschutznormen: Résistance au feu :	EN 1021-1			

Mesh MF

for Navigo



MF01



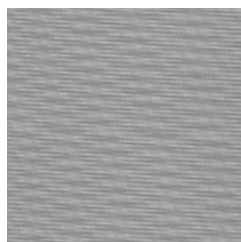
MF02

Composition: Skład: Material: Composition :	100%	polyester poliester Polyester polyester
Weight: Gramatura: Gewicht: Poids :	350 g/m ²	
Abrasion resistance: Odporność na ścieranie: Scheuerfestigkeit: Résistance à l'abrasion :	≥80 000	Martindale cycles cykli Martindale Touren Martindale cycles Martindales
Colour fastness to light: Odporność barwy na światło: Lichtechtheit: Résistance de la couleur à la lumière :	EN ISO 105-B02 (6)	
Colour fastness to rubbing: Odporność barwy na tarcie: Reibechtheit: Résistance de la couleur au frottement:	EN ISO 105-X12 (wet: 4-5 / dry: 4-5)	
Pilling: Odporność na pilling: Pilling: Résistance au boulochage :	EN ISO 12945-2 (5)	
Flammability: Trudnozupalność: Brandschutznormen: Résistance au feu :	EN 1021-1, EN 1021-2	
Other: Inne: Sonstiges: Autres :	Oeko-Tex Standard 100 certificate	

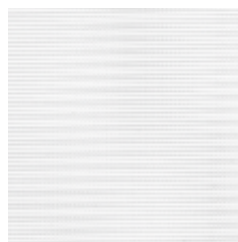
Mesh OP



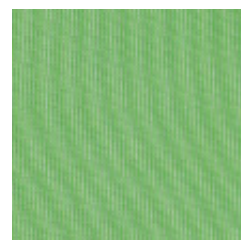
OP24N



OP25



OP20



OP26

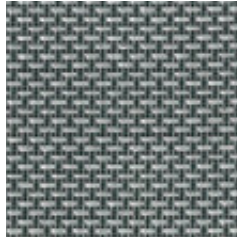
Composition:		polyester
Skład:	100%	poliester
Material:		Polyester
Composition :		polyester
Weight:		
Gramatura:	280 g/m ²	
Gewicht:		
Poids :		
Abrasion resistance:		Martindale cycles
Odporność na ścieranie:	60 000	cykli Martindale
Scheuerfestigkeit:		Touren Martindale
Résistance à l'abrasion :		cycles Martindales
Flammability:		
Trudnozupalność:	EN 1021-1, EN 1021-2 (OP24N only)	
Brandschutznormen:		
Résistance au feu :		

EN for selected chairs, details in price lists and finishes matrix
PL do wybranych krzeseł, szczegóły w cennikach oraz matrixie wykończeń
DE für ausgewählte Stühle, Details in den Preislisten und der Finishes Matrix
FR uniquement aux sélectionnés sièges, pour plus d'informations,
 veuillez vous reporter aux tarifs publics et à la matrice de finitions

Mesh KR.4921



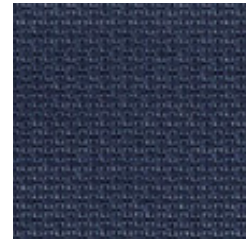
KR.4921.10



KR.4921.16



KR.4921.33



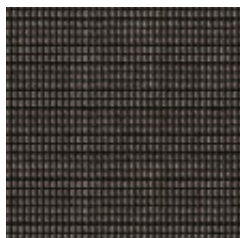
KR.4921.70

Composition: Skład: Material: Composition :	34%	polyamide poliamid Polyamid polyamide	66%	polyester poliester Polyester polyester
Weight: Gramatura: Gewicht: Poids :	240 g/m ²			
Abrasion resistance: Odporność na ścieranie: Scheuerfestigkeit: Résistance à l'abrasion :	200 000	Martindale cycles cykli Martindale Touren Martindale cycles Martindales		
Colour fastness to light: Odporność barwy na światło: Lichtechtheit: Résistance de la couleur à la lumière :	EN ISO 105-B02 (5)			
Colour fastness to rubbing: Odporność barwy na tarcie: Reibechtheit: Résistance de la couleur au frottement:	EN ISO 105-X12 (wet: 4-5 / dry: 4-5)			
Pilling: Odporność na pilling: Pilling: Résistance au boulochage :	EN ISO 12945-2 (5)			
Flammability: Trudnozupalność: Brandschutznormen: Résistance au feu :	EN 1021-1			

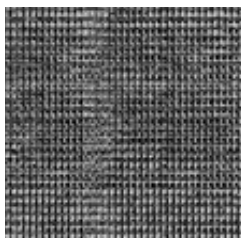
EN for selected chairs, details in price lists and finishes matrix
PL do wybranych krzeseł, szczegóły w cennikach oraz matrixie wykończeń
DE für ausgewählte Stühle, Details in den Preislisten und der Finishes Matrix
FR uniquement aux sélectionnés sièges, pour plus d'informations,
 veuillez vous reporter aux tarifs publics et à la matrice de finitions

Mesh NTS

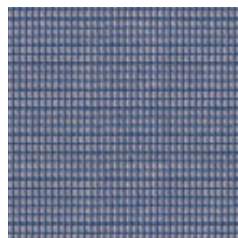
for Sail



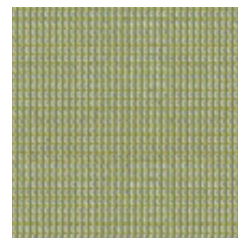
NTS01



NTS02



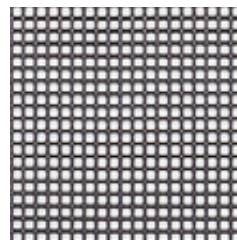
NTS04



NTS06

Composition:		polyester		elastane
Skład:	99%	poliester		elastan
Material:		Polyester	1%	Elasthan
Composition :		polyester		élasthane
Weight:				
Gramatura:	175 g/m ²			
Gewicht:				
Poids :				
Abrasion resistance:		Martindale cycles		
Odporność na ścieranie:	30 000	cykli Martindale		
Scheuerfestigkeit:		Touren Martindale		
Résistance à l'abrasion :		cycles Martindales		
Colour fastness to light:				
Odporność barwy na światło:	EN ISO 105-B02			
Lichtechtheit:	(6)			
Résistance de la couleur à la lumière :				
Colour fastness to rubbing:				
Odporność barwy na tarcie:	EN ISO 105-X12			
Reibechtheit:	(wet: 4-5 / dry: 4-5)			
Résistance de la couleur au frottement:				
Pilling:				
Odporność na pilling:	EN ISO 12945-2			
Pilling:	(5)			
Résistance au boulochage :				
Flammability:				
Trudnozapalność:	EN 1021-1			
Brandschutznormen:				
Résistance au feu :				

Mesh NT



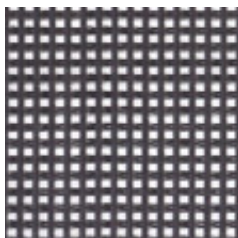
NT01

Composition: Skład: Material: Composition :	100%	polyester poliester Polyester polyester
Weight: Gramatura: Gewicht: Poids :	275 g/m ²	
Abrasion resistance: Odporność na ścieranie: Scheuerfestigkeit: Résistance à l'abrasion :	35 000	Martindale cycles cykli Martindale Touren Martindale cycles Martindales
Colour fastness to light: Odporność barwy na światło: Lichtechtheit: Résistance de la couleur à la lumière :	EN ISO 105-B02 (7)	
Colour fastness to rubbing: Odporność barwy na tarcie: Reibechtheit: Résistance de la couleur au frottement:	EN ISO 105-X12 (wet: 2-3 / dry: 4-5)	
Flammability: Trudnozupalność: Brandschutznormen: Résistance au feu :	EN 1021-1, EN 1021-2	

EN for selected chairs, details in price lists and finishes matrix
PL do wybranych krzeseł, szczegóły w cennikach oraz matrixie wykończeń
DE für ausgewählte Stühle, Details in den Preislisten und der Finishes Matrix
FR uniquement aux sélectionnés sièges, pour plus d'informations,
veuillez vous reporter aux tarifs publics et à la matrice de finitions

Mesh

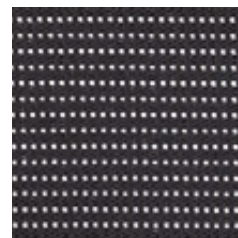
for @-Motion / Net Motion



Composition: Skład: Material: Composition :	100%	polyester poliester Polyester polyester
Weight: Gramatura: Gewicht: Poids :	350 g/m ²	
Abrasion resistance: Odporność na ścieranie: Scheuerfestigkeit: Résistance à l'abrasion :	10 000	Martindale cycles cykli Martindale Touren Martindale cycles Martindales
Colour fastness to light: Odporność barwy na światło: Lichtechtheit: Résistance de la couleur à la lumière :	EN ISO 105-B02 (7)	
Colour fastness to rubbing: Odporność barwy na tarcie: Reibechtheit: Résistance de la couleur au frottement:	EN ISO 105-X12 (wet: 4-5 / dry: 4-5)	
Flammability: Trudnozupalność: Brandschutznormen: Résistance au feu :	EN 1021-1	

Mesh

for Mojito



Composition: Skład: Material: Composition :	100%	polyester poliester Polyester polyester
Weight: Gramatura: Gewicht: Poids :	410 g/m ²	
Abrasion resistance: Odporność na ścieranie: Scheuerfestigkeit: Résistance à l'abrasion :	25 000	Martindale cycles cykli Martindale Touren Martindale cycles Martindales
Colour fastness to light: Odporność barwy na światło: Lichtechtheit: Résistance de la couleur à la lumière :	EN ISO 105-B02 (7)	
Colour fastness to rubbing: Odporność barwy na tarcie: Reibechtheit: Résistance de la couleur au frottement:	EN ISO 105-X12 (wet: 4-5 / dry: 4-5)	
Flammability: Trudnozupalność: Brandschutznormen: Résistance au feu :	EN 1021-1	

Mesh

for Extra



Composition: Skład: Material: Composition :	100%	polyester poliester Polyester polyester
Weight: Gramatura: Gewicht: Poids :	220 g/m ²	
Abrasion resistance: Odporność na ścieranie: Scheuerfestigkeit: Résistance à l'abrasion :	110 000	Martindale cycles cykli Martindale Touren Martindale cycles Martindales
Colour fastness to light: Odporność barwy na światło: Lichtechtheit: Résistance de la couleur à la lumière :	EN ISO 105-B02 (6)	
Colour fastness to rubbing: Odporność barwy na tarcie: Reibechtheit: Résistance de la couleur au frottement:	EN ISO 105-X12 (wet: 4-5 / dry: 4-5)	
Pilling: Odporność na pilling: Pilling: Résistance au boulochage :	EN ISO 12945-2 (4)	
Flammability: Trudnozapalność: Brandschutznormen: Résistance au feu :	EN 1021-1, EN 1021-2	

Mesh

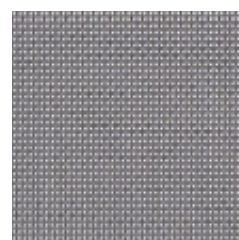
for @-Sense



NS01

Composition:		polyester
Skład:		poliester
Material:	100%	Polyester
Composition :		polyester
Weight:		
Gramatura:	273 g/m ²	
Gewicht:		
Poids :		
Flammability:		
Trudnozapałność:	EN 1021-2	
Brandschutznormen:		
Résistance au feu :		

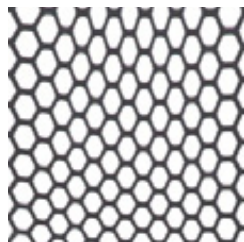
for Z-body, Z-body Trade



Composition:				
Skład:	77%	PVC	23%	PES
Material:				
Composition :				
Weight:				
Gramatura:	560 g/m ²			
Gewicht:				
Poids :				
Abrasion resistance:		Martindale cycles		
Odporność na ścieranie:	100 000	cykli Martindale		
Scheuerfestigkeit:		Touren Martindale		
Résistance à l'abrasion :		cycles Martindales		
Colour fastness to light:				
Odporność barwy na światło:	EN ISO 105-B02			
Lichtechtheit:	(5)			
Résistance de la couleur à la lumière :				
Colour fastness to rubbing:				
Odporność barwy na tarcie:	EN ISO 105-X12			
Reibechtheit:	(wet: 5 / dry: 4)			
Résistance de la couleur au frottement:				

Elasto-net

for YouTEAM™



Black grey SG



Pearl white PW

Composition:	Thermoplastic polyurethane elastomer (TPU)
Skład:	Termoplastyczny elastomer poliuretanowy (TPU)
Material:	Thermoplastisches Polyurethanelastomer (TPU)
Composition :	Élastomère de polyuréthane thermoplastique (TPU)

Density:	
Gęstość:	1,21 kg/dm ³
Dichte:	
Densité :	

Felt

for Formo wall panels, Tepee panels



FC01 Grey



FC02 Light grey

Composition: Skład: Material: Composition :	100%	polyester fiber włókno poliestrowe Polyesterfasern fibre de polyester
Weight: Gramatura: Gewicht: Poids :	1000 g/m ²	for thickness 7,5 mm dla grubości 7,5 mm bei einer Stärke von 7,5 mm pour une épaisseur de 7,5 mm
Flammability: Trudnozapałność: Brandschutznormen: Résistance au feu :	EN 1021-1, EN 1021-2	

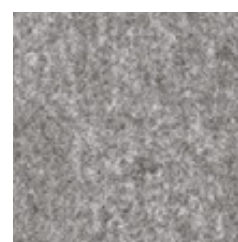


Cigarette
& Match



Recycled
origin

for Formo curtain I

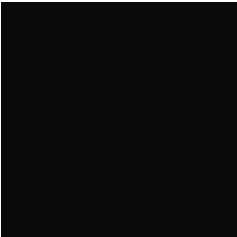


FC02 Light grey

Composition: Skład: Material: Composition :	100%	polyester fiber włókno poliestrowe Polyesterfasern fibre de polyester
Weight: Gramatura: Gewicht: Poids :	650 g/m ²	for thickness 7,5 mm dla grubości 7,5 mm bei einer Stärke von 7,5 mm pour une épaisseur de 7,5 mm

Plastic

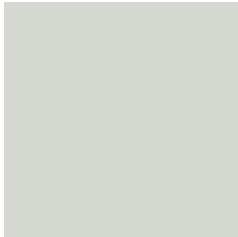
for Amigo, Beta, Cortina, Iso, Polyfold / Polyfold Plus



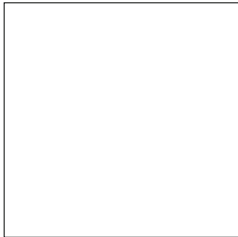
K-02



K-05



K-32



K-01



K-30



K-33



K-36



K-59



K-31

Plastic

for Calado



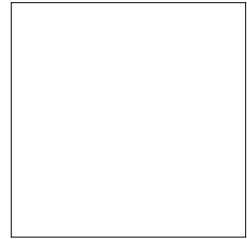
CPP02



CPP30

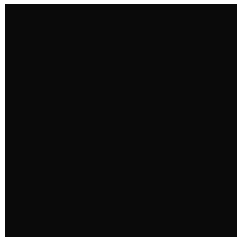


CPP32



CPP01

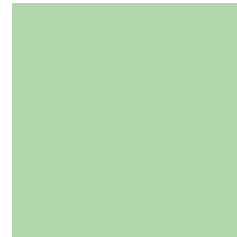
for El Sol



Black



Red



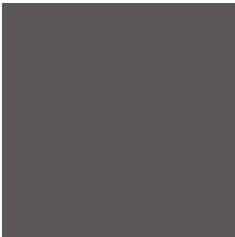
Pistachio



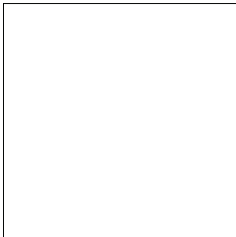
White

Plastic

for Karai II

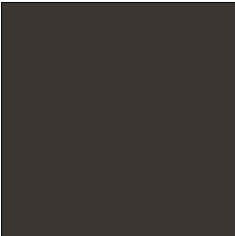


Matt Anthracite

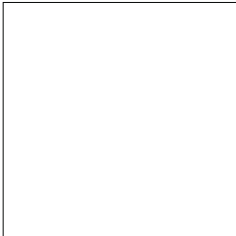


Matt White

for Passu



KS01



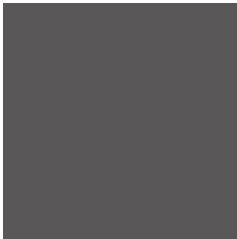
KS13



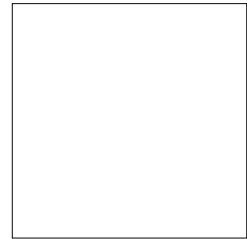
KS11

Plastic

for Fano



Matt Anthracite



Matt White



Matt Purple



Matt Red



Matt Orange

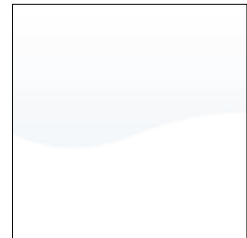


Matt Lime Green

for Fondo PP



Gloss Anthracite



Gloss White



Gloss Purple



Gloss Red



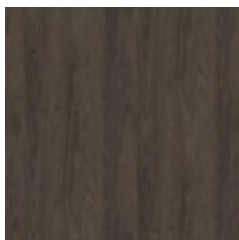
Gloss Orange



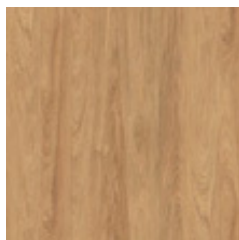
Gloss Lime Green

Laminate

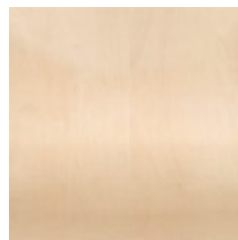
for chairs



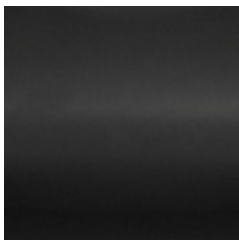
H3732
Brown Hickory



H3730
Natural Hickory



H1733
Mainau Birch



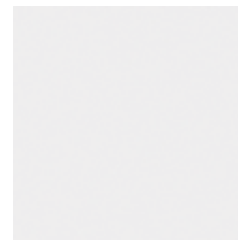
U999
Black



U963
Dark Grey



U773
Dusk Grey



W1000
Premium White



U321
China Red



U504
Tyrolean Blue

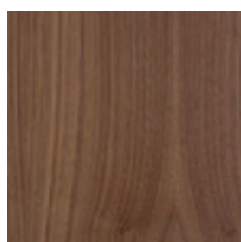


U630
Lime Green

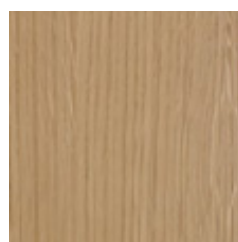
EN for chairs, armrest pads and writing tablets
PL do krzeseł, nakładek podłokietników i pulpityów
DE für Stühle, Armauflagen und Schreibtabelle
FR pour sièges, accoudoirs et tablettes

Veneer

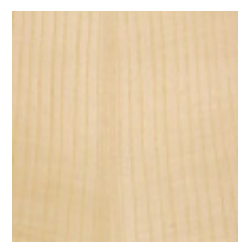
for chairs



2.N07
Eco Nut

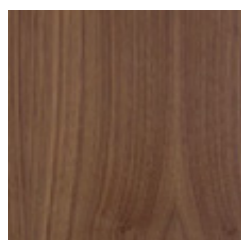


2.D07
Oak

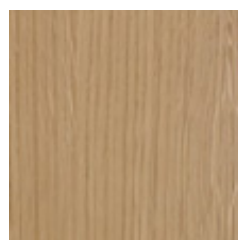


2.J07
Ash

for Madras



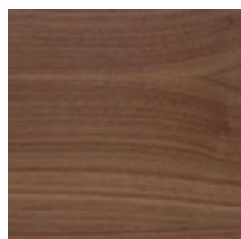
2.N07 FT
Vertical Eco Nut



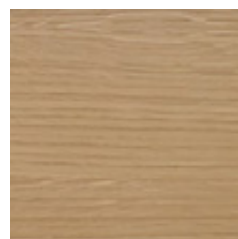
2.D07 FT
Vertical Oak



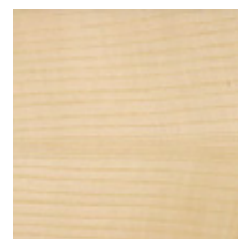
2.J07 FT
Vertical Ash



2.N07 FTR
Horizontal Eco Nut



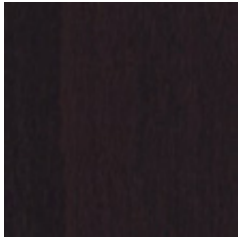
2.D07 FTR
Horizontal Oak



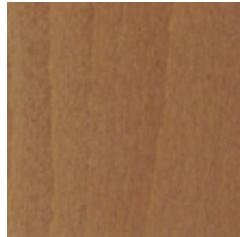
2.J07 FTR
Horizontal Ash

Wood

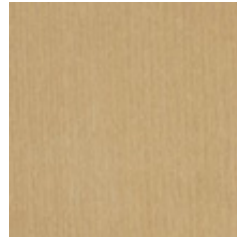
for chairs



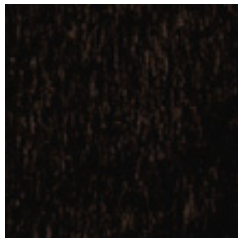
1.032 Colombo



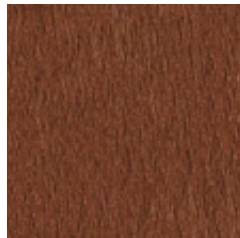
1.076 Havana



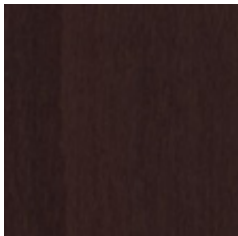
1.040 Alder
BM Caramel Bamboo²



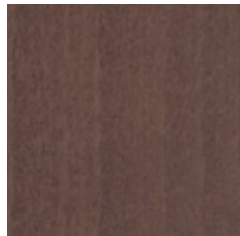
1.043 Black



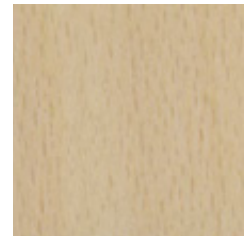
1.023 Palisander



1.033 Wenge
VM Brown Oak²
VP Brown American
Walnut²



1.031 Walnut
VS Natural American
Walnut²



1.007 Beech¹
VT Natural Beech²

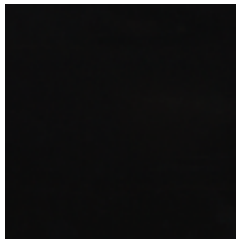
EN water stains for chairs, wood grains visible (beech plywood / solid beech wood)
PL bejce wodne do krzeseł, widoczne słoje drewna (sklejka bukowa / lite drewno bukowe)
DE Beiztöne auf Wasserbasis für Stühle, sichtbare Holzmaserung (Schichtholz Beech / Echtholz Beech)
FR teintes pour bois à base d'eau, pour sièges, veinures de bois visibles (hêtre multiplis / bois massif de hêtre)

EN ¹ not stained, only lacquered
PL ¹ nie barwiony, jedynie lakierowany
DE ¹ nicht gebeizt, nur lackiert
FR ¹ n'est pas teinté, uniquement verni

EN ² colour of veneer for furniture matching wood colour (solid wood / plywood)
PL ² kolor forniru do mebli odpowiada kolorowi drewna (lite drewno / sklejka)
DE ² die Furnierfarben für Möbel sind identisch zu den gebeizten Holzönen (Echtholz / Schichtholz)
FR ² le coloris de la finition ébénisterie pour meubles correspondant à la couleur de bois (bois massif / multiplis)

Wood

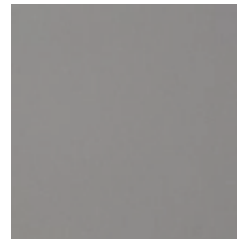
for chairs and furniture elements



2.07Y Black
VO Black Oak¹



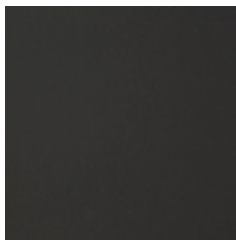
2.06Y Dark Graphite



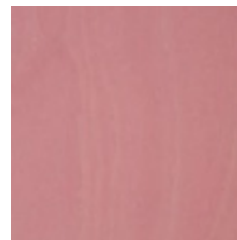
2.06S Slate



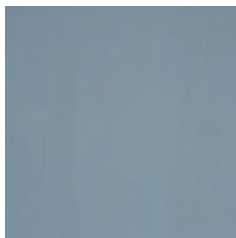
2.09S White



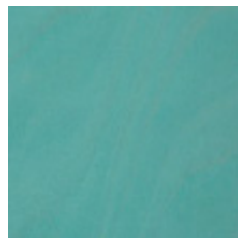
2.06R Beech Grey



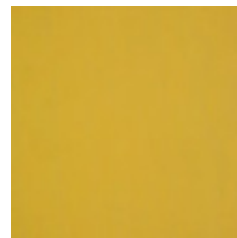
2.09Y Pink



2.09W Light Blue



2.09U Mint



2.09R Saffron



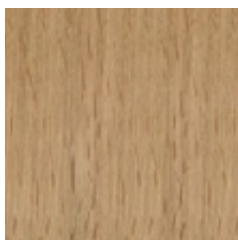
2.09T Orange

EN water stains for chairs and furniture elements, wood grains visible (beech plywood / solid beech wood)
PL bejce wodne do krzeseł i elementów meblowych, widoczne słoje drewna (sklejka bukowa / lite drewno bukowe)
DE Beiztöne auf Wasserbasis für Stühle und Möbel, sichtbare Holzmaserung (Schichtholz Beech / Echtholz Beech)
FR teintés pour bois à base d'eau, pour sièges et éléments de mobilier, veinures de bois visibles (hêtre multiplis / bois massif de hêtre)

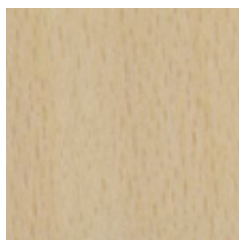
EN ¹ colour of veneer for furniture matching wood colour (solid wood / plywood)
PL ¹ kolor forniru do mebli odpowiada kolorowi drewna (lite drewno / sklejka)
DE ¹ die Furnierfarben für Möbel sind identisch zu den gebeizten Holztonen (Echtholz / Schichtholz)
FR ¹ le coloris de la finition ébénisterie pour meubles correspondant à la couleur de bois (bois massif / multiplis)

Wood

for chairs and furniture



2.D07 (OA) Oak
DM Natural Oak¹

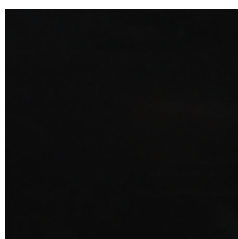


1.007 (OC) Beech
VT Natural Beech¹

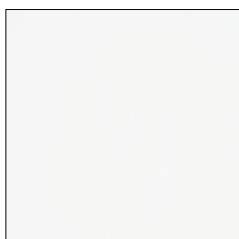
EN clear lacquer for chairs and furniture (solid oak wood / solid beech wood)
PL lakier bezbarwny do krzeseł i mebli (lite drewno dębowe / lite drewno bukowe)
DE Klarlack für Stühle und Möbel (Echtholz Oak / Echtholz Beech)
FR vernis transparent pour sièges et mobilier (bois massif de chêne / bois massif de hêtre)

EN ¹ colour of veneer for furniture matching wood colour (solid wood)
PL ¹ kolor forniru do mebli odpowiada kolorowi drewna (lite drewno)
DE ¹ die Furnierfarben für Möbel sind identisch zu den gebeizten Holzönen (Echtholz)
FR ¹ le coloris de la finition ébénisterie pour meubles correspondant à la couleur de bois (bois massif)

Enamels



3.097 Black Beech¹
3.097 Black²



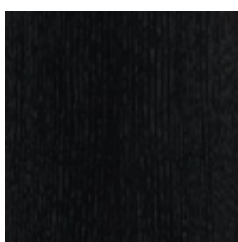
3.093 White Beech¹
3.0A8 White²

EN ¹ enamel colours of wooden handles for cabinets
PL ¹ kolor emalii do drewnianych uchwytów szaf
DE ¹ Lackfarben der Holzgriffe für Schränke
FR ¹ les coloris d'émail pour les poignées de rangements en bois

EN ² for Magnes II table top
PL ² do blatu stolika Magnes II
DE ² für Magnes II Tischplatten
FR ² pour tablettes Magnes II

Veneer

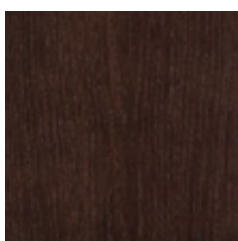
for furniture



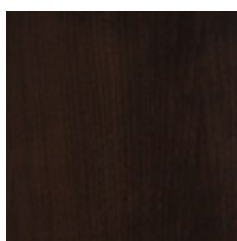
VO Black Oak
2.07Y Black¹



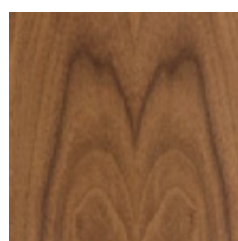
VN White Ash



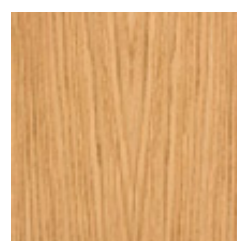
VM Brown Oak
1.033 Wenge¹



**VP Brown
American Walnut**
1.033 Wenge¹



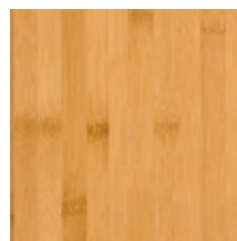
**VS Natural
American Walnut**
1.031 Walnut¹



DM Natural Oak
2.D07 (OA) Oak¹



VT Natural Beech
1.007 (OC) Beech¹



BM Caramel Bamboo
1.040 Alder¹

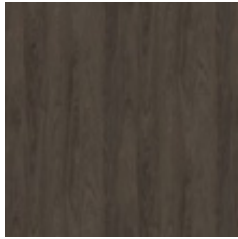
EN ¹ colour of veneer for furniture matching wood colour (solid wood / plywood)

PL ¹ kolor forniru do mebli odpowiada kolorowi drewna (lite drewno / sklejka)

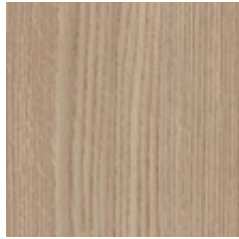
DE ¹ die Furnierfarben für Möbel sind identisch zu den gebeizten Holzönen (Echtholz / Schichtholz)

FR ¹ le coloris de la finition ébénisterie pour meubles correspondant a la couleur de bois (bois massif / multiplis)

Melamine / Laminate



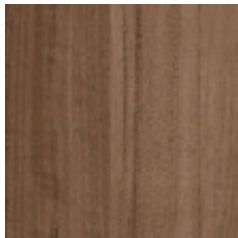
NV Brown Hickory
IJ Brown Hickory¹



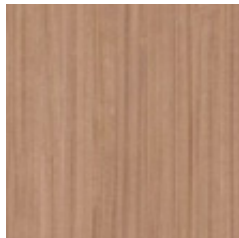
NA Aragon Oak
ID Aragon Oak¹



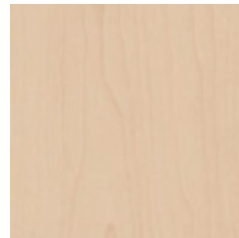
MK Light Grey Concrete
KI Light Grey Concrete¹



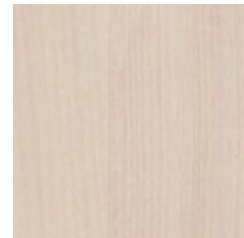
NP Tiepolo Nut



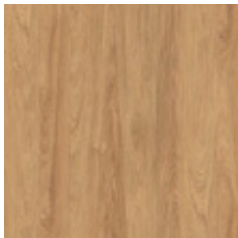
NT Tabac Cherry



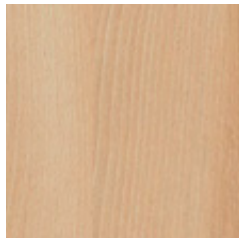
NH Maple
FL Maple¹



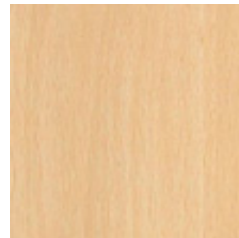
NJ Acacia Light
GN Acacia Light¹



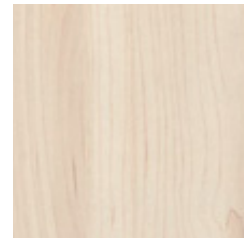
NZ Natural Hickory
HZ Natural Hickory¹



NL Natural Country Beech
II Natural Country Beech¹



NB Beech Bright



NC Champagne Hard Maple
IH Champagne Hard Maple¹

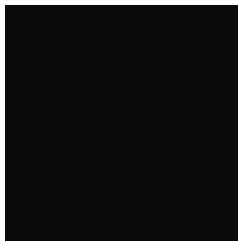
EN for furniture, soft seating elements, table tops and writing tablets
PL do mebli, elementów soft seating, blatów i pulpitów
DE für Möbel, Elemente der Soft Seating Lösungen, Tischplatten und Schreibtäbular
FR pour mobilier, éléments de canapés, plateaux de tables et tablettes écritoires

EN melamine faced chipboard (MFC), class E1
PL płyta meblowa dwustronna melaminowana, klasa E1
DE Beidseitig melaminbeschichtete Spanplatte der Güteklasse E1
FR panneau de particules mélaminé double face, de la classe E1

EN selected colours of melamine available for selected furniture line and its elements; details in price lists and finishes matrix
PL wybrane kolory melamin dostępne dla wybranych linii meblowych i ich elementów; szczegóły w cennikach oraz matrixie wykończeń
DE ausgewählte Melaminfarben sind für bestimmte Möbellinien und dazugehörige Elemente verfügbar; Details in den Preislisten und der Finishes Matrix
FR coloris de mélamine sélectionnés, disponibles pour certains systèmes de mobilier et leurs éléments ; pour plus d'informations, veuillez vous reporter aux tarifs publics et à la matrice de finitions

EN ¹ laminate colour matching melamine colour
PL ¹ kolor laminatu odpowiada kolorowi melaminy
DE ¹ die Melaminoberflächen sind identisch mit genannten Laminatoberflächen
FR ¹ coloris de finitions en stratifié correspondant aux coloris de mélamines

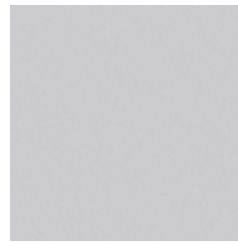
Melamine / Laminate



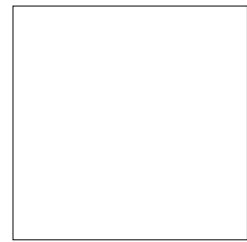
CC Black
DD Black¹



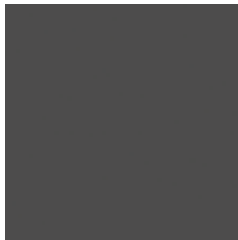
MS Slate
GW Slate¹



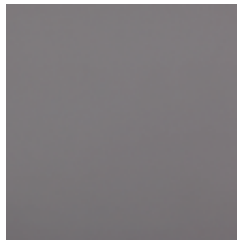
MP Platinum
BW Platinum¹



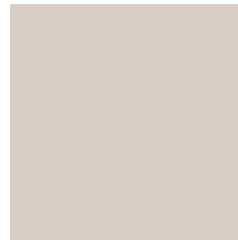
BI White
CA White¹



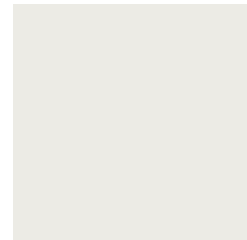
NM Diamond Grey



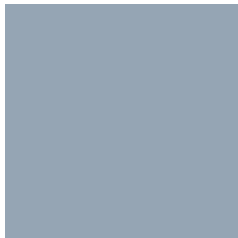
BZ Grey Basalt



NK Cashmere



MB White Grey
FN White Grey¹



NR Denim Blue



NS Fjord Green



NU Blood Orange



NF Saffron

EN for furniture, soft seating elements, table tops and writing tablets
PL do mebli, elementów soft seating, blatów i pulpitów
DE für Möbel, Elemente der Soft Seating Lösungen, Tischplatten und Schreibtäbular
FR pour mobilier, éléments de canapés, plateaux de tables et tablettes écritaires

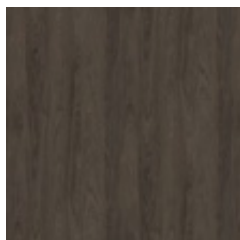
EN melamine faced chipboard (MFC), class E1
PL płyta meblowa dwustronnie melaminowana, klasa E1
DE Beidseitig melaminbeschichtete Spanplatte der Güteklasse E1
FR panneau de particules mélaminé double face, de la classe E1

EN selected colours of melamine available for selected furniture line and its elements; details in price lists and finishes matrix
PL wybrane kolory melamin dostępne dla wybranych linii meblowych i ich elementów; szczegóły w cennikach oraz matrixie wykończeń
DE ausgewählte Melaminfarben sind für bestimmte Möbellinien und dazugehörige Elemente verfügbar;
 Details in den Preislisten und der Finishes Matrix
FR coloris de mélamine sélectionnés, disponibles pour certains systèmes de mobilier et leurs éléments ;
 pour plus d'informations, veuillez vous reporter aux tarifs publics et à la matrice de finitions

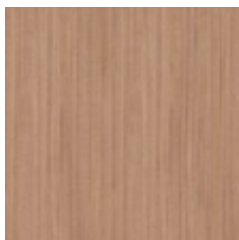
EN ¹ laminate colour matching melamine colour
PL ¹ kolor laminatu odpowiada kolorowi melaminy
DE ¹ die Melaminoberflächen sind identisch mit genannten Laminatoberflächen
FR ¹ coloris de finitions en stratifié correspondant aux coloris de mélamines

Melamine for table tops

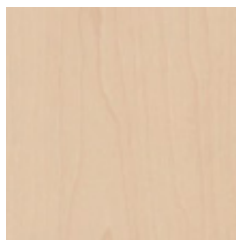
Top 36 mm



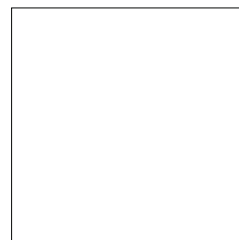
NV Brown Hickory



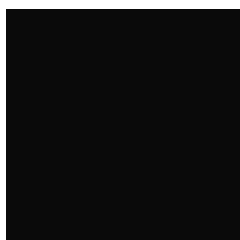
NT Tabac Cherry



NH Maple



BI White



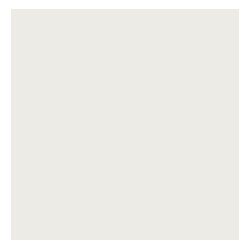
CC Black



MS Slate



MP Platinum

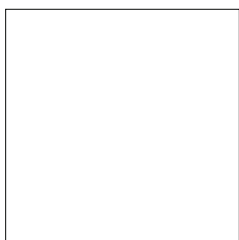


MB White Grey

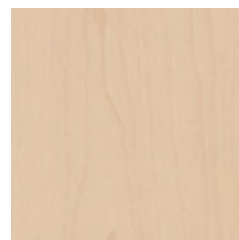
Top 50 mm



CC Black



BI White

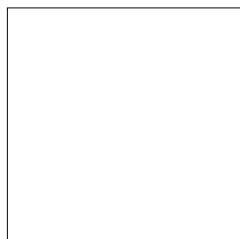


NH Maple

- EN melamine faced chipboard (MFC), class E1
- PL płyta meblowa dwustronnie melaminowana, klasa E1
- DE Beidseitig melaminbeschichtete Spanplatte der Güteklasse E1
- FR panneau de particules mélaminé double face, de la classe E1

Cellular board

Top 25, 50 mm in melamine / laminate

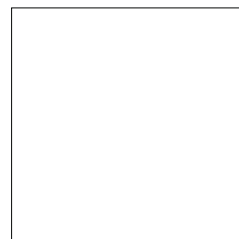


BI/CA White

Top 38 mm in melamine



CC Black



BI White



Environmentally friendly



Light



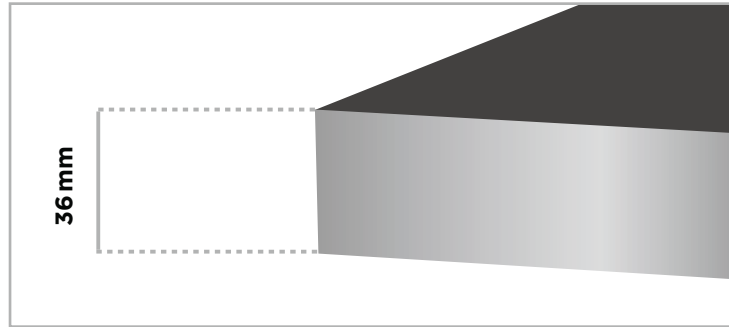
Pressure resistant

Melamine for table tops

Top 36 mm

EN aluminium edge
PL obrzeże aluminiowe
DE umlaufende Aluminiumkante
FR bord en aluminium

EN table top thickness 36 mm
PL grubość blatu 36 mm
DE Stärke der Tischplatte 36 mm
FR épaisseur du plateau 36 mm



Top 50 mm

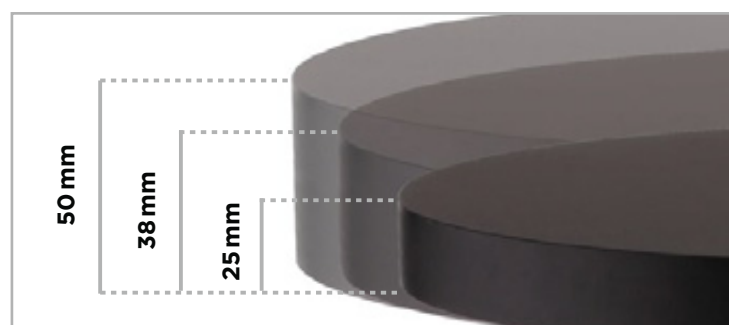
EN table top thickness 50 mm
PL grubość blatu 50 mm
DE Stärke der Tischplatte 50 mm
FR épaisseur du plateau 50 mm



Cellular board

Tops 25, 38, 50 mm

EN top edge made of ABS plastic in the same colour as the top surface
PL obrzeże blatu wykonane z tworzywa ABS w tym samym kolorze co powierzchnia blatu
DE die ABS-Kanten sind in der gleichen Farbe wie die Oberseite verfügbar
FR le chant est réalisé en polymère ABS, toujours de la même couleur que celle du plateau



Laminate / Melamine

for furniture



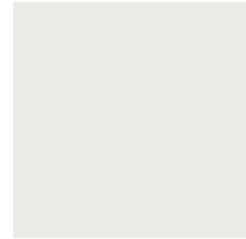
DD Black
CC Black¹



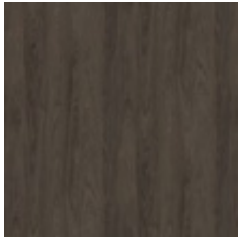
GW Slate
MS Slate¹



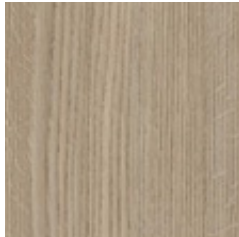
BW Platinum
MP Platinum¹



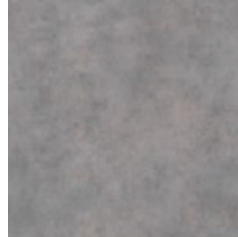
FN White Grey
MB White Grey¹



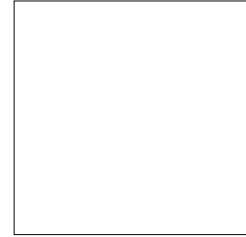
IJ Brown Hickory
NV Brown Hickory¹



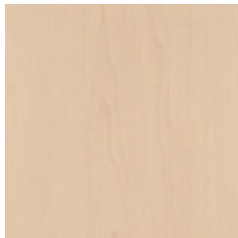
ID Aragon Oak
NA Aragon Oak¹



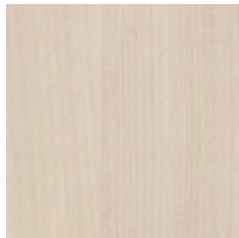
KI Light Grey Concrete
MK Light Grey Concrete¹



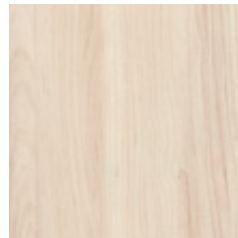
CA White
BI White¹



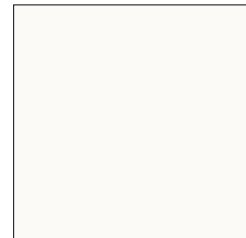
FL Maple
NH Maple¹



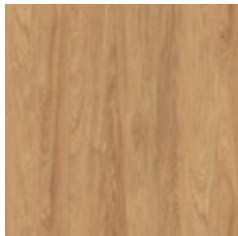
GN Acacia Light
NJ Acacia Light¹



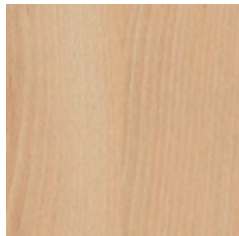
IH Champagne
Hard Maple
NC Champagne
Hard Maple¹



FU White Gloss
(whiteboard)²



HZ Natural Hickory
NZ Natural Hickory¹



II Natural
Country Beech
NL Natural
Country Beech¹

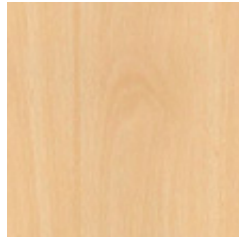
EN applies to selected elements of furniture systems, details in price lists and finishes matrix
PL dotyczy wybranych elementów systemów meblowych, szczegóły w cennikach oraz matrixie wykończeń
DE für ausgewählte Elemente und Möbelsysteme erhältlich; Details in den Preislisten und der Finishes Matrix
FR concerne les éléments sélectionnés de mobilier ; pour plus d'informations, veuillez vous reporter aux tarifs publics et à la matrice de finitions

EN ¹ laminate colour matching melamine colour
PL ¹ kolor laminatu odpowiada kolorowi melaminy
DE ¹ die Melaminoberflächen sind identisch mit genannten Laminatoberflächen
FR ¹ coloris de finitions en stratifié correspondant aux coloris de mélamines

EN ² whiteboard laminate, applicable to Puzlo lockers doors
PL ² laminat suchościerny, dotyczy drzwi szafek Puzlo
DE ² Whiteboard-Laminat, erhältlich für Türen der Puzlo Schließfachschränke
FR ² stratifié tableau blanc, pour façades de casiers Puzlo

Laser edge ABS

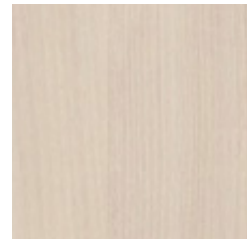
only for selected decors



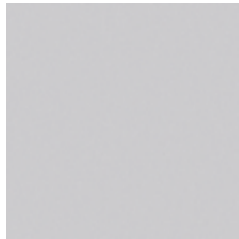
NB Beech Bright



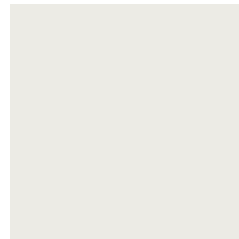
NH Maple



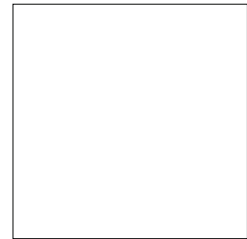
NJ Acacia Light



MP Platinum



MB White Grey



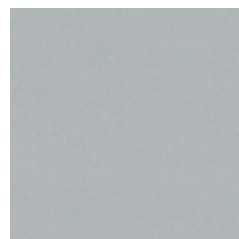
BI White

Lacquered MDF

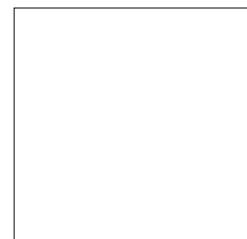
for furniture



RAL 7021
Black FG

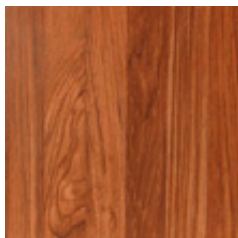


RAL 7012
Grey FS

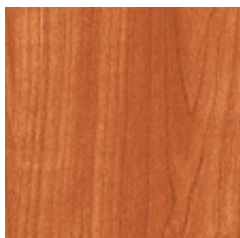


RAL 9003
White FI

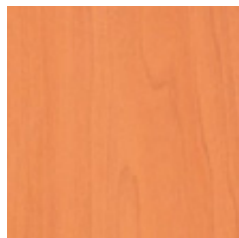
Topalit® table tops



W.009 Teak



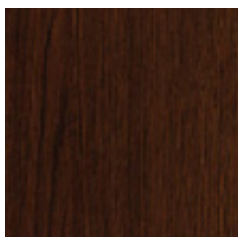
W.011 Red Beech



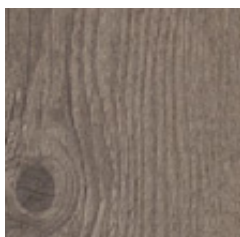
W.077 Cherry



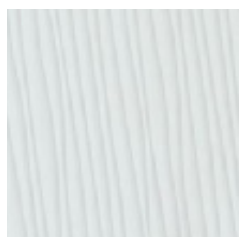
W.241 Oak Light



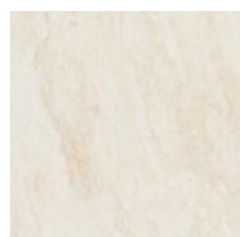
W.106 Wenge



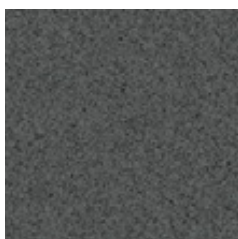
W.214 Timber



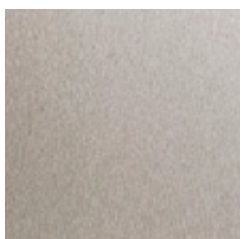
W.137 Seagrass Light



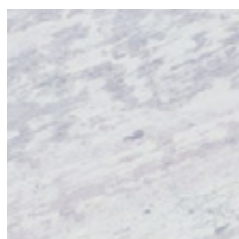
W.034 Travertin



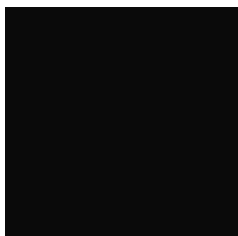
W.074 Anthracite



W.107 Brushed Silver



W.218 Vintage



W.055 Black



W.001 White



EN Topalit® table tops in linear connection do not make ideally flat surface
PL stoły z blatami Topalit® w ułożeniu liniowym nie tworzą idealnie płaskiej powierzchni
DE bei der Reihenverbindung von Tischen mit Topalit®-Platte, kann keine bündige Fläche erreicht werden
FR en alignant les tables aux plateaux Topalit®, nous n'obtenons pas une surface idéalement plate



EN it is not allowed to store tables with Topalit® table tops one on another due to difficulties in drain of rainwater
PL stoły z blatem Topalit® nie mogą być przechowywane jeden na drugim, ponieważ uniemożliwia to swobodny odpływ wody deszczowej
DE die Topalit® Tischplatten sollen nicht aufeinander gelagert werden, da diese Lagerung Regenwasser nicht abfließen lässt
FR il est déconseillé de stocker les tables aux plateaux Topalit® l'une sur l'autre, les surfaces de plateaux en contact.
 Avec une telle configuration, l'évacuation d'eau de pluie n'est pas possible



Cigarette
& Match



Pressure
resistant



Easily
washable



Rainwater
retention



High
temperature



UV rays



Scratches
resistant



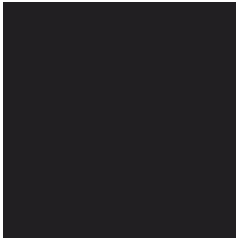
Weather
conditions



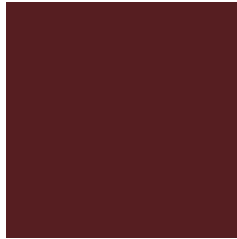
Chipping
resistant

Linoleum

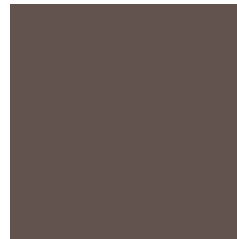
for table tops



JC Charcoal



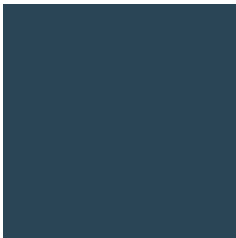
JB Burgundy



JM Mauve



JP Pebble



JS Smokey Blue

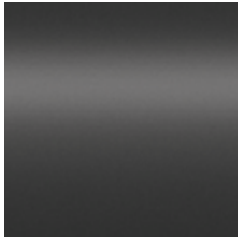
EN linoleum made from natural raw materials: linseed oil, resin, wood flour and natural dyes

PL linoleum wyprodukowane z surowców naturalnych: oleju lnianego, żywicy, mączki drzewnej i naturalnych barwników

DE Linoleum wird aus nachwachsenden Rohstoffen gefertigt: Leinöl, Harz, Holzmehl sowie natürliche Farbpigmente

FR linoléum fabriqué à partir de matières premières naturelles : huile de lin, résine, farine de bois et pigments naturels

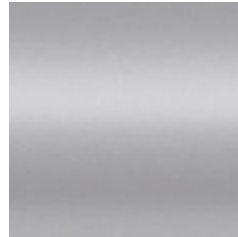
Metal



RAL 9005
Jet black
CZ, BL/BLT, Y, BK



RAL 7016
Anthracite grey
AH



RAL 9006
White aluminium
AL, ALU, WA, X, WK



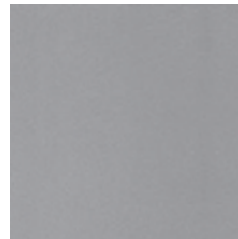
RAL 9003
Signal white
WS



RAL 7021
Black grey
GF



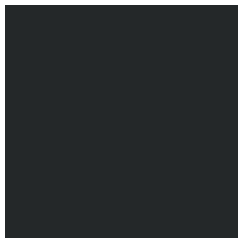
RAL 7015
Slate grey
GY



RAL 9007
Grey aluminium
GA



RAL 9010
Pure white
BI, WH, W



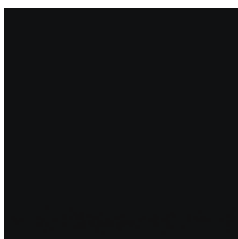
RAL 9011
Graphite black
BLK, CZ



Chrome
CR, Z



RAL 9016
Traffic white
BI, WT/WTT, W



Black Matt Anode
CZ, BLN



Natural Anode
AN

Metal



RAL 7024
Diamond Grey
NM



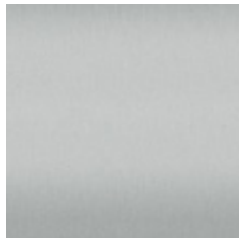
RAL 2001
Blood Orange
NU



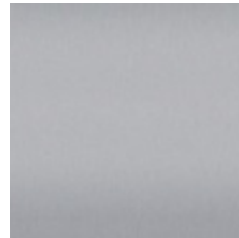
NCS S 1030-Y10R
Saffron
NF



NCS S 2005-Y60R
Cashmere
NK



Platinum Metallic
ALM



Silver Metallic
SLR



RAL 4006
Purple



RAL 3020
Red

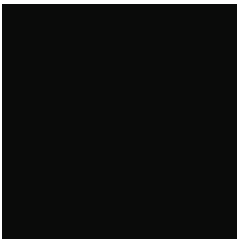


RAL 2003
Orange



RAL 120 80 60
Lime Green

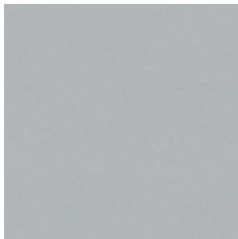
Glass



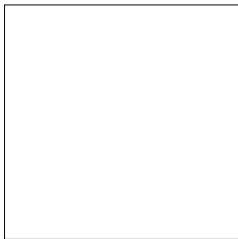
RAL 9005
Black Glass



RAL 7016
Anthracite Glass



RAL 7012
Grey SS



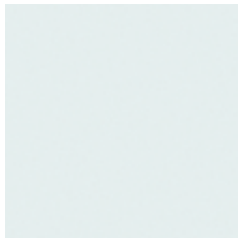
RAL 9003
White Glass, White SI



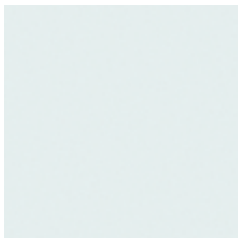
RAL 7021
Black SG



Graphite Glass



Satino White ST



Matt Glass



Transparent Glass

- EN** For more information please see Nowy Styl price lists and finishes matrix with upholsteries and other finishes availability for the particular product.
- PL** Więcej informacji znajduje się w cennikach i matrixie wykończeń Nowy Styl wraz z dostępnością tapicerek i innych wykończeń dla poszczególnych produktów.
- DE** Weitere Informationen zu Oberflächen und Stoffen und deren Verfügbarkeit je Produktlinie sind in den Preislisten sowie in der Finishes Matrix zu finden.
- FR** Pour plus d'informations, veuillez vous reporter aux tarifs publics Nowy Styl et à la matrice de finitions indiquant la disponibilité des tissus et d'autres finitions pour les produits particuliers.

© Copyright 2020 Nowy Styl Sp. z o.o.

Nowy Styl Sp. z o.o. reserves the right to change the constructional features and finishes of products.

- | Nowy Styl Sp. z o.o. zastrzega sobie prawo do zmian konstrukcyjnych produktów oraz zmian wykończeń.
- | Die Nowy Styl Sp. z o.o. behält sich das Recht vor, technische Änderungen und Anpassungen der Stoff- und Oberflächenauswahl vorzunehmen.
- | Nowy Styl Sp. z o.o. se réserve le droit de modifier les caractéristiques de construction et les finitions de ses produits.

Note: Colours and patterns illustrated here may vary from the originals.

- | Uwaga: Prezentowane kolory wykończeń mogą różnić się od oryginałów.
- | Wichtiger Hinweis: Die im Druck dargestellten Farben können von den Originalfarben abweichen.
- | Attention : Les coloris réels peuvent légèrement différer des coloris présents dans ce document.

Publications of Nowy Styl Sp. z o.o. Brands and trademarks used herein are the property of NSG TM Sp. z o.o.



ELCOND
ENGINEERING

PISARNIŠKO POHIŠTVO

www.elcond.si

01/583 73 73

