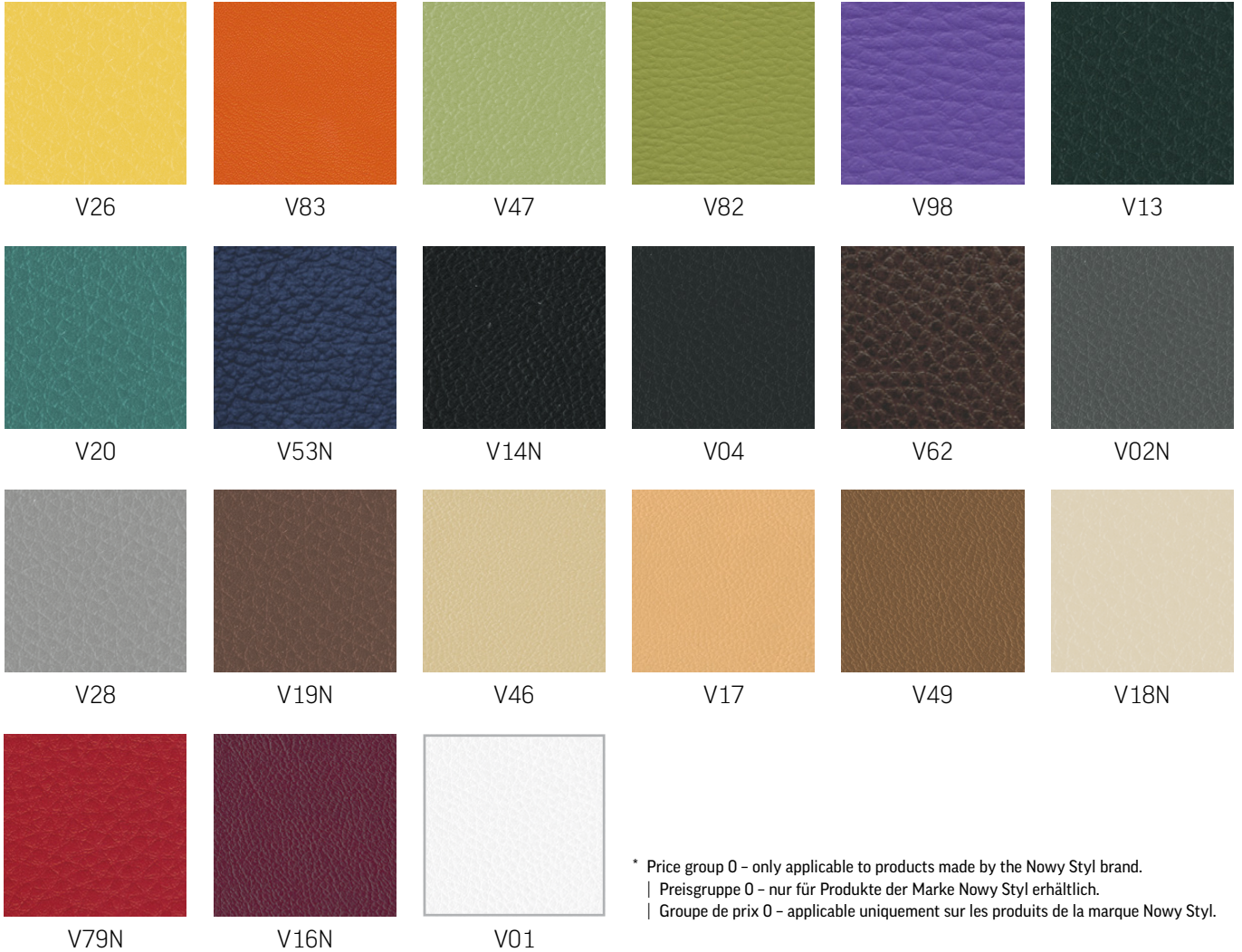


V | Imitation leather

PRICE GROUP | PREISGRUPPE | GROUPE DE PRIX

0*



* Price group 0 - only applicable to products made by the Nowy Styl brand.
 | Preisgruppe 0 - nur für Produkte der Marke Nowy Styl erhältlich.
 | Groupe de prix 0 - applicable uniquement sur les produits de la marque Nowy Styl.

Composition:

100% PVC coated polyester

Weight:460 g/m²**Abrasion resistance:**

≥30 000 Martindale cycles

Flammability:applies to colours marked with the N symbol:
EN 1021-1, EN 1021-2, BS 5852-1**Other:**

easy to keep clean

Material:

100% PVC-beschichtetes Polyestergewebe

Gewicht:460 g/m²**Scheuerfestigkeit:**

≥30 000 Touren Martindale

Brandschutznormen:betrifft die Farben mit "N" Kennzeichnung:
EN 1021-1, EN 1021-2, BS 5852-1**Sonstiges:**

einfach zu reinigen

Composition :

100% polyester enduit PVC

Poids :460 g/m²**Résistance à l'abrasion :**

≥30 000 Cycles Martindales

Résistance au feu :Coloris marqués N sont non-inflammables :
EN 1021-1, EN 1021-2, BS 5852-1**Autres :**

facile à nettoyer

EF | Oban

PRICE GROUP | PREISGRUPPE | GROUPE DE PRIX

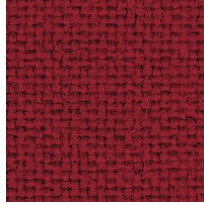
1



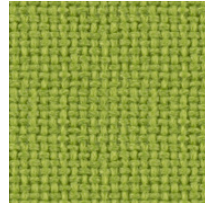
EF808



EF076



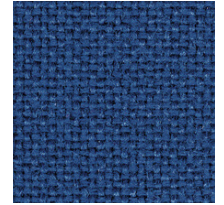
EF037



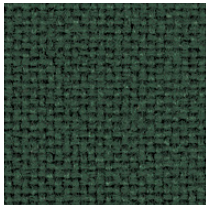
EF046



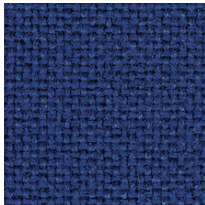
EF810



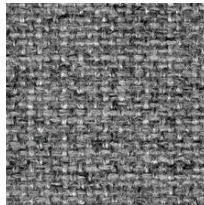
EF078



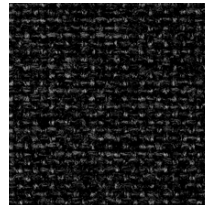
EF069



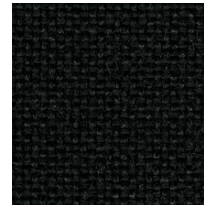
EF010



EF031



EF002



EF019

* Oban - only applicable to products made by the Nowy Styl brand.
 | Oban - nur für Produkte der Marke Nowy Styl erhältlich.
 | Oban - applicable uniquement sur les produits de la marque Nowy Styl.

Composition:
 100% polypropylene
Weight:
 230 g/m²
Abrasion resistance:
 EN 14465 grade A
Flammability:
 EN 1021-1

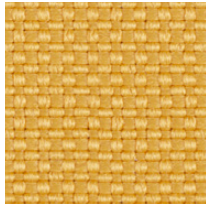
Material:
 100% Polypropylen
Gewicht:
 230 g/m²
Scheuerfestigkeit:
 EN 14465 grade A
Brandschutznormen:
 EN 1021-1

Composition :
 100% polypropylène
Poids :
 230 g/m²
Résistance à l'abrasion :
 EN 14465 grade A
Résistance au feu :
 EN 1021-1

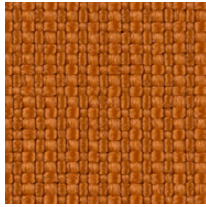
SM | Sempre

PRICE GROUP | PREISGRUPPE | GROUPE DE PRIX

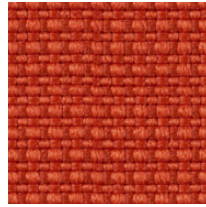
1



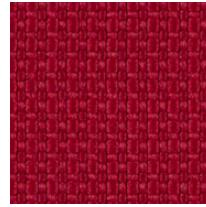
SM11



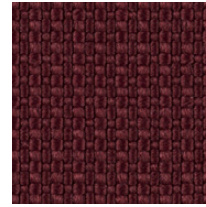
SM10



SM09



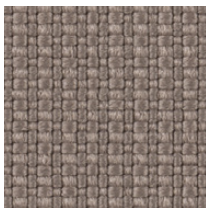
SM12



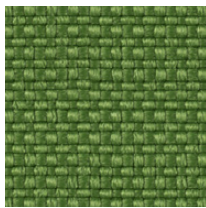
SM06



SM05



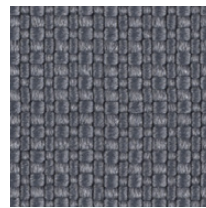
SM04



SM08



SM07



SM03



SM02



SM01

Composition:

100% polyester

Weight:

366 g/m²

Abrasion resistance:

160 000 Martindale cycles

Flammability:

EN 1021-1, EN 1021-2

Material:

100% Polyester

Gewicht:

366 g/m²

Scheuerfestigkeit:

160 000 Touren Martindale

Brandschutznormen:

EN 1021-1, EN 1021-2

Composition :

100% polyester

Poids :

366 g/m²

Résistance à l'abrasion :

160 000 Cycles Martindales

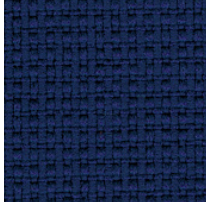
Résistance au feu :

EN 1021-1, EN 1021-2

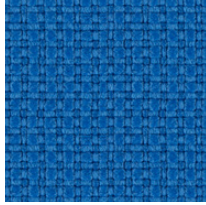
YN | Contract

PRICE GROUP | PREISGRUPPE | GROUPE DE PRIX

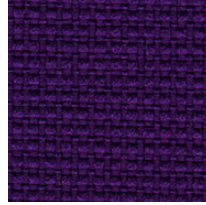
2



YN210



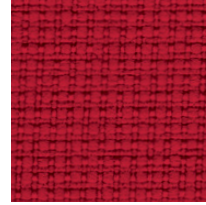
YN202



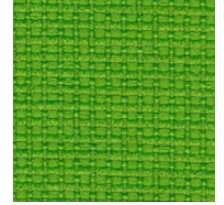
YN204



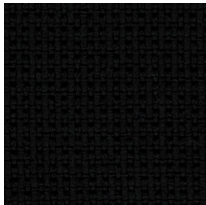
YN206



YN079



YN200



YN009

Composition:

100% recycled polyester. Non metallic dyestuffs

Weight:

320 g/m²

Abrasion resistance:

100 000 Martindale cycles

Flammability:

EN 1021-1, EN 1021-2, BS 7176 low hazard, BS 7176 medium hazard, BS 5852 Crib 5, NF P 503 M1, DIN 4102 B1, UNI 9174 Classe 1

Other:

Environmental: EU Ecolabel certified, recyclable

Material:

100% recyceltes Polyester. Nicht schwermetallhaltige Farbstoffe

Gewicht:

320 g/m²

Scheuerfestigkeit:

100 000 Touren Martindale

Brandschutznormen:

EN 1021-1, EN 1021-2, BS 7176 low hazard, BS 7176 medium hazard, BS 5852 Crib 5, NF P 503 M1, DIN 4102 B1, UNI 9174 Classe 1

Sonstiges:

Umweltfreundlich: EU Ecolabel zertifiziert, recyclingfähig

Composition :

100% polyester recyclé. Teintures non métalliques

Poids :

320 g/m²

Résistance à l'abrasion :

100 000 Cycles Martindales

Résistance au feu :

EN 1021-1, EN 1021-2, BS 7176 low hazard, BS 7176 medium hazard, BS 5852 Crib 5, NF P 503 M1, DIN 4102 B1, UNI 9174 Classe 1

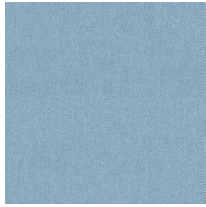
Autres :

Favorable à l'environnement : certifié EU Ecolabel, recyclable

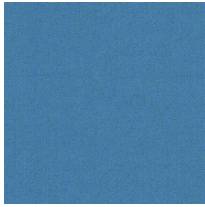
CSE | Era

PRICE GROUP | PREISGRUPPE | GROUPE DE PRIX

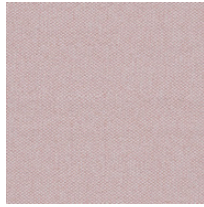
2



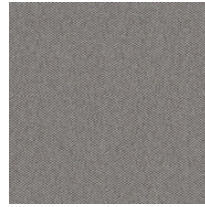
CSE20



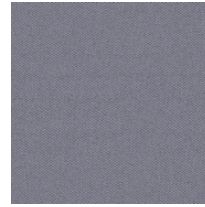
CSE10



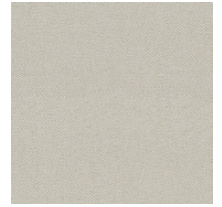
CSE19



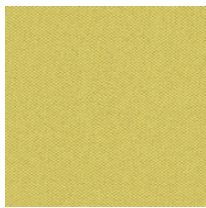
CSE02



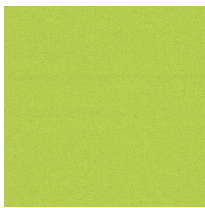
CSE11



CSE01



CSE03



CSE07



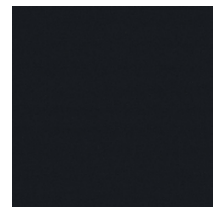
CSE16



CSE13



CSE21



CSE14

Composition:

100% polyester. Non metallic dyestuffs

Weight:

320 g/m²

Abrasion resistance:

≥100 000 Martindale cycles

Flammability:

EN 1021-1, EN 1021-2, BS 7176 low hazard

Material:

100% Polyester. Nicht schwermetallhaltige Farbstoffe

Gewicht:

320 g/m²

Scheuerfestigkeit:

≥100 000 Touren Martindale

Brandschutznormen:

EN 1021-1, EN 1021-2, BS 7176 low hazard

Composition :

100% polyester. Teintures non métalliques

Poids :

320 g/m²

Résistance à l'abrasion :

≥100 000 Cycles Martindales

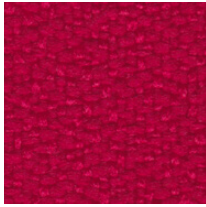
Résistance au feu :

EN 1021-1, EN 1021-2, BS 7176 low hazard

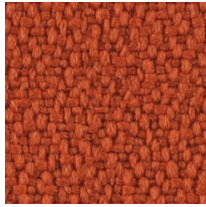
XR | Xtreme

PRICE GROUP | PREISGRUPPE | GROUPE DE PRIX

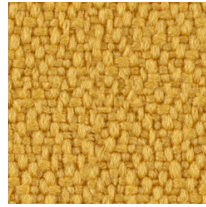
2



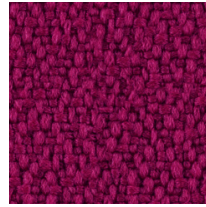
XR079



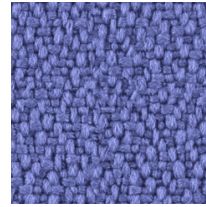
XR076



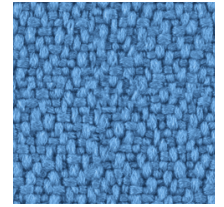
XR072



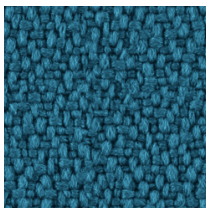
XR101



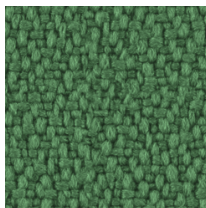
XR069



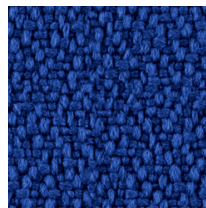
XR073



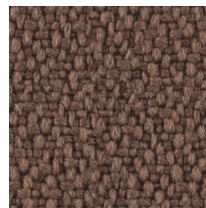
XR160



XR159



XR005



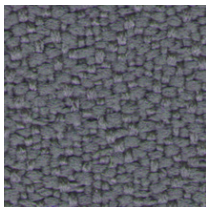
XR091



XR108



XR026



XR081



XR009

Composition:

100% recycled polyester. Non metallic dyestuffs

Weight:310 g/m²**Abrasion resistance:**

100 000 Martindale cycles

Flammability:EN 1021-1, EN 1021-2, BS 7176 low hazard,
BS 7176 medium hazard, BS 5852 Crib 5,
DIN 4102 B1, UNI 9174 Classe 1**Other:**

Environmental: EU Ecolabel certified, recyclable

Material:100% recyceltes Polyester. Nicht schwermetallhaltige
Farbstoffe**Gewicht:**310 g/m²**Scheuerfestigkeit:**

100 000 Touren Martindale

Brandschutznormen:EN 1021-1, EN 1021-2, BS 7176 low hazard,
BS 7176 medium hazard, BS 5852 Crib 5,
DIN 4102 B1, UNI 9174 Classe 1**Sonstige:**Umweltfreundlich: EU Ecolabel zertifiziert,
recyclingfähig**Composition :**

100% polyester recyclé. Teintures non métalliques

Poids :310 g/m²**Résistance à l'abrasion :**

100 000 Cycles Martindales

Résistance au feu :EN 1021-1, EN 1021-2, BS 7176 low hazard,
BS 7176 medium hazard, BS 5852 Crib 5,
DIN 4102 B1, UNI 9174 Classe 1**Autres :**Favorable à l'environnement : certifié EU Ecolabel,
recyclable

VL | Valencia

PRICE GROUP | PREISGRUPPE | GROUPE DE PRIX

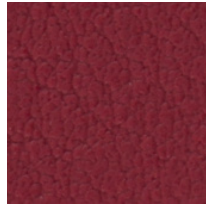
2



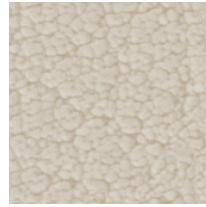
VL6012



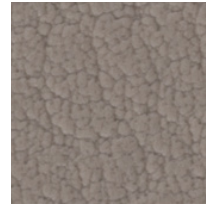
VL6019



VL2074



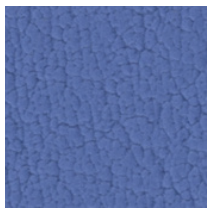
VL1048



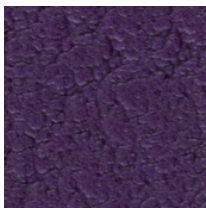
VL0034



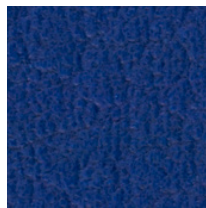
VL0020



VL3001



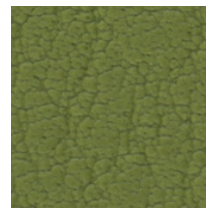
VL7001



VL3067



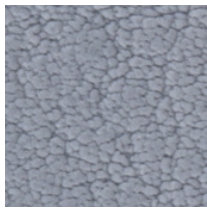
VL5041



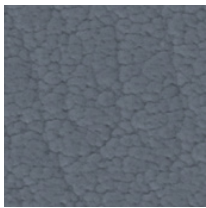
VL5001



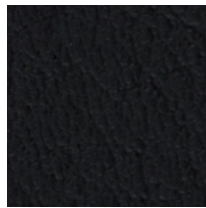
VL4041



VL4045



VL4043



VL9035

Composition:

upper layer: 100% vinyl
bottom layer: 100% Hi-Loft polyester

Weight:

650 g/m²

Abrasion resistance:

300 000 Martindale cycles

Flammability:

EN 1021-1, EN 1021-2, DIN 4102 B2, NF P 92-503
M2, Önorm B 3825, Önorm A 3800-1 Q1

Other:

EN 71-3 Safety of toys (migration of certain elements)
PERMABLOK3® – superior antibacterial, antistain and
antifungal protection

Material:

Deckmaterial: 100% Vinyl
Trägergewebe: 100% Hi-Loft polyester

Gewicht:

650 g/m²

Scheuerfestigkeit:

300 000 Touren Martindale

Brandschutznormen:

EN 1021-1, EN 1021-2, DIN 4102 B2, NF P 92-503
M2, Önorm B 3825, Önorm A 3800-1 Q1

Sonstiges:

EN 71-3 Sicherheit von Spielzeugen (Ausdünstung)
PERMABLOK3® – antimikrobiell ausgerüstet,
chemikalienbeständig und schmutzabweisend

Composition :

Couche supérieure : 100% vinyle
Couche inférieure : 100% polyester Hi-Loft

Poids :

650 g/m²

Résistance à l'abrasion :

300 000 Cycles Martindales

Résistance au feu :

EN 1021-1, EN 1021-2, DIN 4102 B2, NF P 92-503
M2, Önorm B 3825, Önorm A 3800-1 Q1

Autres :

EN 71-3 Sécurité des jouets (migration spécifique
de certains éléments)
PERMABLOK3® – traitement de protection,
antibactérien, antitaches et antifongique

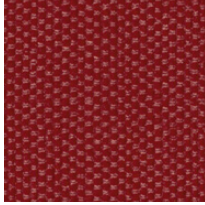
SX | Silvertex

PRICE GROUP | PREISGRUPPE | GROUPE DE PRIX

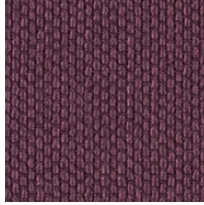
3



SX0009



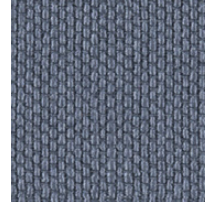
SX2011



SX2016



SX5008



SX4002



SX4001



SX3066



SX4024

Composition:

upper layer: 100% vinyl
bottom layer: 100% Hi-Loft polyester

Weight:

685 g/m²

Abrasion resistance:

300 000 Martindale cycles

Flammability:

EN 1021-1, EN 1021-2, DIN 4102 B1, NF P 92-503
M2, Önorm B 3825, Önorm A 3800-1 Q1

Other:

PERMABLOK3® - superior antibacterial, antistain and antifungal protection
SILVERGUARD® - natural environmentally friendly bacteria fighting defense to inhibit odour and stain causing bacteria (silver ion technology)

Material:

Deckmaterial: 100% Vinyl
Trägergewebe: 100% Hi-Loft Polyester

Gewicht:

685 g/m²

Scheuerfestigkeit:

300 000 Touren Martindale

Brandschutznormen:

EN 1021-1, EN 1021-2, DIN 4102 B1, NF P 92-503
M2, Önorm B 3825, Önorm A 3800-1 Q1

Sonstiges:

PERMABLOK3® - antimikrobiell ausgerüstet, chemikalienbeständig und schmutzabweisend
SILVERGUARD® - verhindert dauerhaft und auf natürliche Weise die Neubildung von Mikroorganismen und die dadurch verursachte Flecken- und Geruchsbildung (Silberionen-Technologie)

Composition :

Couche supérieure : 100% vinyle
Couche inférieure : 100% polyester Hi-Loft

Poids :

685 g/m²

Résistance à l'abrasion :

300 000 Cycles Martindales

Résistance au feu :

EN 1021-1, EN 1021-2, DIN 4102 B1, NF P 92-503
M2, Önorm B 3825, Önorm A 3800-1 Q1

Autres :

PERMABLOK3® - traitement de protection, antibactérien, antitaches et antifongique
SILVERGUARD® - traitement antibactérien (anti odeur et antitaches), respectueux de l'environnement (à base d'ions d'argent)

SP | Split Leather SP front*

PRICE GROUP | PREISGRUPPE | GROUPE DE PRIX

3



SP01



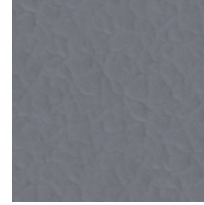
SP12



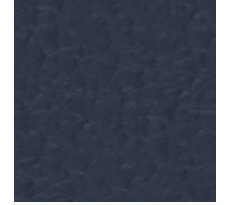
SP11



SP07



SP03



SP06



SP02

* Split Leather SP front – only applicable to products made by the Nowy Styl brand (front of the chair in leather, back in the V imitation leather).
 | Split Leather SP front – nur für Produkte der Marke Nowy Styl erhältlich (Vorderseite der Stühle in Leder, Rückseite der Stühle in Kunstleder „V“).
 | Split Leather SP front – applicable uniquement sur les produits de la marque Nowy Styl (partie avant du dossier en cuir, partie arrière en similicuir V).

Composition:

Split leather (1,1-1,3 mm)

Material:

Spaltleder (1,1-1,3 mm)

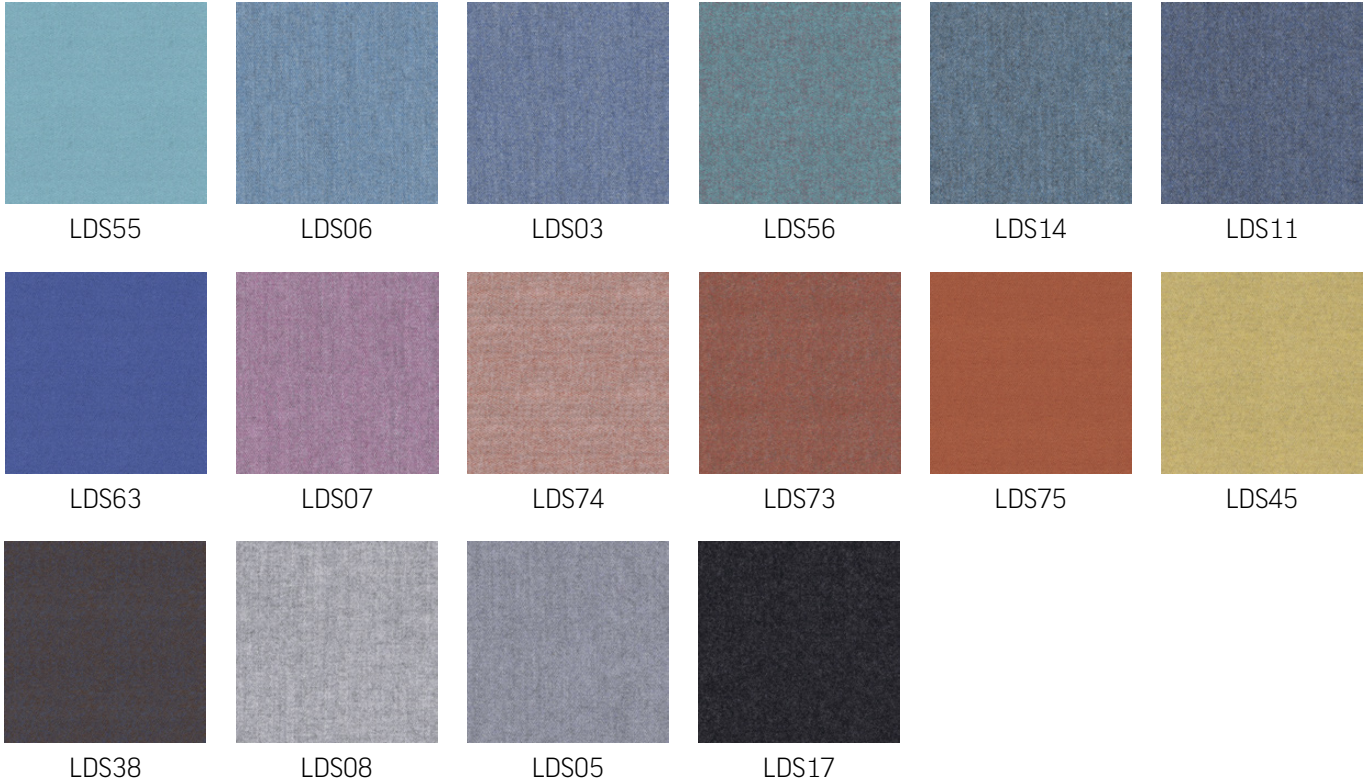
Composition :

Croûte de cuir (1,1-1,3 mm)

LDS | Synergy

PRICE GROUP | PREISGRUPPE | GROUPE DE PRIX

4

**Composition:**

95% wool, 5% polyamide

Weight:400 g/m²**Abrasion resistance:**

100 000 Martindale cycles

Flammability:EN 1021-1, EN 1021-2, BS 7176 low hazard,
UNI 9175 Classe 1.IM, NF D 60-013 AM18,
Önorm B 3825, Önorm A 3800-1 Q1**Material:**

95% Wolle, 5% Polyamid

Gewicht:400 g/m²**Scheuerfestigkeit:**

100 000 Touren Martindale

Brandschutznormen:EN 1021-1, EN 1021-2, BS 7176 low hazard,
UNI 9175 Classe 1.IM, NF D 60-013 AM18,
Önorm B 3825, Önorm A 3800-1 Q1**Composition :**

95% laine, 5% polyamide

Poids :400 g/m²**Résistance à l'abrasion :**

100 000 Cycles Martindales

Résistance au feu :EN 1021-1, EN 1021-2, BS 7176 low hazard,
UNI 9175 Classe 1.IM, NF D 60-013 AM18,
Önorm B 3825, Önorm A 3800-1 Q1

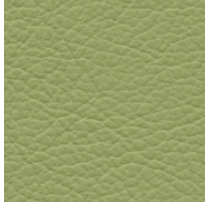
LE | Fine Leather LE front^{*}

PRICE GROUP | PREISGRUPPE | GROUPE DE PRIX

4



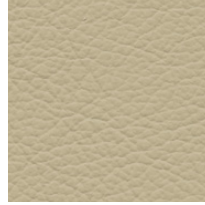
LE14



LE13



LE01



LE06

- * Fine Leather LE front – only applicable to products made by the Nowy Styl brand (front of the chair in leather, back in the V imitation leather).
- | Fine Leather LE front – nur für Produkte der Marke Nowy Styl erhältlich (Vorderseite der Stühle in Leder, Rückseite der Stühle in Kunstleder „V“).
- | Fine Leather LE front – applicable uniquement sur les produits de la marque Nowy Styl (partie avant du dossier en cuir, partie arrière en similicuir V).

Composition:

soft grain leather (0,9–1,1 mm), thoroughly dyed

Material:

weiches Oberleder (0,9–1,1 mm), durchgefärbt

Composition :

Cuir pleine fleur corrigé (épaisseur 0,9–1,1 mm), entièrement teinté

SD | Fine Leather SD front^{*}

PRICE GROUP | PREISGRUPPE | GROUPE DE PRIX

4



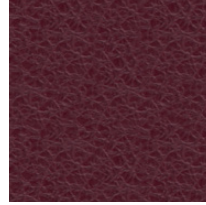
SD06



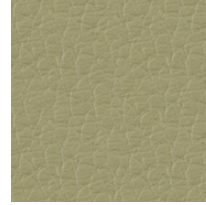
SD16



SD04



SD03



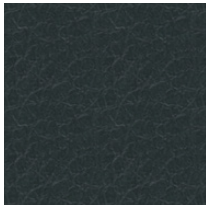
SD07



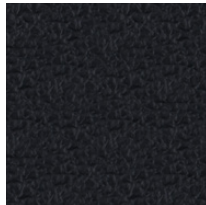
SD09



SD15



SD08



SD01

* Fine Leather SD front – only applicable to products made by the Nowy Styl brand (front of the chair in leather, back in the V imitation leather).
 | Fine Leather SD front – nur für Produkte der Marke Nowy Styl erhältlich (Vorderseite der Stühle in Leder, Rückseite der Stühle in Kunstleder „V“).
 | Fine Leather SD front – applicable uniquement sur les produits de la marque Nowy Styl (partie avant du dossier en cuir, partie arrière en similicuir V).

Composition:

soft grain leather (0,9–1,1 mm), thoroughly dyed

Material:

weiches Oberleder (0,9–1,1 mm), durchgefärbt

Composition :

Cuir pleine fleur corrigé (épaisseur 0,9–1,1 mm), entièrement teinté

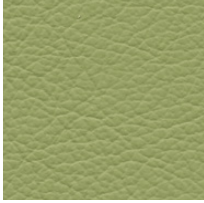
LE | Fine Leather LE

PRICE GROUP | PREISGRUPPE | GROUPE DE PRIX

5



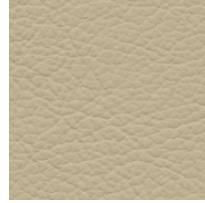
LE14



LE13



LE01



LE06

Composition:

soft grain leather (0,9–1,1 mm), thoroughly dyed

Material:

weiches Oberleder (0,9–1,1 mm), durchgefärbt

Composition :cuir pleine fleur corrigé (épaisseur 0,9–1,1 mm),
entièrement teinté

SD | Fine Leather SD

PRICE GROUP | PREISGRUPPE | GROUPE DE PRIX

5



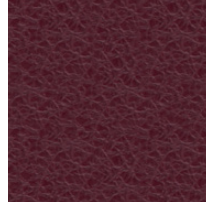
SD06



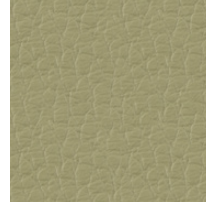
SD16



SD04



SD03



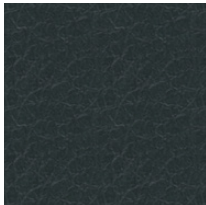
SD07



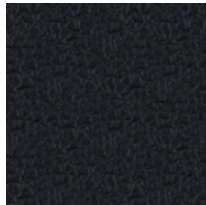
SD09



SD15



SD08



SD01

Composition:

soft grain leather (0,9-1,1 mm), thoroughly dyed

Material:

weiches Oberleder (0,9-1,1 mm), durchgefärbt

Composition :

cuir pleine fleur corrigé (épaisseur 0,9-1,1 mm), entièrement teinté