

Flib

Technical description

1. Conference tables

1.1. Table top

Foldable table tops - made of melamine faced chipboard (MFC), thickness 25 mm, class E1, with 2 mm edge in glue technology as standard, with the following shape options: rectangular, elliptic, half-elliptic, and half-oval.

1.2. Base

Mobile

Legs - made of steel tube Ø 32 mm equipped with handle bars with lock and unlock folding function of table top. Four Ø 65 mm castors, two equipped with brakes.

Beam - made of steel half-oval tube 50 × 25 mm, connected with legs.
 Finish options: powder-coated in alu, white, black or chromium plated.
 Fixed height 750 mm as standard.

Fixed

Legs - made of steel tube Ø 32 mm equipped with handle bars with lock and unlock folding function of table top. Four black plastic glides.

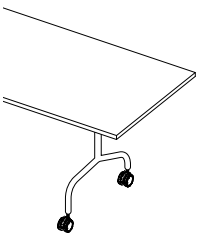
Beam - made of steel half-oval tube 50 × 25 mm, connected with legs.
 Finish options: powder-coated in alu, white, black or chromium plated.

Fixed height 743 mm as standard.

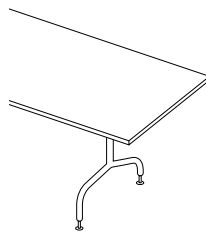
To connect conference tables in order to make an arrangement, dedicated plastic connectors are required - to be ordered separately.
 All tables are unassembled as standard.

1.3. Product range

Bases

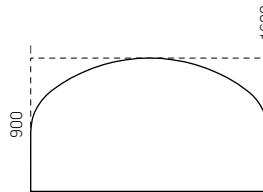
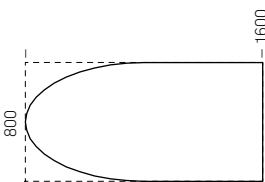
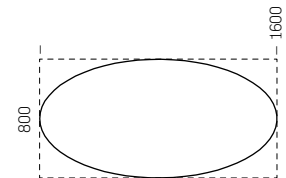
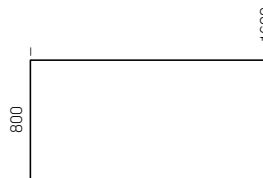


Mobile (M)



Fixed (F)

Table tops



1.4. Sample order

Product code				Finish code	
Product line	Version	Table top shape and dimensions		Table top colour	Base colour
WSF	M	0	2	BI	CR

The following part of code **WSFM02-BICR** identifies product as:
 Flib (**WSF**) mobile conference table (**M**), rectangular table top dimensions 1600 × 800 mm (**02**)

The following part of code **WSFM02-BICR** identifies product as:
 Table top made of melamine faced chipboard (MFC) in white colour (**BI**), chromium plated base (**CR**)

ADJUSTMENT RANGE		
	MOBILE BASE	FIXED BASE
Fixed height	750 mm	743 mm

2. Linking units

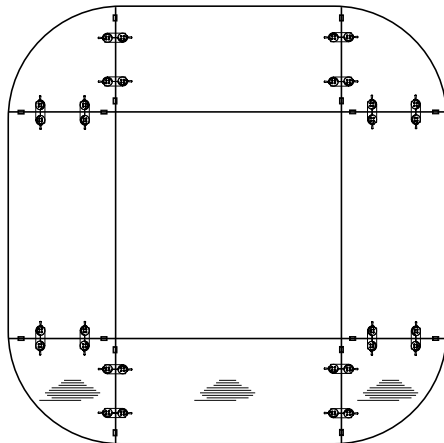
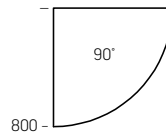
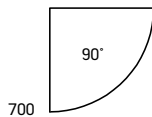
2.1. Table top

Fixed table tops - made of melamine faced chipboard (MFC), thickness 25 mm, class E1, with 2 mm edge in glue technology as standard, left and right version with the following shape - 90° (¼ circle).

Linking units are equipped with four steel chromium plated connectors as standard. To connect linking units with conference tables, dedicated plastic connectors are required - to be ordered separately.

2.3. Product range

Table tops



Left linking unit

Right linking unit

Note: in arrangements including linking units, special attention should be paid to direction of wood grains.

3. Plastic connectors

In order to link two table tops it is required to use:

- minimum 2 pieces of complete connectors (4 separate elements) in case of linking by table top depth,
- minimum 4 pieces of complete connectors (8 separate elements) in case of linking by table top width.

Connectors are used for linking table tops as well as linking units with table tops.

4. Table top finishes combinations

		TABLE TOP FINISH - MELAMINE FACED CHIPBOARD (MFC)									
		BI (G)	MB (4)	MP (P)	BZ (I)	CC (K)	MS (E)	NM (5)	NR (6)	NS (7)	
EDGE FINISH	GLUE TECHNOLOGY	BI (G)	BI	4G	PG	IG	KG	EG	5G	6G	7G
		MB (4)	G4	MB	P4	I4	K4	E4	54	64	74
		MP (P)	GP	4P	MP	IP	KP	EP	5P	6P	7P
		BZ (I)	GI	4I	PI	BZ	KI	EI	5I	6I	7I
		CC (K)	GK	4K	PK	IK	CC	EK	5K	6K	7K
		MS (E)	GE	4E	PE	IE	KE	MS	5E	6E	7E
		NM (5)	G5	45	P5	I5	K5	E5	NM	65	75
		NR (6)	G6	46	P6	I6	K6	E6	56	NR	76
		NS (7)	G7	47	P7	I7	K7	E7	57	67	NS
		NU (8)	G8	48	P8	I8	K8	E8	58	68	78
		NA (X)	GX	4X	PX	IX	KX	EX	5X	6X	7X
		NB (U)	GU	4U	PU	IU	KU	EU	5U	6U	7U
		NC (9)	G9	49	P9	I9	K9	E9	59	69	79
		NH (3)	G3	43	P3	I3	K3	E3	53	63	73
		NJ (2)	G2	42	P2	I2	K2	E2	52	62	72
		NL (0)	G0	40	P0	I0	K0	E0	50	60	70
		NT (R)	GR	4R	PR	IR	KR	ER	5R	6R	7R
		NV (W)	GW	4W	PW	IW	KW	EW	5W	6W	7W
NP (J)	GJ	4J	PJ	IJ	KJ	EJ	5J	6J	7J		
NZ(L)	GL	4L	PL	IL	KL	EL	5L	6L	7L		

The following code **GL** identifies table top colour as: melamine faced chipboard MFC in White colour BI (G) with edge in Natural Hickory NZ (L)

TABLE TOP FINISH - MELAMINE FACED CHIPBOARD (MFC)										
NU (8)	NA (X)	NB (U)	NC (9)	NH (3)	NJ (2)	NL (0)	NT (R)	NV (W)	NP (J)	NZ (L)
8G	XG	UG	9G	3G	2G	0G	RG	WG	JG	LG
84	X4	U4	94	34	24	04	R4	W4	J4	L4
8P	XP	UP	9P	3P	2P	0P	RP	WP	JP	LP
8I	XI	UI	9I	3I	2I	0I	RI	WI	JI	LI
8K	XK	UK	9K	3K	2K	0K	RK	WK	JK	LK
8E	XE	UE	9E	3E	2E	0E	RE	WE	JE	LE
85										
86										
87										
NU										
8X	NA									
8U		NB								
89			NC							
83				NH						
82					NJ					
80						NL				
8R							NT			
8W								NV		
8J									NP	
8L										NZ

5. Technical regulations, certificates and quality marks (for selected product configurations)

Remodex.