

ATHENA **CROSS** chrome



DESCRIPTION

Seat and backrest

- Upholstered seat and backrest with integrated armrests.

Frame

- Chromium plated metal frame.

FINISHES

METAL ELEMENTS (chrome)



CHROME

CONTRACT



YN079 **YN204** **YN200** **YN210** **YN206** **YN009** **YN202**

Composition: 100% polyester

Weight: 320 g/m²

Abrasion Resistance: 100 000 Martindale cycles

Flammability: EN 1021-1, EN 1021-2, BS 7176 low hazard, BS 7176 medium hazard, BS

5852 Crib 5, NF P 503 M1,

DIN 4102 B1, UNI 9174 Classe 1

Other: Recycled EU Flower Certified

SEMPRE



SM01 **SM02** **SM03** **SM04** **SM05** **SM06** **SM07**



SM08 **SM09** **SM10** **SM11** **SM12**

Composition: 100% polyester

Weight: 366 g/m²

Abrasion Resistance: 160 000 Martindale cycles

Flammability: EN 1021-1, EN 1021-2

Other: hygienic certificate by National Hygiene Institute in Poland

VALENCIA



VL0020 **VL0034** **VL1048** **VL2074** **VL3001** **VL3067** **VL4041**



VL4043 **VL4045** **VL5001** **VL5041** **VL6012** **VL6019** **VL7001**



VL9035

Composition: upper layer: 100% vinyl, bottom layer: 100% polyester Hi-Loft

Weight: 650 g/m²

Abrasion Resistance: 300 000 Martindale cycles

Flammability: EN 1021-1, EN 1021-2, DIN 4102 B2, NF P 92-503 M2, Önorm B 3825,

Önorm A 3800-1 Q1

Other: EN 71-3 Safety of toys (migration of certain elements)

PERMABLOK3® - superior antibacterial, antistain and antifungal protection

SILVERTEX



SX0009 Sx2011 SX2016 SX3066 SX4001 SX4002 SX4024



SX5008

Composition: upper layer: 100% vinyl, bottom layer: 100% polyester Hi-Loft

Weight: 685 g/m²

Abrasion Resistance: 300 000 Martindale cycles

Flammability: EN 1021-1, EN 1021-2, DIN 4102 B1, NF P 92-503 M2, Önorm B 3825, Önorm A 3800-1 Q1

Other:

PERMABLOK3® - superior antibacterial, antistain and antifungal protection

SILVERGUARD® - natural environmentally friendly bacteria fighting defense to inhibit odour and stain causing bacteria (silver ion technology)

BLAZER



CUZ02 CUZ09 CUZ1E CUZ1L CUZ2A CUZ18 CUZ26



CUZ28 CUZ30 CUZ89 CUZ1Z CUZ21 CUZ58 CUZ85



CUZ90

Composition: 100% wool

Weight: 460 g/m²

Abrasion Resistance: 50 000 Martindale cycles

Flammability: EN 1021-1&2 (cigarette & match), BS 7176 low hazard, UNI 9175 Classe 1

FINE LEATHER SD



Composition: soft grain leather (0.9 - 1.1 mm), thoroughly dyed (completely dyed)

FINE LEATHER LE



Composition: soft grain leather (0,9 - 1,1 mm), thoroughly dyed (completely dyed)

FINE LEATHER LE FRONT



Composition: soft grain leather (0,9 - 1,1 mm), thoroughly dyed (completely dyed)

FINE LEATHER SD FRONT

Composition: soft grain leather (0.9 - 1.1 mm), thoroughly dyed (completely dyed)

ERA



Composition: 100% polyester

Weight: 320 g/m²

Abrasion Resistance: ≥100 000 Martindale cycles

Flammability: EN 1021-1, EN 1021-2, BS 7176 LOW hazard

Synergy

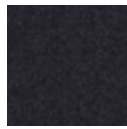




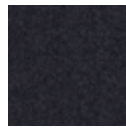
LDS_45



LDS_55



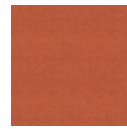
LDS_63



LDS_73



LDS_74



LDS_75



LDS_05



LDS_17

Composition: 95% wolle, 5% polyamid

Weight: 4000 g/m²

Abrasion Resistance: 100 000 Martindale cycles

Flammability: EN 1021-1, EN 1021-2, BS 7176 low hazard, UNI 9175 Classe, 1.IM, NF D 60-013 AM18, Önorm A 3800-1 Q1

All rights reserved 2013 Nowy Styl Group

CONTACT

Nowy Styl Sp. z o.o.
Pużaka 49
38-400 Krosno
Tel. +48 13 43 76 100
Fax +48 13 43 62 732
info@nowystylgroup.com

Export Department

Mięsowicza 6
38-400 Krosno
Poland
Tel. +48 13 43 76 111
export@nowystylgroup.com

Marketing Department

Warszawska 15
32-086 Węgrzce
Poland
Tel. +48 12 63 98 602