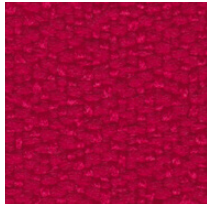


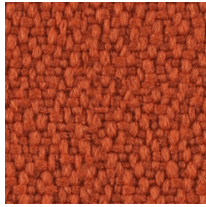
XR | Xtreme

PRICE GROUP | PREISGRUPPE | GROUPE DE PRIX

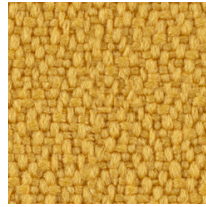
2



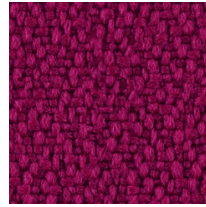
XR079



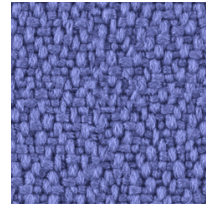
XR076



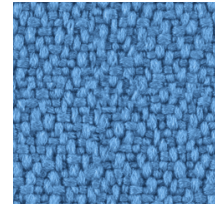
XR072



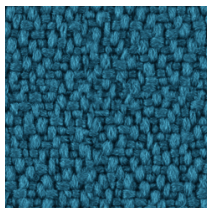
XR101



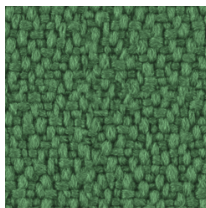
XR069



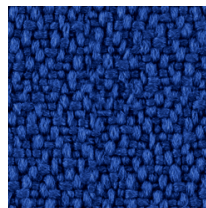
XR073



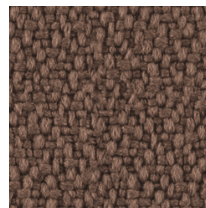
XR160



XR159



XR005



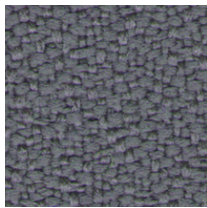
XR091



XR108



XR026



XR081



XR009

Composition:

100% recycled polyester. Non metallic dyestuffs

Weight:310 g/m²**Abrasion resistance:**

100 000 Martindale cycles

Flammability:EN 1021-1, EN 1021-2, BS 7176 low hazard,
BS 7176 medium hazard, BS 5852 Crib 5,
DIN 4102 B1, UNI 9174 Classe 1**Other:**

Environmental: EU Ecolabel certified, recyclable

Material:100% recyceltes Polyester. Nicht schwermetallhaltige
Farbstoffe**Gewicht:**310 g/m²**Scheuerfestigkeit:**

100 000 Touren Martindale

Brandschutznormen:EN 1021-1, EN 1021-2, BS 7176 low hazard,
BS 7176 medium hazard, BS 5852 Crib 5,
DIN 4102 B1, UNI 9174 Classe 1**Sonstige:**Umweltfreundlich: EU Ecolabel zertifiziert,
recyclingfähig**Composition :**

100% polyester recyclé. Teintures non métalliques

Poids :310 g/m²**Résistance à l'abrasion :**

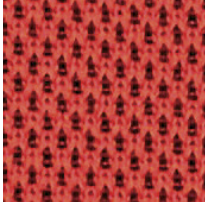
100 000 Cycles Martindales

Résistance au feu :EN 1021-1, EN 1021-2, BS 7176 low hazard,
BS 7176 medium hazard, BS 5852 Crib 5,
DIN 4102 B1, UNI 9174 Classe 1**Autres :**Favorable à l'environnement : certifié EU Ecolabel,
recyclable

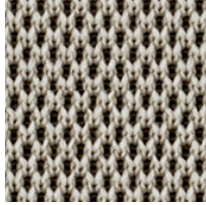
UNY | Nexus

PRICE GROUP | PREISGRUPPE | GROUPE DE PRIX

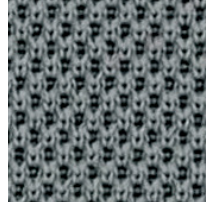
2



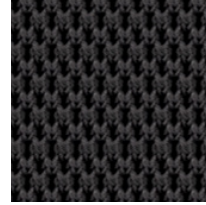
UNY04



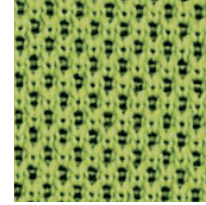
UNY02



UNY01



UNY11



UNY05

Composition:

100% polyester

Weight:

300 g/m²

Abrasion resistance:

100 000 Martindale cycles

Flammability:

EN 1021-1, EN 1021-2, BS 7176 low hazard

Material:

100% Polyester

Gewicht:

300 g/m²

Scheuerfestigkeit:

100 000 Touren Martindale

Brandschutznormen:

EN 1021-1, EN 1021-2, BS 7176 low hazard

Composition :

100% polyester

Poids :

300 g/m²

Résistance à l'abrasion :

100 000 Cycles Martindales

Résistance au feu :

EN 1021-1, EN 1021-2, BS 7176 low hazard

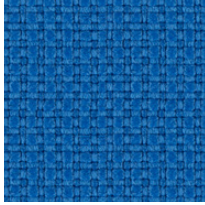
YN | Contract

PRICE GROUP | PREISGRUPPE | GROUPE DE PRIX

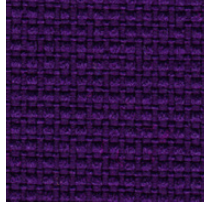
2



YN210



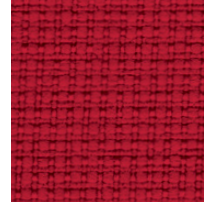
YN202



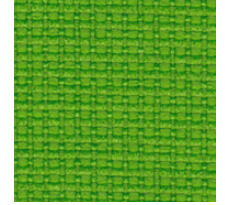
YN204



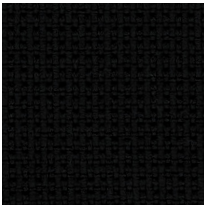
YN206



YN079



YN200



YN009

Composition:

100% recycled polyester. Non metallic dyestuffs

Weight:320 g/m²**Abrasion resistance:**

100 000 Martindale cycles

Flammability:

EN 1021-1, EN 1021-2, BS 7176 low hazard, BS 7176 medium hazard, BS 5852 Crib 5, NF P 503 M1, DIN 4102 B1, UNI 9174 Classe 1

Other:

Environmental: EU Ecolabel certified, recyclable

Material:

100% recyceltes Polyester. Nicht schwermetallhaltige Farbstoffe

Gewicht:320 g/m²**Scheuerfestigkeit:**

100 000 Touren Martindale

Brandschutznormen:

EN 1021-1, EN 1021-2, BS 7176 low hazard, BS 7176 medium hazard, BS 5852 Crib 5, NF P 503 M1, DIN 4102 B1, UNI 9174 Classe 1

Sonstiges:

Umweltfreundlich: EU Ecolabel zertifiziert, recyclingfähig

Composition :

100% polyester recyclé. Teintures non métalliques

Poids :320 g/m²**Résistance à l'abrasion :**

100 000 Cycles Martindales

Résistance au feu :

EN 1021-1, EN 1021-2, BS 7176 low hazard, BS 7176 medium hazard, BS 5852 Crib 5, NF P 503 M1, DIN 4102 B1, UNI 9174 Classe 1

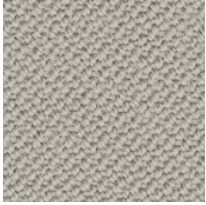
Autres :

Favorable à l'environnement : certifié EU Ecolabel, recyclable

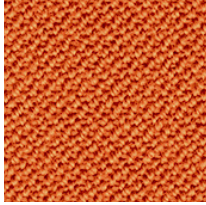
OX | Oxygen

PRICE GROUP | PREISGRUPPE | GROUPE DE PRIX

3



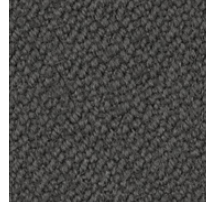
OX039



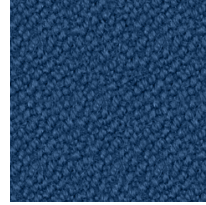
OX035



OX023



OX010



OX007



OX001

Composition:

90% wool, 10% polyamide

Weight:

400 g/m²

Abrasion resistance:

100 000 Martindale cycles

Flammability:

EN 1021-1, EN 1021-2, BS 7176 low hazard,
UNI 9175 Classe 1.IM

Material:

90% Wolle, 10% Polyamide

Gewicht:

400 g/m²

Scheuerfestigkeit:

100 000 Touren Martindale

Brandschutznormen:

EN 1021-1, EN 1021-2, BS 7176 low hazard,
UNI 9175 Classe 1.IM

Composition :

90% laine, 10% polyamide

Poids :

400 g/m²

Résistance à l'abrasion :

100 000 Cycles Martindales

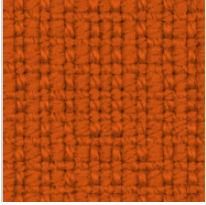
Résistance au feu :

EN 1021-1, EN 1021-2, BS 7176 low hazard,
UNI 9175 Classe 1.IM

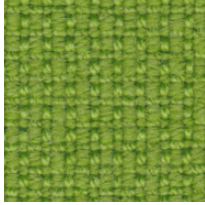
F | Fame

PRICE GROUP | PREISGRUPPE | GROUPE DE PRIX

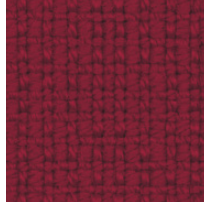
4



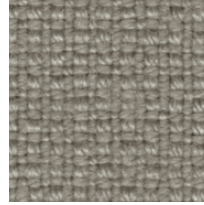
F45



F03



F18



F19



F07



F10

Composition:

95% wool, 5% polyamide

Weight:435 g/m²**Abrasion resistance:**

200 000 Martindale cycles

Flammability:

EN 1021-1, EN 1021-2, BS 5852 source 0, BS 5852 source 1, BS 5852 Crib 5, Calif. Bull. 117E, UNI 9175 Classe 1.IM, NF D 60-013 AM 18, IMO A.652, IMO/MED Certificate

Other:

Environmental: EU Ecolabel certified

Material:

95% Wolle, 5% Polyamide

Gewicht:435 g/m²**Scheuerfestigkeit:**

200 000 Touren Martindale

Brandschutznormen:

EN 1021-1, EN 1021-2, BS 5852 source 0, BS 5852 source 1, BS 5852 Crib 5, Calif. Bull. 117E, UNI 9175 Classe 1.IM, NF D 60-013 AM 18, IMO A.652, IMO/MED Certificate

Sonstiges:

Umweltfreundlich: EU Ecolabel zertifiziert

Composition :

95% laine, 5% polyamide

Poids :435 g/m²**Résistance à l'abrasion :**

200 000 Cycles Martindales

Résistance au feu :

EN 1021-1, EN 1021-2, BS 5852 source 0, BS 5852 source 1, BS 5852 Crib 5, Calif. Bull. 117E, UNI 9175 Classe 1.IM, NF D 60-013 AM 18, IMO A.652, IMO/MED Certificate

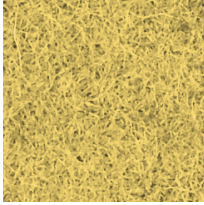
Autres :

Favorable à l'environnement : certifié EU Ecolabel

CUZ | Blazer

PRICE GROUP | PREISGRUPPE | GROUPE DE PRIX

4



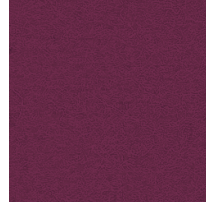
CUZ58



CUZ85



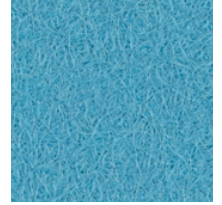
CUZ90



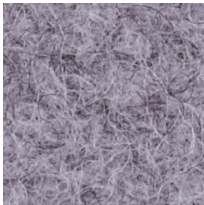
CUZ21



CUZ1Z



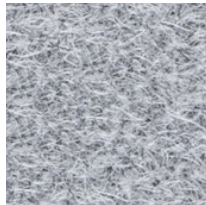
CUZ02



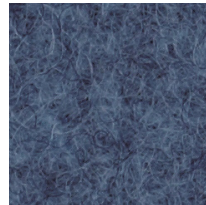
CUZ1S



CUZ28



CUZ1E



CUZ1W



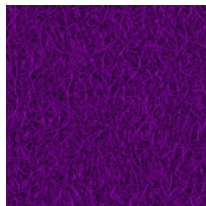
CUZ1Y



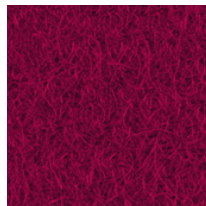
CUZ1L



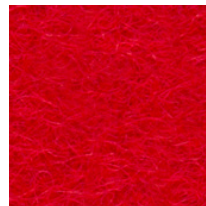
CUZ1P



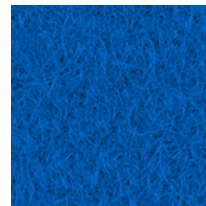
CUZ2A



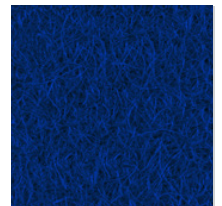
CUZ89



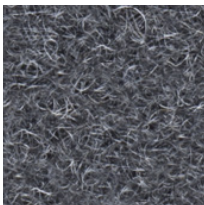
CUZ18



CUZ26



CUZ09



CUZ30



CUZ1R

Composition:

100% virgin wool. Non metallic dyestuffs

Weight:460 g/m²**Abrasion resistance:**

50 000 Martindale cycles

Flammability:EN 1021-1, EN 1021-2, BS 7176 low hazard,
UNI 9175 Classe 1.IM**Other:**Environmental: EU Ecolabel Certified.
Renewable and compostable**Material:**100% Schurwolle. Nicht schwermetallhaltige
Farbstoffe**Gewicht:**460 g/m²**Scheuerfestigkeit:**

50 000 Touren Martindale

Brandschutznormen:EN 1021-1, EN 1021-2, BS 7176 low hazard,
UNI 9175 Classe 1.IM**Sonstiges:**Umweltfreundlich: EU Ecolabel zertifiziert
Erneuerbar und kompostierbar**Composition :**

100% pure laine. Teintures non métalliques

Poids :460 g/m²**Résistance à l'abrasion :**

50 000 Cycles Martindales

Résistance au feu :EN 1021-1, EN 1021-2, BS 7176 low hazard,
UNI 9175 Classe 1.IM**Autres :**Favorable à l'environnement : certifié EU Ecolabel,
recyclable et compostable

LDS | Synergy

PRICE GROUP | PREISGRUPPE | GROUPE DE PRIX

4

**Composition:**

95% wool, 5% polyamide

Weight:400 g/m²**Abrasion resistance:**

100 000 Martindale cycles

Flammability:EN 1021-1, EN 1021-2, BS 7176 low hazard,
UNI 9175 Classe 1.IM, NF D 60-013 AM18,
Önorm B 3825, Önorm A 3800-1 Q1**Material:**

95% Wolle, 5% Polyamid

Gewicht:400 g/m²**Scheuerfestigkeit:**

100 000 Touren Martindale

Brandschutznormen:EN 1021-1, EN 1021-2, BS 7176 low hazard,
UNI 9175 Classe 1.IM, NF D 60-013 AM18,
Önorm B 3825, Önorm A 3800-1 Q1**Composition :**

95% laine, 5% polyamide

Poids :400 g/m²**Résistance à l'abrasion :**

100 000 Cycles Martindales

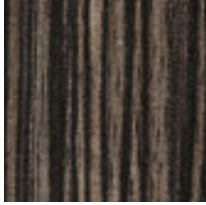
Résistance au feu :EN 1021-1, EN 1021-2, BS 7176 low hazard,
UNI 9175 Classe 1.IM, NF D 60-013 AM18,
Önorm B 3825, Önorm A 3800-1 Q1

Laminate | Laminatoberflächen | Stratifiés

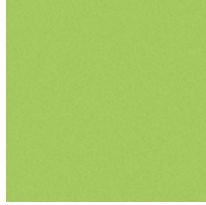
For chairs and writing tables | Nur für Stühle und Schreibtisole | Pour chaises et tablettes écriioires uniquement



H1733
Mainau Birch



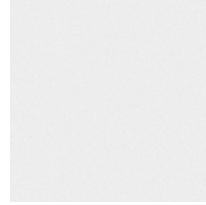
H3005
Grey Beige Zebrano



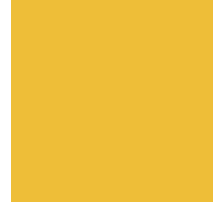
U630
Lime Green



U337
Fuchsia



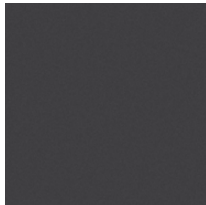
W1000
Premium White



U114
Yellow



U504
Tyrolean Blue



U963
Dark Grey



U321
China Red



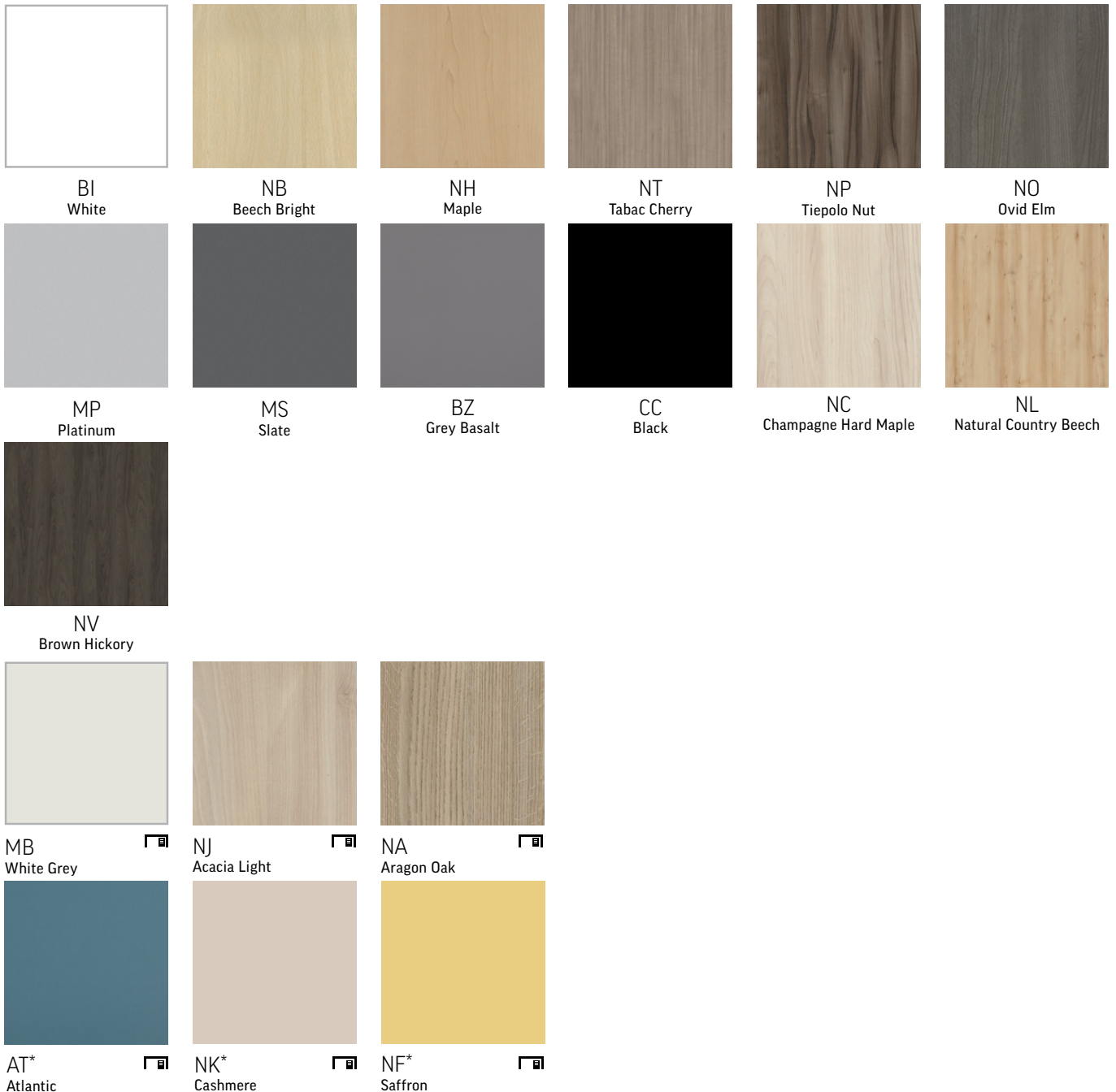
U773
Dusk Grey



U999
Black

Melamine | Melamin | Mèlamine

For furniture and table tops | Für Möbel und Tischplatten | Finitions pour mobilier et plateaux de table

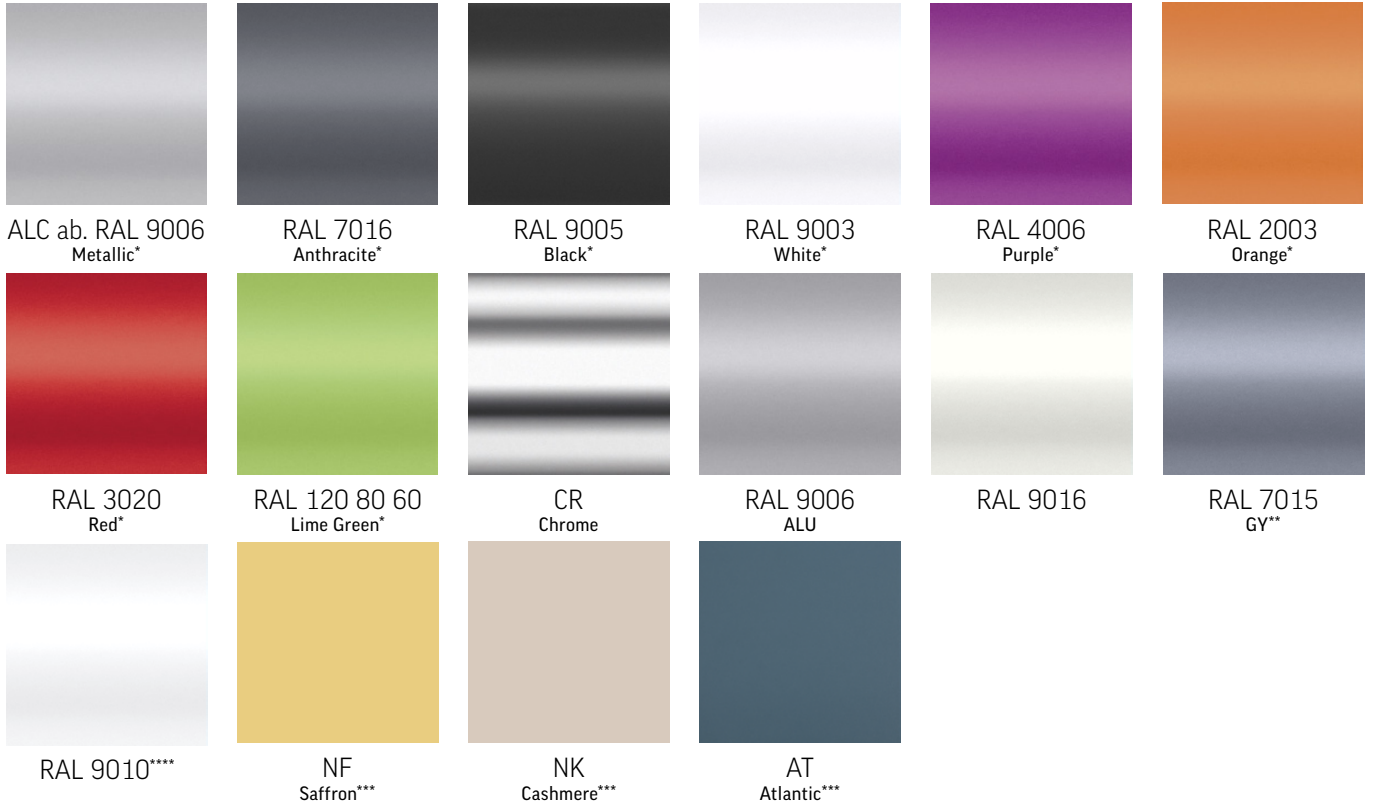


* Melamine available only for 18 mm thick elements (fronts of cabinets/pedestals, all panels for desks and workbenches).

* Melamin ist nur für 18 mm starke Komponenten verfügbar (Fronten von Schränken/Containern, alle Schreibtisch- und Workbenchplatten).

* Mèlamine disponible uniquement pour les éléments d'une épaisseur de 18 mm (façade de rangement/caisson, tous les écrans de séparation pour bureaux et postes Bench).

Metal | Metall | Métal



* Colours available for powder-coated chair frames.

| Gestellfarben verfügbar für Stühle in pulverbeschichteter Ausführung.

| Couleurs disponibles pour les structures en finition peinture poudre époxy.

** Colour available for Easy Space.

| Farbe verfügbar für Easy Space.

| Couleur disponible pour Easy Space.

*** Colour available for Play&Work.

| Farbe verfügbar für Play&Work.

| Couleur disponible pour Play&Work.

**** Colour available for Sand.

| Farbe verfügbar für Sand.

| Couleurs disponibles pour Sand.